

State Board of Education

Transition to the Cohort Graduation Rate

Leslie Wilson, Assistant State Superintendent
Division of Accountability, Assessment, Data Systems

March 22, 2011



Definition :

Four-Year Adjusted Cohort Rate

The number of students who graduate in four years with a regular high school diploma divided by the number of students who form the adjusted cohort for that graduating class.

- Follows a cohort, or a group of students, who begin as first-time ninth graders in a particular school year.
- For high schools that start after grade nine, the cohort is calculated based on the earliest high school grade.

Getting into the Specifics

A “regular high school diploma:”

- A standard high school diploma that is fully aligned with the state’s academic content standards.
- May include a higher diploma.
- Does not include a credential from a GED program, certificate of attendance, or other alternative award.

Getting into the Specifics *(Continued)*

“Students who graduate in four years” means students who earn a regular high school diploma:

- At the conclusion of their fourth year,
- Before the conclusion of their fourth year

Getting into the Specifics *(Continued)*

“Adjusted cohort” means students who enter ninth grade and

- Any students who transfer into the cohort in grades nine through 12,
- Minus any students who transfer, emigrate, or pass away.

Documenting Students Removed From a Cohort

To remove a student from a cohort, a school or local educational agency (LEA) must have evidence in writing that the student:

- Transferred out,
- Emigrated to another country, or
- Is deceased

Example: Four-Year Adjusted Cohort

A four-year adjusted cohort for students entering ninth grade for the first time in 2008-09 would be calculated as follows:

Numerator = Number of cohort members who graduate in four years with a regular high school diploma *divided by*

Denominator = Number of first-time ninth graders in fall 2008 (starting cohort), plus students who transfer into, minus students who are removed from, the cohort during school years 2008-09, 2009-10, 2010-11, and 2011-12

Point of Confusion

- Common misconception: *all* students who are not 4-year graduates are drop outs
- Students classified as non-graduates are:
 - Special education students who complete their IEP program and are awarded a Certificate of Completion
 - Those who do not meet graduation requirements in 4 years and return to complete their program (5 or more years)
 - Drop outs

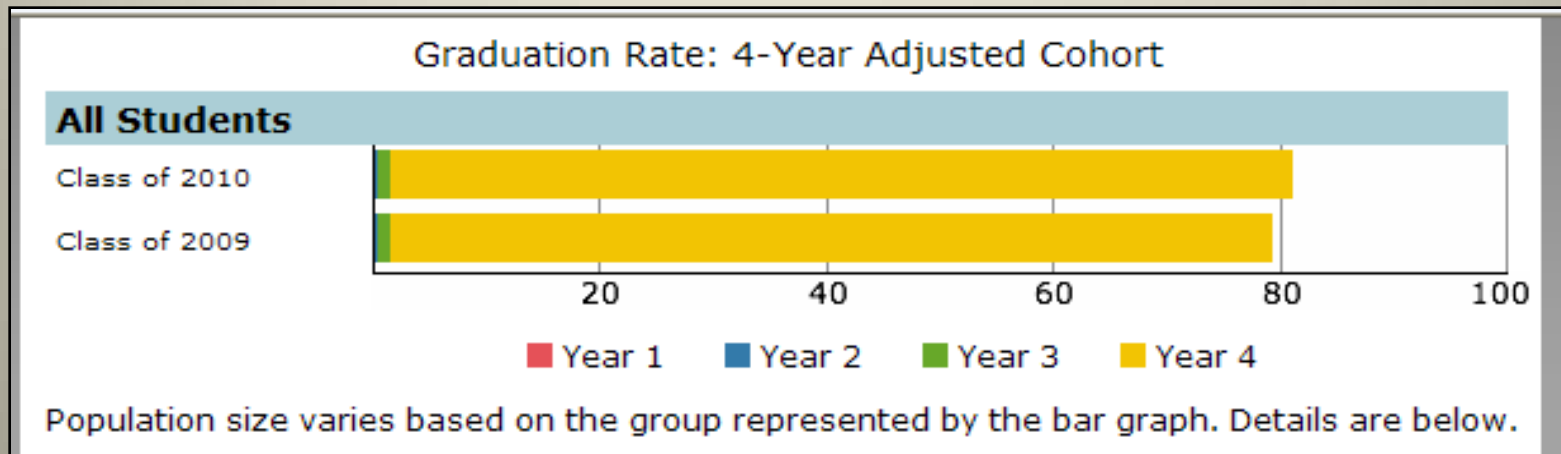
Reporting

- A state must report the four-year graduation rate at the school-, LEA-, and state-levels in the aggregate, and **disaggregated by subgroups**.
- Graduation rate data must be reported for:
 - Racial and ethnic groups,
 - FARMs,
 - Special Education,
 - ELL

Publication of Cohort Rate

- In addition to Leaver rate
- On website October 29, 2010
- New presentation
 - Actual cohort construction
 - Variety of graduation and completion data, hope to add additional data
 - By subgroups

Cohort Graduation Rate Graph



State Cohort as Presented on Website

Graduation Rate: 4-Year Adjusted Cohort

Students who dropout of high school remain in the adjusted cohort—that is, the denominator of the graduation rate calculation.

All Students

▶ Hide Cohort Calculation

Class of 2010 (Entered in 2006)	YEAR 1 ('06-'07)	YEAR 2 ('07-'08)	YEAR 3 ('08-'09)	YEAR 4 ('09-'10)	TOTAL
Percent	0.00	0.02	1.15	79.54	80.71
<u>Diplomas Earned</u> 4-Year Adj Cohort	$\frac{0}{69773}$	$\frac{11}{69575}$	$\frac{800}{69403}$	$\frac{55007}{69156}$	$\frac{55818}{69156}$
4-Year Cohort Calculation					
Starting Cohort	67253	→ 69773	→ 69575	→ 69403	67253
+ Transfers In	+ 5385	+ 4024	+ 3155	+ 1610	+ 14174
- Transfers Out	- 2854	- 4192	- 3303	- 1838	- 12187
- Deaths	- 11	- 30	- 24	- 19	- 84
= Adjusted Cohort	= 69773	= 69575	= 69403	= 69156	= 69156

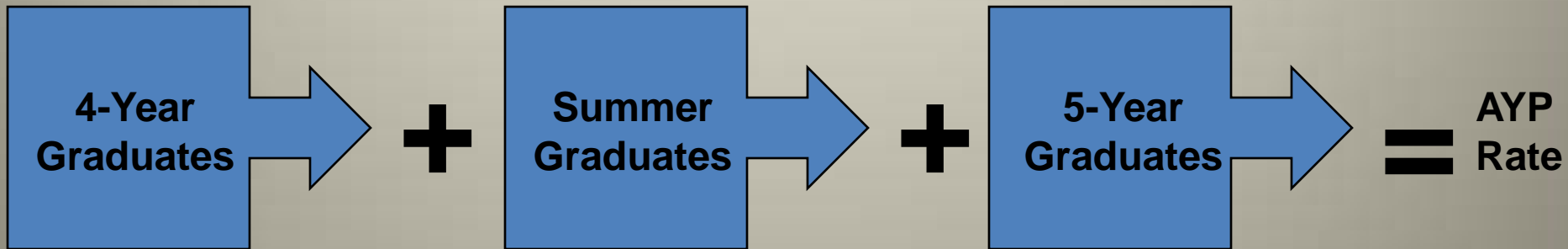
Using the Cohort Graduation Rate in 2011 AYP Determinations

- High school AYP based on cohort grad rate
- Took the best of the ideas of several other states
- Plan is similar to 2010, but uses cohort rate
 - Set standard for the 4-year rate
 - Set standard for the 5-year rate
 - Add growth component

Building the Cohort Graduation Rate: Entering 2006-07

5-Year Rate

On Time 4-Year Rate

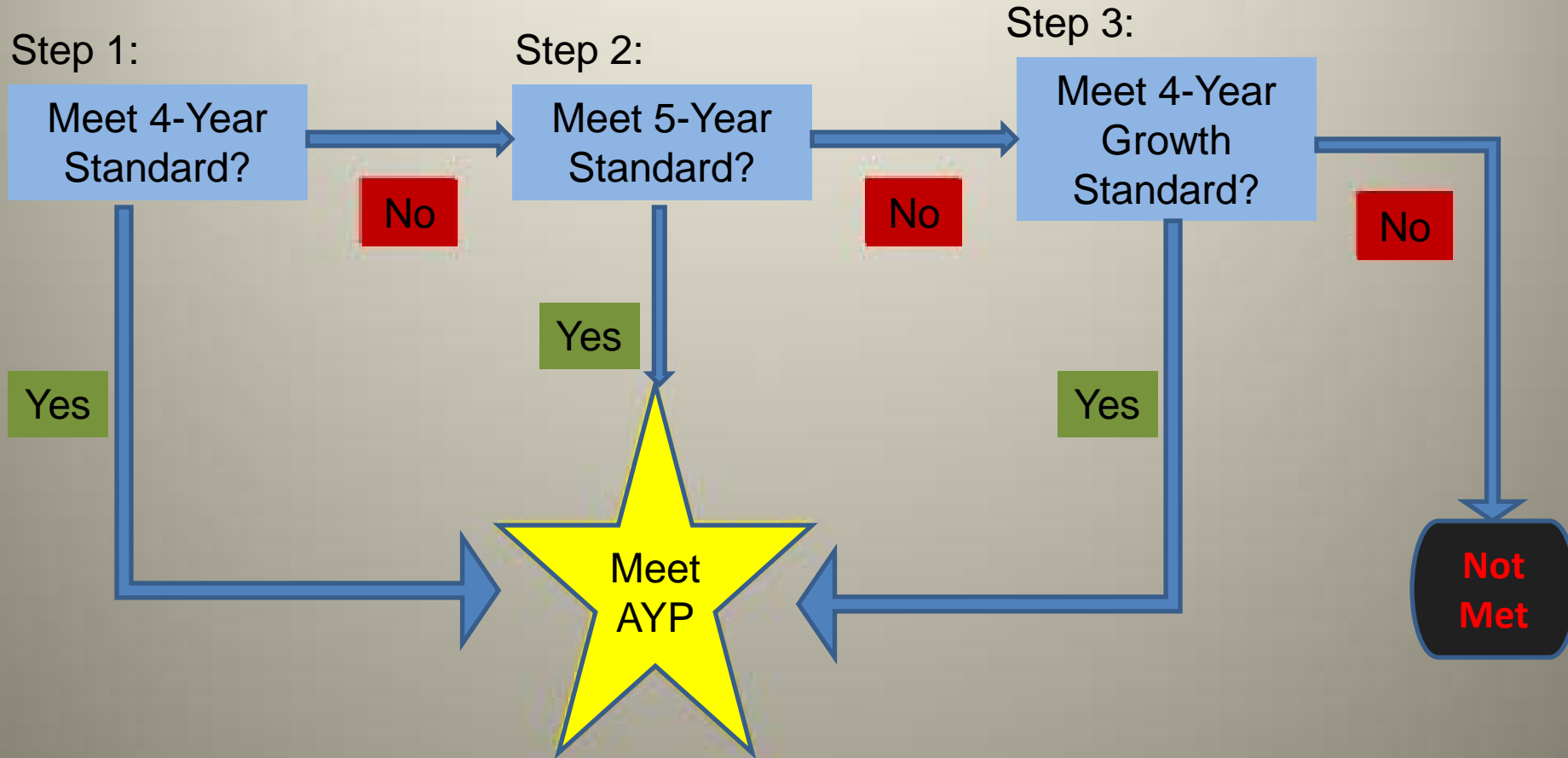


May 2010

September 2010

May 2011

Graduation Rate AYP Determinations



Observations from 2010 Data

- State cohort rate is 80.66, about 6 points below the leaver rate.
- All but one LEA have a lower cohort than leaver rate
- Hispanic, FARMS, Special Education and ELL students also have lower cohort than leaver rates (more students tend to take longer than 4 years to graduate)

2009 and 2010 Cohort Graduation Rate Data by Subgroup

	2009 Cohort		2010 Cohort
	<i>4-Year Rate</i>	<i>5-Year Rate</i>	<i>4 Year Rate</i>
All Students	80.31	82.98	80.66
American Indian	71.08	71.83	73.95
Asian	91.01	93.14	92.52
African American	72.36	76.18	72.52
White	87.28	88.73	87.64
Hispanic	68.74	73.78	69.71
Special Education	52.83	59.49	53.06
FARMs	72.72	77.76	71.68
ELL	54.88	69.74	53.91

New Race Codes for 2011

Current Race Codes

- American Indian/Alaskan
- Asian
- African American
- White
- Hispanic

New Race Codes

- Hispanic/Latino
- American Indian/Alaskan
- Asian
- African American
- Native Hawaiian/Pacific Islander
- White
- Two or more races

Coming Attractions for 2012 AYP

- All high schools will be held accountable for all subgroups (including new race codes) meeting the AMO for graduation rate
- Maryland will study the approaches of other states
- Reset standards based on subgroup data

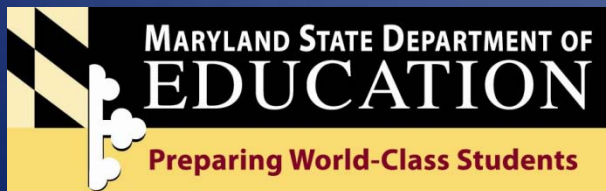


QUESTIONS AND DISCUSSION

State Board of Education

Graduation and Drop out Rate Standard Setting

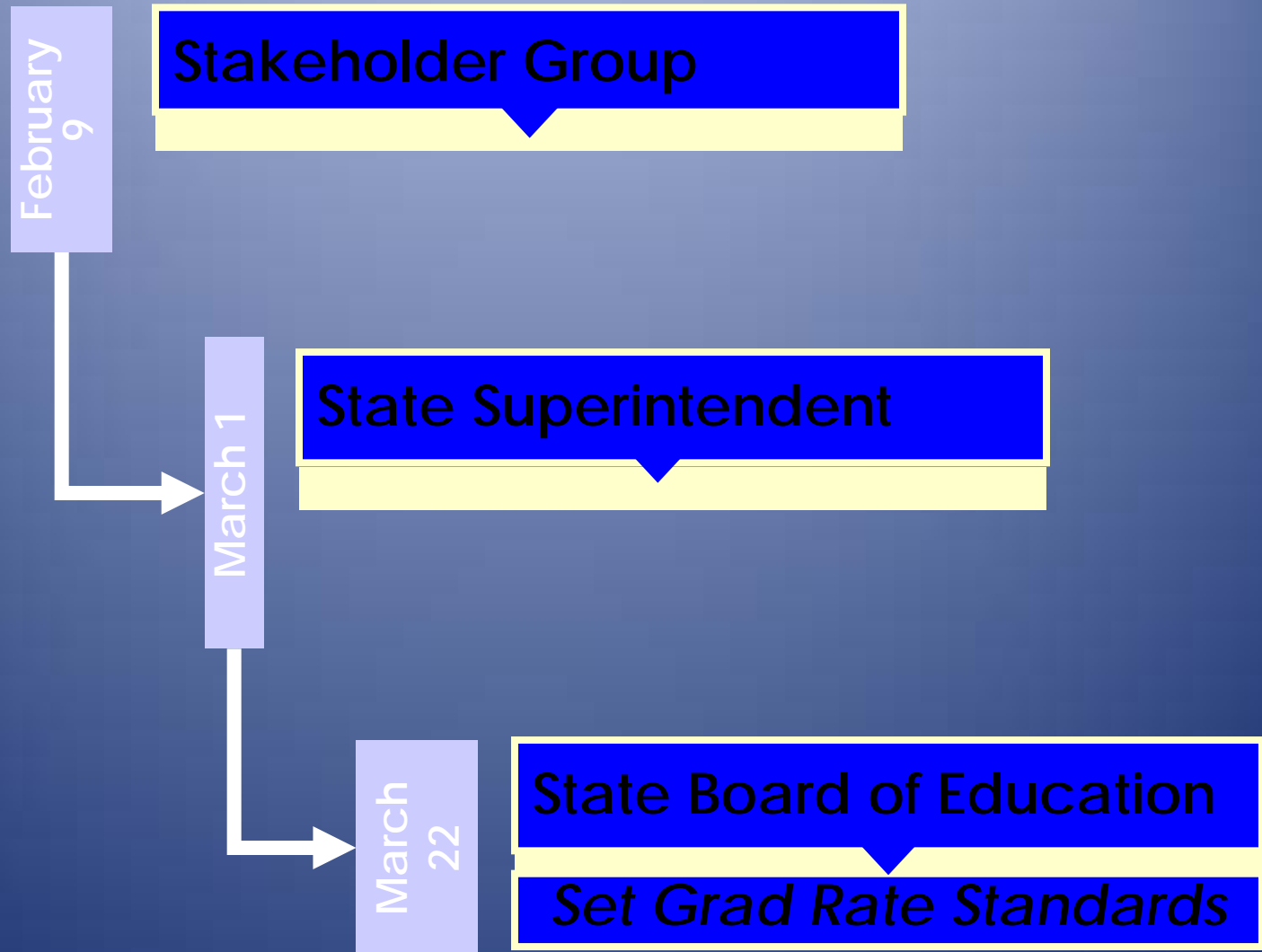
Leslie Wilson, Assistant Superintendent
Division of Accountability, Assessment, Data Systems
March 22, 2011



New Standard

- Must:
 - implement new cohort calculation for accountability in 2011
 - set new “all student group” standards
 - 4 and 5 year graduation rates
- Is based on 2009 cohort data
 - Have data for 4 and 5 year grads
- Includes goal for 2020 as well as calculated target for 2014 based on capacity to improve
- Determines AMOs from data

Standard-Setting Work Flow



Stakeholder Group

- Local Superintendent
- Local Assistant Superintendents
- Local Accountability Coordinators
- High School Principals
- High School Guidance Counselors
- Teachers
- Teachers Union Representatives
- Business Representatives (MBRT and others)
- Special Needs Advocates: ELL, Special Education

Process

- Context
- Overview of changes and new calculations
- Federal requirements for “rigorous” goal
- Discussion: Where does MD want to be in 2020?
- Impact data
- Consensus recommendation to State Superintendent

Grad Rate Standard Recommendation From State Superintendent

- Concern that 100% college and career ready is unattainable because severely cognitively disabled students do not receive diplomas.

Recommended goal for 2020:

100% college/career ready plus *completers* to include:

- GED
- Special Education Certificates

Grad Rate Standard Recommendation From State Superintendent

Standards to be reached by 2020:

4 year graduation rate: 95%

5 year graduation rate: 97%

Grad Rate Standard Recommendation From State Superintendent

Standards to be reached in 2011:

4 year graduation rate: 81.5%

5 year graduation rate: 84.4%

Impact Data: Percentage of LEAs and Schools Meeting Target

	LEAs	Schools
4-Year Rate		
Met	15	125
Total	24	282
Percentage	62.50	44.33
5-Year Rate		
Met	16	126
Total	24	290
Percentage	66.67	43.45

Next Steps for Grad Rate Standards

Spring

Submit standards to USDE for approval

Summer

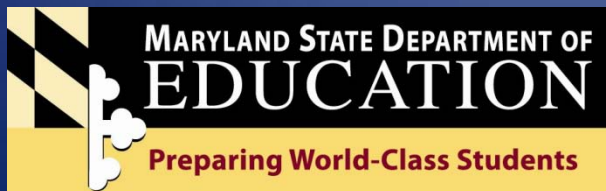
- Implement standard, double check the data for accuracy at school and system level
- Calculate 2011 AYP
- AYP results added to website

Fall

- Set standards for subgroups for 2012 AYP

Board Action

2011 Cohort Graduation Rate Standards



State Board of Education

Transition to the Cohort Drop Out Rate Rate

Leslie Wilson, Assistant State Superintendent
Division of Accountability, Assessment, Data Systems

March 22, 2011



Difference Between Current and Cohort Drop Out Rates

Annual Event Rate

- Does not require an LDS (1 year of data)
- Reflects all drop outs across grades 9-12 in a given school year
- Reports every “event” of drop out: students can be counted twice
- A drop out can also count as a graduate

Adjusted Cohort Rate

- Requires an LDS (4 years of data)
- Reflects cumulative drop outs across a 4 and 5 –year period from a cohort group entering Grade 9 at the same time
- Students are only counted once (final status)

Annual Event Drop Out Rate Calculation (example)

	Grade 9 (2010)	Grade 10 (2010)	Grade 11 (2010)	Grade 12 (2010)	Total (2010)
Drop Outs (Numerator)	2,000	2,000	1,700	1,400	7,100
Total Students (Denominator)	80,000	72,000	65,000	66,000	283,000
Approximate Rate					2.5%

Adjusted Cohort Drop Out Rate Calculation (example)

	Grade 9 (2007)	Grade 10 (2008)	Grade 11 (2009)	Grade 12 (2010)	Total
Drop Outs (Numerator)	2,000	2,000	1,700	1,400	7,100
Total Cohort (Denominator)	70,000	70,000	69,000	69,000	69,000
Approximate Rate					10.3%

Other New Features

- Cohort drop out rate will include *as drop outs*
 - Students who do not continue from the end of one school year to the beginning of the next (cross summer)
 - Any student classified as a transfer who cannot be verified as enrolled somewhere else
 - Non-graduates at the end of Year 4 who do not re-enroll in Year 5.

Cohort Drop Out Rates by Subgroup

	2009 Cohort	2010 Cohort
	(four years, including summer in Year 5)	(four years)
All Students	13.78	8.29
American Indian	22.09	12.61
Asian	5.37	2.17
African American	18.84	10.54
White	9.62	6.54
Hispanic	20.34	12.11
Special Education	23.72	15.47
FARMs	15.11	9.05
ELL	22.56	16.81



QUESTIONS AND DISCUSSION

Why a New Drop Out Standard?

- Based on new cohort calculation
- Totally new metric – emphasize change in “norm”
- Drop out is used as the “other indicator” for AYP determinations for schools without graduates

Process

- Same as for cohort graduation rate
- Same stakeholder group
- Same schedule/day

Key Points

- Cohort rates:
 - Allow us to categorize every student – eventually (add to 100%)
 - Provide more complete information about non-graduates
- Group chose to set standard on data beyond May of Year 4 to include what happens *after* spring graduation (some return and ultimately graduate, some do not - they “drop out”)

Drop Out Rate Standard Recommendation From State Superintendent

Standard to be reached by 2020: 1%

Standard to be reached in 2011: 13%

Impact Data: Percentage of LEAs and Schools Meeting Target *(Target is not used for accountability)*

	LEAs	Schools
Drop Out Rate		
Met	15	144
Total	24	282
Percentage	62.50	51.06

Board Action

2011 Cohort Drop Out Rate Standard

