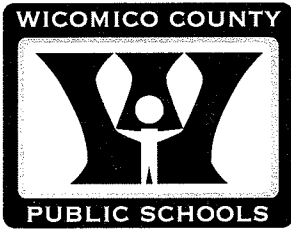


BOARD OF EDUCATION OF WICOMICO COUNTY



John E. Fredericksen, Ph.D.
Superintendent of Schools

101 Long Avenue
P.O. Box 1538
Salisbury, MD 21802-1538

410-677-4400
FAX 410-677-4444
www.wcboe.org

SUCCESS - Every Student, Every Day

Ronald O. Willey
President
Tyrone A. Chase, Ph.D.
Vice President
Marvin L. J. Blye
Larry W. Dodd
Carolyn J. Elmore, Ed.D.
Donald L. Fitzgerald
L. Michelle Wright

May 9, 2012

Mr. Anthony South, Executive Director
Maryland State Department of Education
200 West Baltimore Street
Baltimore, Maryland 21201

RE: MOE Waiver Request: Wicomico County

Dear Mr. South:

As indicated in our letter to you dated April 23, 2012, the Wicomico County Board of Education (WCBOE) has been advised by legal counsel that the current waiver request submitted by our County Executive is inconsistent with current state law, and consequently, the Board cannot support the waiver request. However, in order to comply with your request of April 27, 2012 to respond to the question "what would be the practical/concrete consequence of the reduction of funds to the public school system", we have provided below a narrative along with various charts and graphs to disclose the negative impact on our school system if the State Board grants the waiver request to Wicomico County.

Current state law as reflected in the recently passed emergency legislation (SB848) indicates that Wicomico County must fund the WCBOE \$50.4 million in order to comply with the State's MOE requirement for FY 2013. Unfortunately, the current waiver request as submitted by the County Executive intends to ask the State Board to rebase the FY 2013 MOE requirement to \$36.3 million, a reduction of \$14.1 million from current law. The significant potential impact of the waiver request provides us with the opportunity to recap for the State Board the effect on the students of Wicomico County from the significant cuts WCBOE has already endured over the past two fiscal years.

Over the past two years, local county funding for education has been reduced by 28.7%. **Chart A** discloses the large reductions of \$14.6 million in local county funding over the past two years and clearly indicates how the FY 2012 funding amount is on par with Wicomico County funding in FY 1999. **Chart B** reflects how education funding has dropped significantly as a % of the total county operating budget. As state funds were provided for education (Thornton funding), our county did not keep pace with its share of education funding. In fact, **Chart C** shows how our county government has performed in terms of meeting MOE over the years. It discloses how during the Thornton years, the MOE level was practically all that was funded. Conversely, prior to Thornton, MOE was regularly exceeded by significant amounts. Also, this chart discloses that our County has requested and received

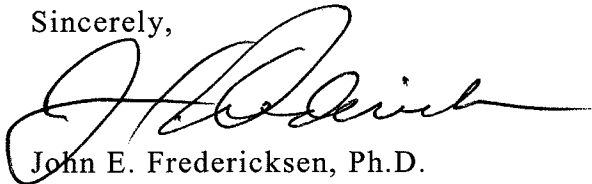
Mr. Anthony South
May 9, 2012
Page 2

a waiver from the State Board three previous times. **Charts D and E** reflect how Wicomico County's contribution toward education has decreased in total and as a % of total education funding during the Thornton years and especially over the past two fiscal years. **Chart F** reveals that over the past six years, Wicomico County has reduced its contribution to education in comparison to the other Eastern Shore Counties. Finally, **Chart G** indicates the significant drop in the county appropriation per pupil (decreased by \$1,007 per pupil) from FY 2010 to FY 2012, which now ranks Wicomico in 23rd place. As a direct consequence of the loss of \$14.6 million in county funding, WCBOE has made significant reductions in personnel and programs that have had a negative impact on instruction. **Charts H and I** reveal the specific cuts to personnel and programs which WCBOE has been forced to make.

While it is the desire of the Wicomico County Board of Education to cooperate with our County Executive and County Council in ensuring that the students of Wicomico County receive a quality education, we cannot support the waiver request as currently submitted to the State Board of Education. We will, however, continue to work with the County Executive and County Council, as we did in FY 2010, to ensure that adequate funding is provided for the education of students in Wicomico County.

If after reviewing this information you should have any questions, please do not hesitate to contact me.
Thank you.

Sincerely,

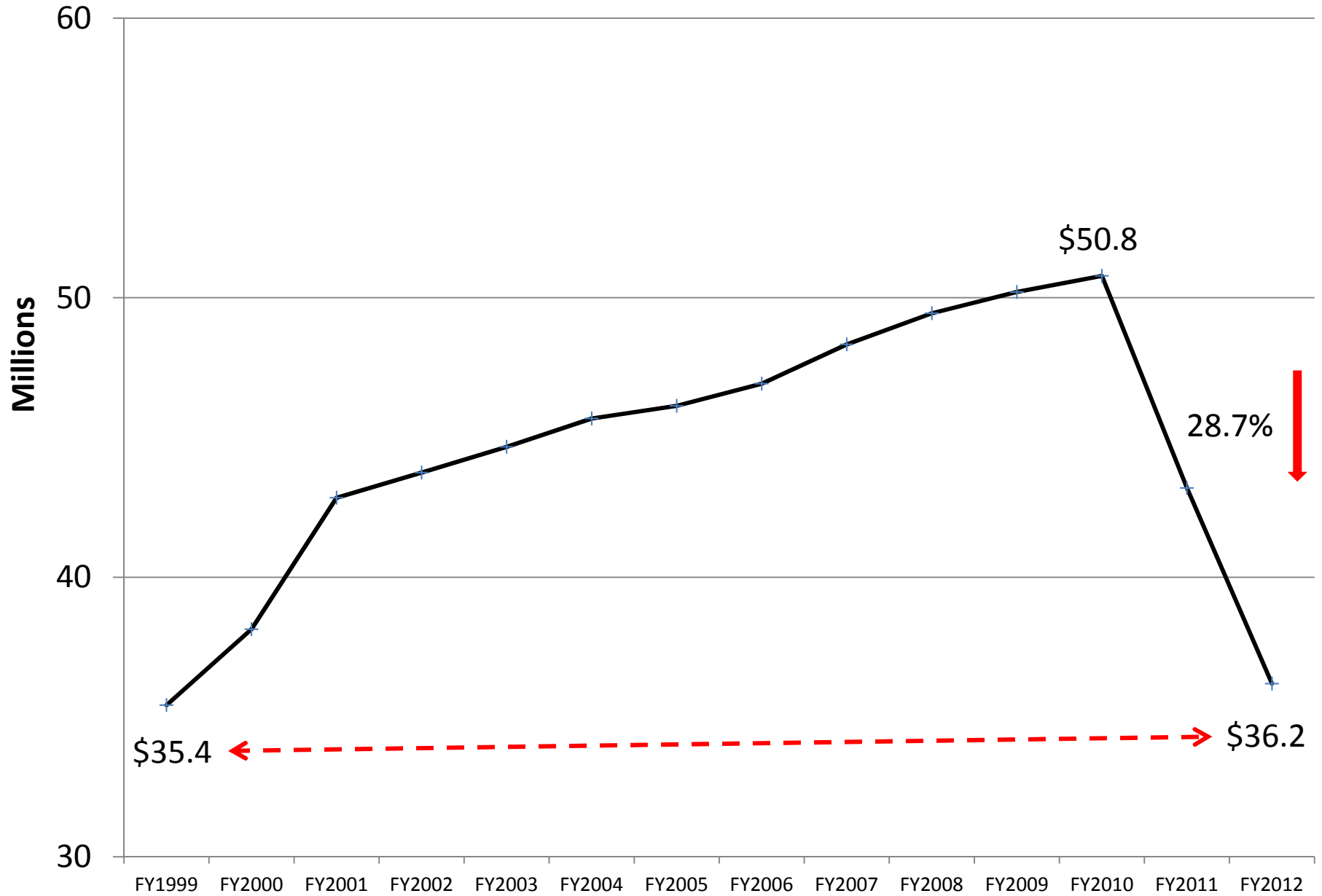


John E. Fredericksen, Ph.D.
Superintendent of Schools

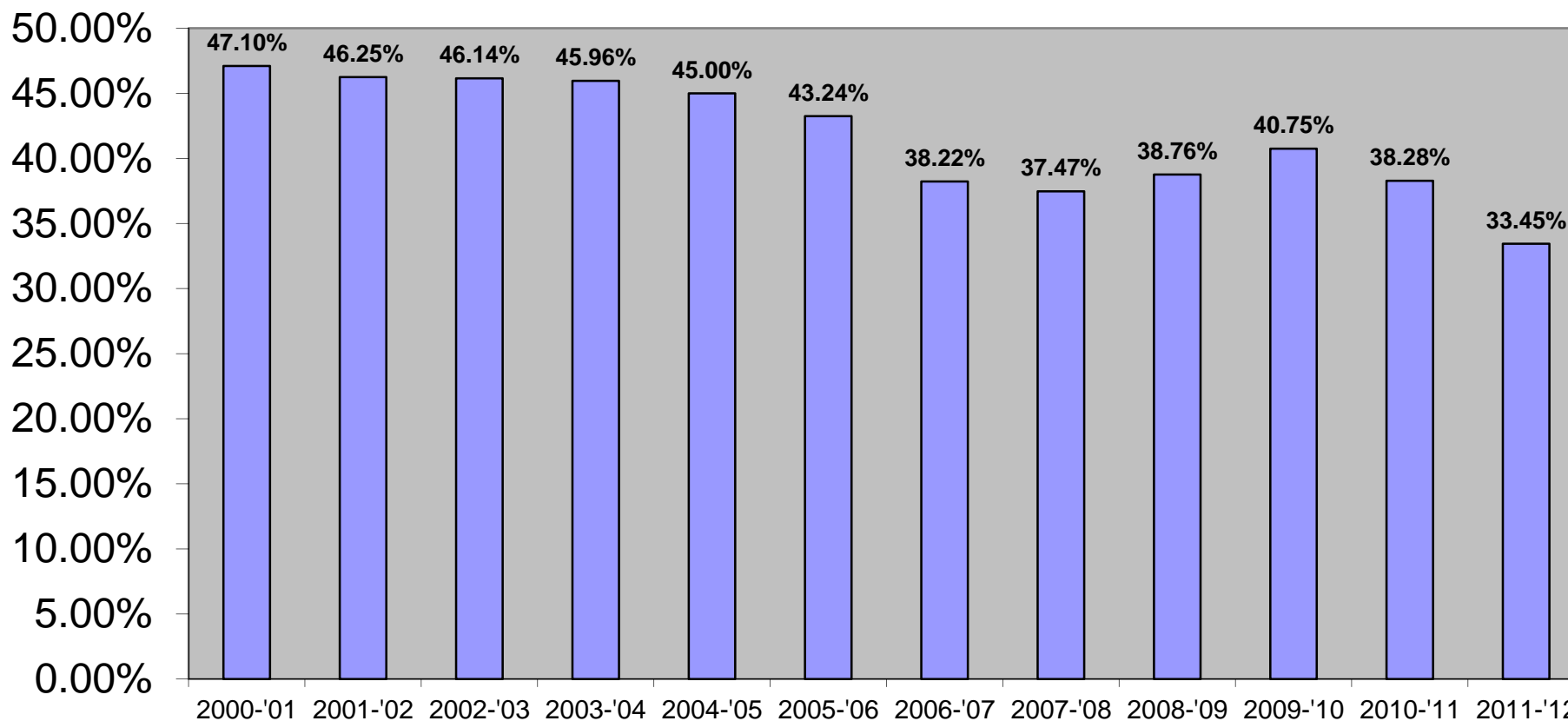
Cc: Wicomico County Council
Wicomico County Executive
Wicomico County Board of Education
Wicomico County Education Association
Wicomico County Association of Public School Administrators

Wicomico County Appropriation for Education

Chart A



EDUCATION APPROPRIATION for WCPS General Operating Budget AS % OF WICOMICO COUNTY BUDGET



Wicomico County Public Schools - Amount Above (below) MOE

Chart C

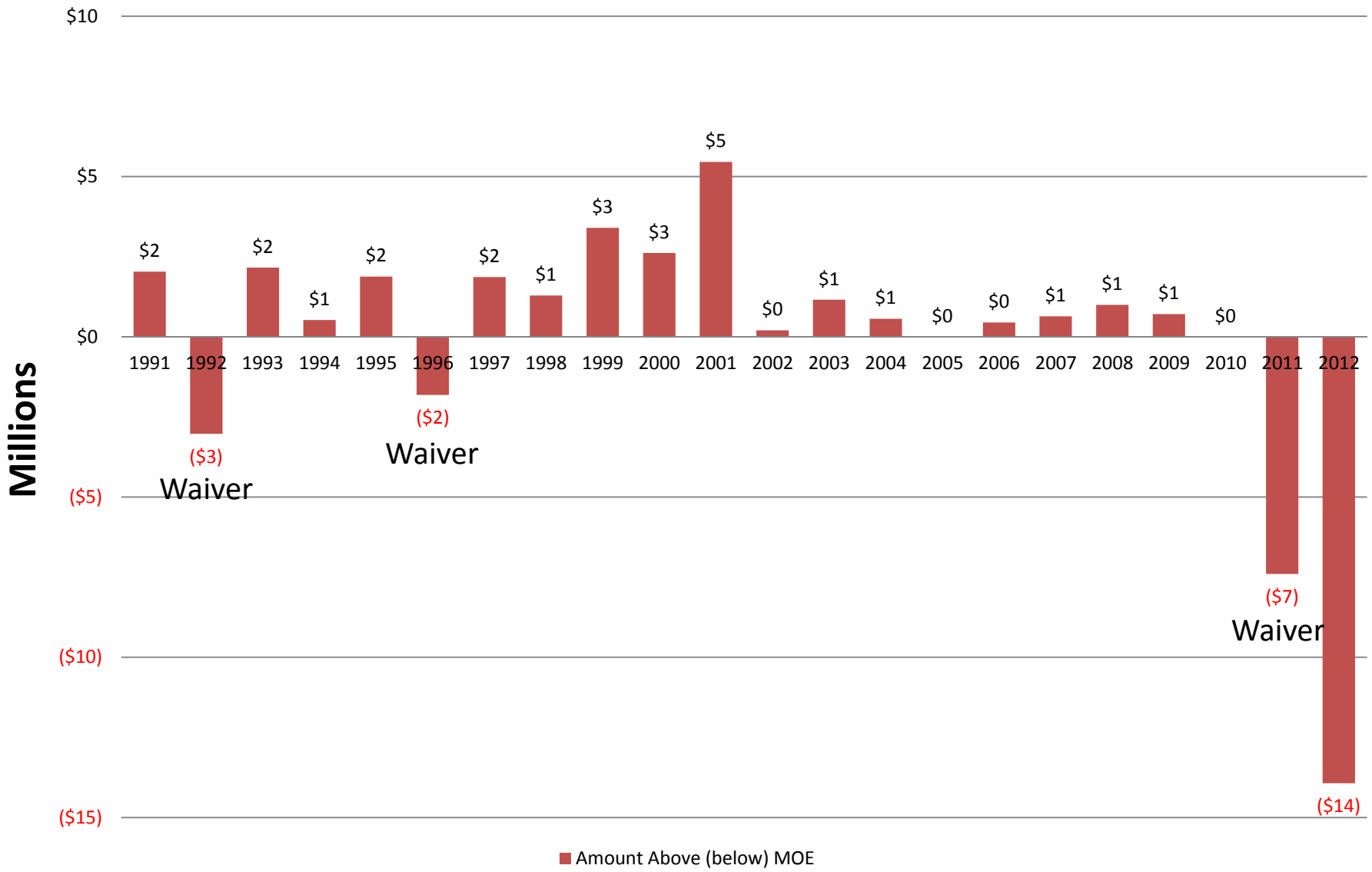
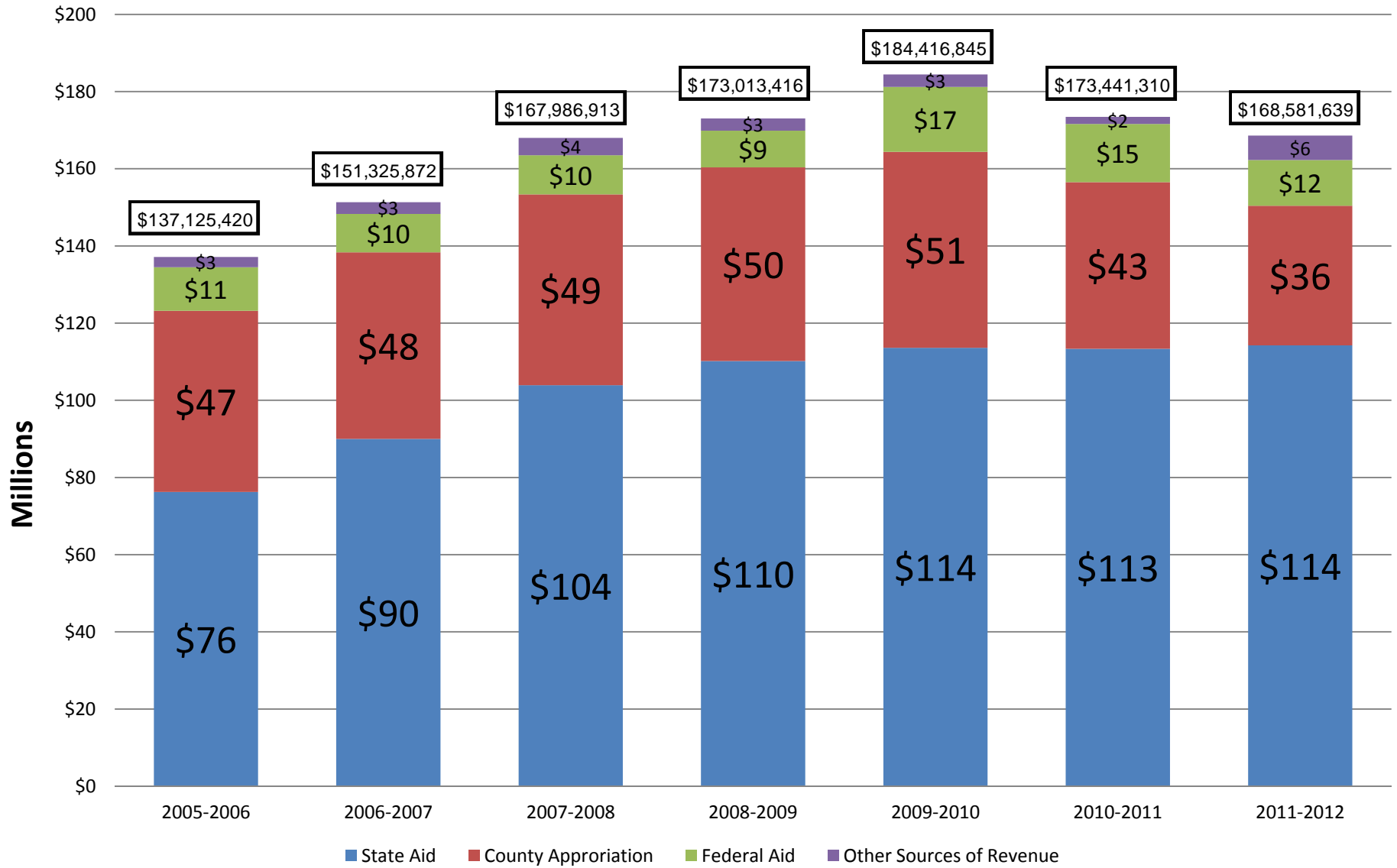


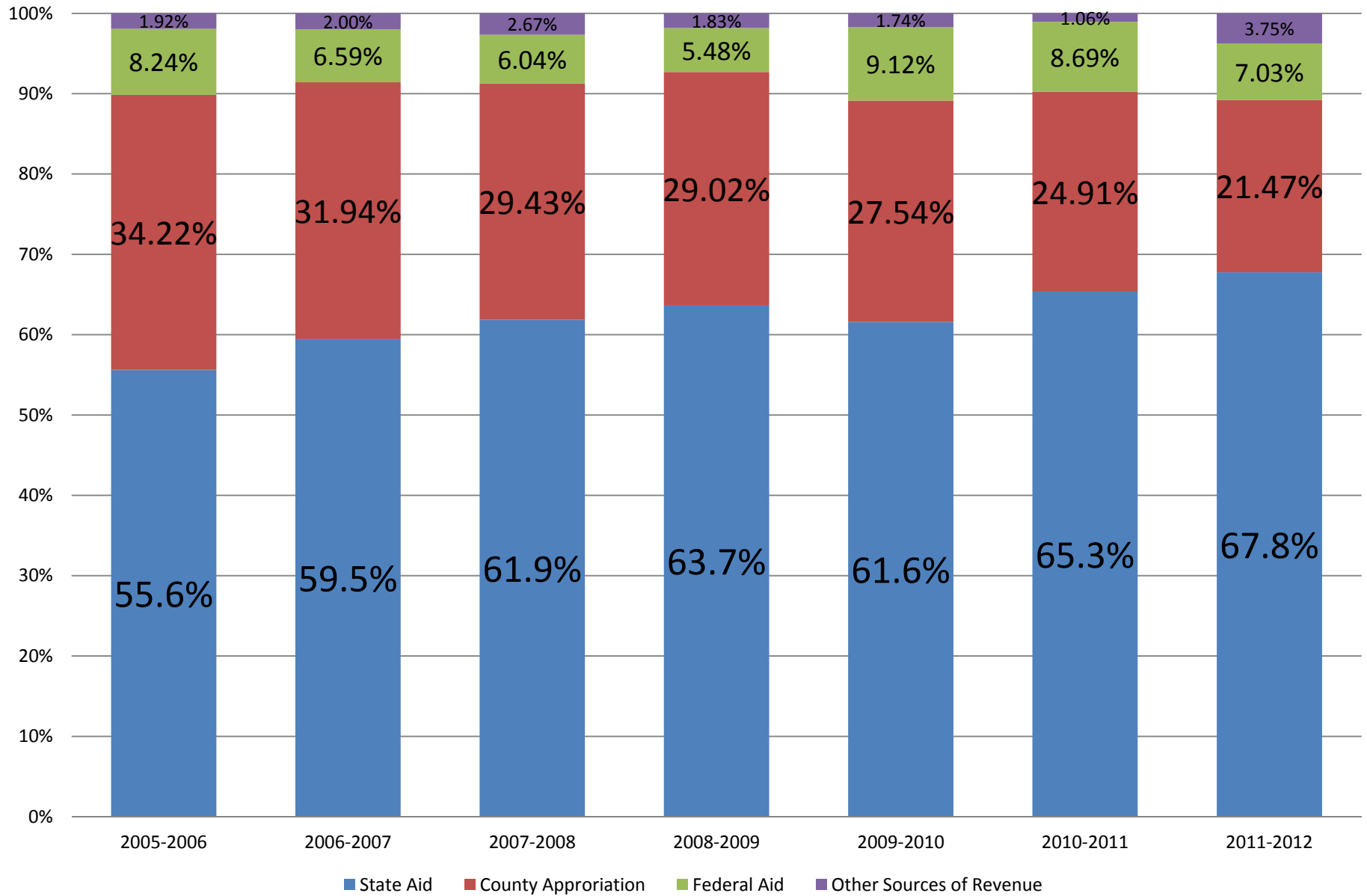
Chart D

Wicomico County Public Schools Consolidated Current Expense Budget



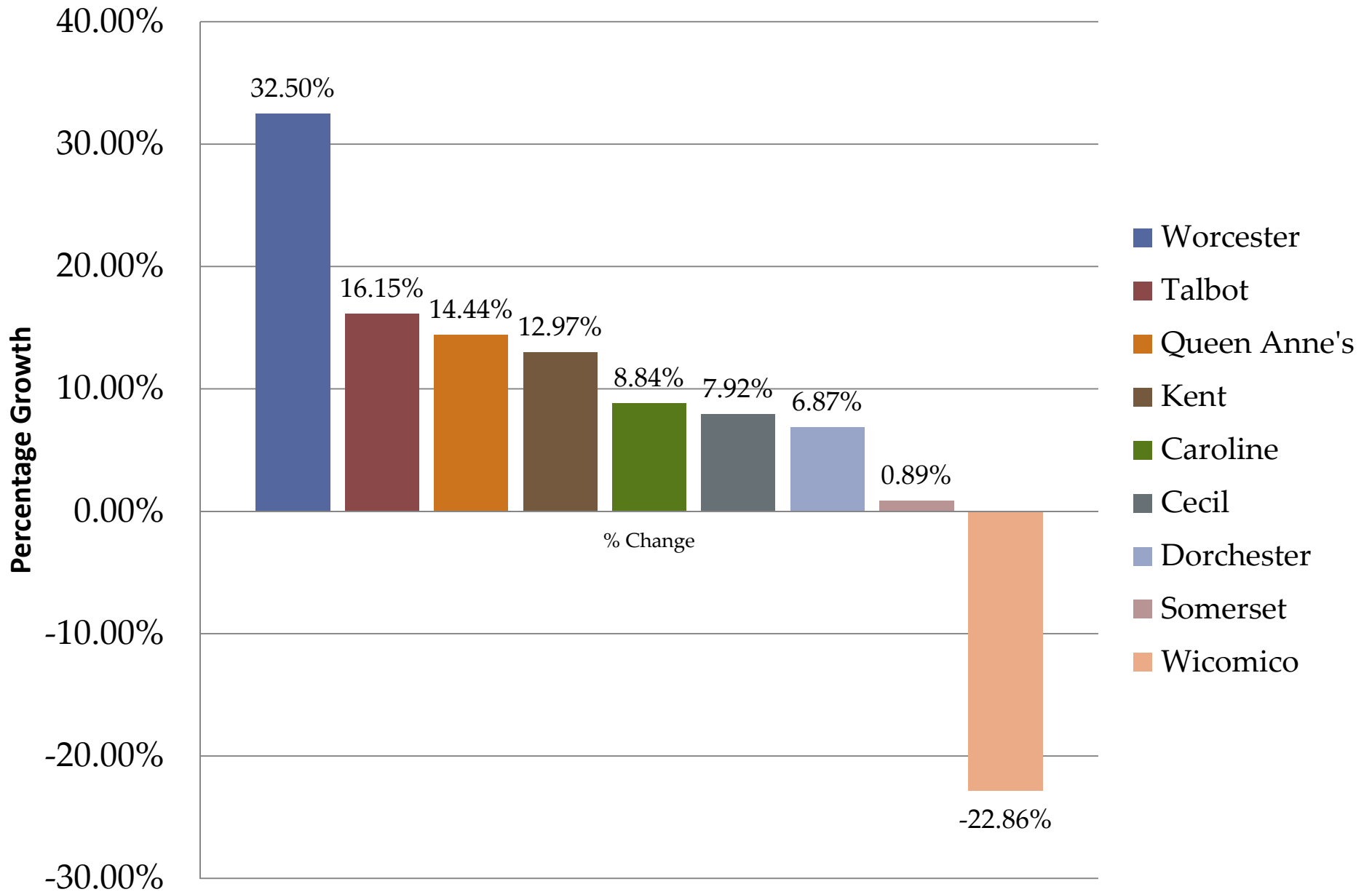
Wicomico County Public Schools Consolidated Current Expense Budget

Chart E



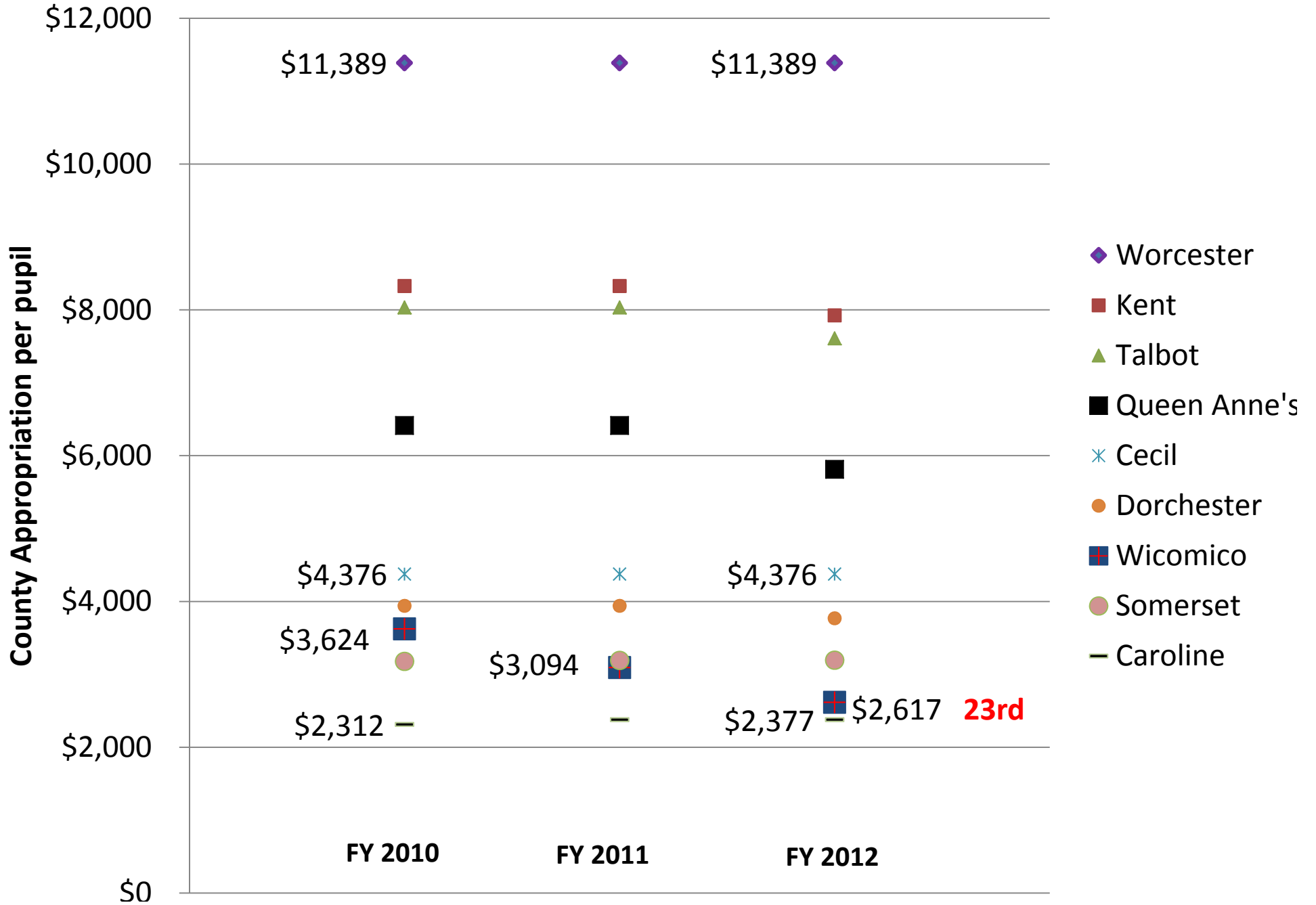
Growth in County Appropriation for Education (Percent Growth from FY 2006 to FY 2012)

Chart F



County Appropriation per Pupil

Chart G





Board actions already taken due to budget cuts

FY 2011

- cut 32 FTE staff positions
- eliminated the following programs:
 - Adult Education
 - Beyond the Limits
 - Delmar Year-Round Education
- deferred systemic renovations
- cut textbooks
- reduced technology expenditures
- cut bus routes
- no salary increases

FY 2012

- cut 15 FTE staff positions
- eliminated the following programs:
 - Pemberton Park Naturalist
 - Student Agenda funding
 - Values Calendar
- cut employee benefits
- deferred systemic renovations
- cut textbooks
- reduced technology expenditures
- cut bus routes by changing start/end times
- no salary increases

Results of losing \$14.6 million in county funding

**WICOMICO COUNTY BOARD OF EDUCATION
APPROVED UNRESTRICTED CURRENT EXPENSE
FISCAL YEARS 2011 and 2012
Summary of Personnel Cuts**

Teacher Positions

Computer Instruction	2.00
Elementary Education	7.00
Computer Instruction	1.00
Social Studies	1.00
At-Risk Instruction	1.00
New Teacher Mentor	1.00
Instructional Resource Center	1.00
Professional Development Coach - Math	3.00
Professional Development Coach - Reading	4.00
Beyond the Limits Program	2.00
Adult Education	4.00
Special Ed Teacher	1.00
Total Teaching Positions	28.00

Administrative Positions

Title I Supervisor, Coordinator of Instructive Technology, Coordinator of Staff Development)	3.00
Coordinator of Public Relations	1.00
Director of Family Services	1.00
Total Administrative Positions	5.00

Support Services Positions

Office Associates	2.00
Social Worker	1.00
Student Mentoring clerical	1.00
School Nurses	2.00
Bus Assistants	2.00
Office Associate II	1.00
Administrative Assistant	1.00
Administrative Assistant	1.00
Project Manager	1.00
Speech Pathologist	1.00
Special Ed Assistant	1.00
Total Support Services Positions	14.00

TOTAL APPROVED POSITION REDUCTIONS 47.00