

# Maryland Special Education/Early Intervention Services Census Data & Related Tables

December 1, 2001



Maryland State Department of Education  
Division of Planning, Results, and Information Management  
200 West Baltimore Street  
Baltimore, MD 21201-2595  
(410) 767-0031

MSDE-PRIM 04100(R)003 3/02

# MARYLAND STATE BOARD OF EDUCATION

**Marilyn D. Maultsby**  
*President*

**Reginald L. Dunn**  
*Vice President*

**Jo Ann T. Bell**

**Philip S. Benzil**

**Dunbar Brooks**

**Clarence A. Hawkins**

**Walter S. Levin**

**Karabelle Pizzigati**

**Edward L. Root**

**Walter Sondheim, Jr.**

**John L. Wisthoff**

**Lauren McAlee** (*Student Member*)

**Nancy S. Grasmick**

*Secretary-Treasurer of the Board*

*State Superintendent of Schools*

**A. Skipp Sanders**

*Deputy State Superintendent for Administration*

**Richard J. Steinke**

*Deputy State Superintendent for School Improvement*

**Mark Moody**

*Assistant State Superintendent*

*Division of Planning, Results, and Information Management*

The Maryland State Department of Education does not discriminate on the basis of race, color, sex, age, national origin, religion, or disability in matters affecting employment or in providing access to programs. For inquiries related to departmental policy, please contact the Equity Assurance and Compliance Branch, Maryland State Department of Education, 200 West Baltimore Street, Baltimore, MD 21201, (410) 767-0433 - Voice, (410) 333-6442 - TTY/TDD, (410) 333-2226 - Fax.

## Introduction

Annually, on December 1, the Maryland State Department of Education (MSDE) collects information on students with disabilities (ages 3-21) who reside in the State of Maryland. In order to be included in this count, the child must be identified as having a disability and receiving active special education services on December 1.

The Special Services Information System (SSIS) consists of two separate data collections. The first is the December 1 Census, a count of all students receiving special education services on December 1 of every year. Data on students who have exited special education are collected on June 30 of every year.

The SSIS database is used to compile information on Maryland students with disabilities. MSDE uses the SSIS database as:

- a source of information to meet its planning, monitoring, and accounting responsibilities for special education;
- a recording and reporting tool for decisions made by the Individualized Education Program (IEP) Team; and
- an instrument for federal reporting requirements.\*

### Definitions

#### Least Restrictive Environments

**Outside the General Ed Classroom < 21%** - students with disabilities enrolled in a comprehensive school who receive special education and related services *outside the general education classroom* for less than 21% of the school day.

**Outside the General Ed Classroom 21-60%** - students with disabilities enrolled in a comprehensive school who receive special education and related services *outside the general education classroom* for at least 21%, but no more than 60% of the school day.

**Outside the General Ed Classroom > 60%** - students with disabilities enrolled in a comprehensive school who receive special education and related services *outside the general education classroom* for more than 60% of the school day.

**Homebound Placement** - students with disabilities who receive more than 50% of instruction homebound.

**Hospital Placement** - students with disabilities who receive more than 50% of instruction in a hospital setting.

**Public Separate Day School** - students with disabilities who spend more than 50% of the school day in separate public facilities as day students.

**Private Separate Day School** - students with disabilities who spend more than 50% of the school day in separate private facilities as day students.

**Public Residential Facility** - public residential placement for students with disabilities.

**Private Residential Facility or Center** - private residential placement for students with disabilities.

#### Additional Preschool Least Restrictive Environments

**Home** - preschoolers with disabilities for whom it is appropriate to receive services at home, not single service.

**Itinerant Setting** - preschoolers with disabilities who receive only speech and/or language at a school or another location.

**Reverse Mainstreaming** - preschoolers with disabilities who receive special education in a class designed for students with disabilities where over 50% of the students are not disabled.

**Early Childhood Setting** – preschoolers with disabilities who receive all of their special education and related services in educational programs designed primarily for children without disabilities.

**Early Childhood Setting** – preschoolers with disabilities who receive all of their special education and related services in educational programs designed primarily for children with disabilities.

**Early Childhood Special Education Setting** – preschoolers with disabilities who receive all of their special education and related services in educational programs designed primarily for children with disabilities housed in regular school buildings or other community based settings.

**Part-Time Early Childhood Part-Time Early Childhood Special Education** – preschoolers who receive services in multiple settings.

**New Tables in this Publication:**

**Page 5 – Trend in High Growth Disabilities**

**Page 15 – Students with Disabilities Compared with General Education  
Students by Race**

**Page 23 – Students with Disabilities Served in Home/Hospital**

**Page 24 – Trend by LRE**

**Page 26 – Students with Disabilities by ESY**

**Page 27 – Students with Disabilities in Parent Placed Private Schools**

**Page 28 – IEPs Older than 13 Months/Evaluations Older than 3 Years**

**Page 30– Students with Disabilities Exit Data**

**Page 34 – Students with Disabilities Suspension Data**

**Page 37 – Infants & Toddlers Data\***

**\*For more information on the Maryland Infants & Toddlers Program see  
[www.msde.state.md.us](http://www.msde.state.md.us)**

**Maryland Special Education  
Census Data & Related Tables  
December 1, 2001**

**Table of Contents**

**Introduction**

**Definitions**

**Table**

**Page**

1	Students with Disabilities by Disability .....	1
2	Students with Disabilities as Percent of September Enrollment .....	4
3	Students with Disabilities Trend in High Growth Disabilities .....	5
4	Students with Disabilities by Age .....	7
5	Students with Disabilities by Age and Disability .....	8
6	Students with Disabilities by Grade .....	9
7	Students with Disabilities by Grade and Disability .....	11
8	Students with Disabilities by Gender .....	13
9	Students with Disabilities by Race .....	14
10	Students with Disabilities Compared with General Education Students by Race .....	15
11	Students with Disabilities by Race and Disability .....	17
12	Students with Disabilities by Least Restrictive Environment .....	18
13	Students with Disabilities Served in Home/Hospital .....	23
13	Students with Disabilities Trend by LRE .....	24
14	Students with Disabilities by Race and LRE .....	25
15	Students with Disabilities by ESY Service .....	26
16	Students with Disabilities Placed by Their Parents in Private Schools .....	27
17	Students with Disabilities by IEPs Older Than 13 Months and Evaluations Older Than 3 Years .....	28
18	Students with Disabilities by Exit Reason and LEA .....	30
19	Students with Disabilities by Exit Reason and Disability .....	32
20	Students with Disabilities by Extended Suspensions .....	34
21	Students with Disabilities by Multiple Suspension .....	35
20	Maryland Part C Child Report .....	37
21	Part C Transition Report .....	39

**Figures**

1	Students with Disabilities by Disability .....	3
2	Students with Disabilities Trend in High Growth Disabilities.....	6
3	Students with Disabilities by LRE .....	19
4	Preschool Students with Disabilities by LRE .....	21
5	Students with Disabilities Trend by LRE Setting .....	22
6	Students with Disabilities by Exit Reason .....	31
7	Part C Eligibility for 12/1/01.....	38

Table 1

Students with Disabilities by Disability  
December 1, 2001

-1-

	Total Special Education	Mental Retardation		Hearing Impaired		Deaf		Speech/ Language		Visually Impaired		Emotion- ally Disturbed		Orthope- dically Impaired	
		Total	Percent	Total	Percent	Total	Percent	Total	Percent	Total	Percent	Total	Percent	Total	Percent
Total State	112,426	6,951	6.18%	703	0.63%	722	0.64%	29,820	26.52%	585	0.52%	9,301	8.27%	565	0.50%
Allegany	1,892	131	6.92%	1	0.05%	5	0.26%	454	24.00%	2	0.11%	81	4.28%	2	0.11%
Anne Arundel	10,448	456	4.36%	58	0.56%	6	0.06%	2,634	25.21%	26	0.25%	884	8.46%	10	0.10%
Baltimore City	16,157	2,107	13.04%	107	0.66%	20	0.12%	3,724	23.05%	111	0.69%	2,410	14.92%	123	0.76%
Edison Schools	226	25	11.06%	1	0.44%	0	0.00%	82	36.28%	2	0.88%	20	8.85%	0	0.00%
Baltimore	13,313	777	5.84%	83	0.62%	25	0.19%	3,382	25.40%	27	0.20%	1,302	9.78%	51	0.38%
Calvert	2,183	95	4.35%	15	0.69%	3	0.14%	674	30.87%	4	0.18%	134	6.14%	8	0.37%
Caroline	714	62	8.68%	1	0.14%	3	0.42%	226	31.65%	0	0.00%	27	3.78%	4	0.56%
Carroll	3,732	115	3.08%	26	0.70%	1	0.03%	1,366	36.60%	21	0.56%	147	3.94%	30	0.80%
Cecil	2,606	102	3.91%	15	0.58%	4	0.15%	738	28.32%	10	0.38%	139	5.33%	18	0.69%
Charles	2,577	321	12.46%	13	0.50%	3	0.12%	605	23.48%	6	0.23%	270	10.48%	5	0.19%
Dorchester	642	49	7.63%	4	0.62%	3	0.47%	181	28.19%	4	0.62%	16	2.49%	0	0.00%
Frederick	4,537	138	3.04%	33	0.73%	6	0.13%	1,499	33.04%	17	0.37%	283	6.24%	22	0.48%
Garrett	743	30	4.04%	3	0.40%	0	0.00%	203	27.32%	0	0.00%	69	9.29%	1	0.13%
Harford	5,803	225	3.88%	31	0.53%	8	0.14%	1,704	29.36%	19	0.33%	277	4.77%	28	0.48%
Howard	4,830	196	4.06%	21	0.43%	14	0.29%	1,585	32.82%	22	0.46%	266	5.51%	38	0.79%
Kent	336	28	8.33%	1	0.30%	1	0.30%	80	23.81%	1	0.30%	20	5.95%	0	0.00%
Montgomery	16,471	401	2.43%	120	0.73%	126	0.76%	5,257	31.92%	65	0.39%	1,155	7.01%	58	0.35%
Prince George's	14,853	945	6.36%	127	0.86%	41	0.28%	2,954	19.89%	46	0.31%	1,304	8.78%	122	0.82%
Queen Anne's	1,026	29	2.83%	1	0.10%	3	0.29%	186	18.13%	2	0.19%	49	4.78%	3	0.29%
St. Mary's	2,121	102	4.81%	16	0.75%	4	0.19%	678	31.97%	12	0.57%	101	4.76%	17	0.80%
Somerset	375	60	16.00%	1	0.27%	1	0.27%	49	13.07%	2	0.53%	20	5.33%	0	0.00%
Talbot	474	71	14.98%	3	0.63%	1	0.21%	118	24.89%	1	0.21%	25	5.27%	2	0.42%
Washington	2,925	166	5.68%	14	0.48%	3	0.10%	714	24.41%	11	0.38%	147	5.03%	14	0.48%
Wicomico	1,679	226	13.46%	3	0.18%	5	0.30%	406	24.18%	7	0.42%	56	3.34%	5	0.30%
Worcester	888	85	9.57%	5	0.56%	2	0.23%	319	35.92%	1	0.11%	10	1.13%	3	0.34%
Total Local Education Agencies	111,551	6,942	6.22%	703	0.63%	288	0.26%	29,818	26.73%	419	0.38%	9,212	8.26%	564	0.51%
Department of Juvenile Justice	179	8	4.47%	0	0.00%	0	0.00%	2	1.12%	1	0.56%	77	43.02%	1	0.56%
Cheltenham Detention Facility	18	0	0.00%	0	0.00%	0	0.00%	0	0.00%	0	0.00%	10	55.56%	0	0.00%
Cumberland Youth Services Ctr.	25	2	8.00%	0	0.00%	0	0.00%	0	0.00%	0	0.00%	4	16.00%	0	0.00%
Hickey School	28	1	3.57%	0	0.00%	0	0.00%	0	0.00%	1	3.57%	16	57.14%	1	3.57%
Noyse Childrens Center	16	0	0.00%	0	0.00%	0	0.00%	2	12.50%	0	0.00%	7	43.75%	0	0.00%
Thomas JS Waxter Children's Ctr.	10	1	10.00%	0	0.00%	0	0.00%	0	0.00%	0	0.00%	4	40.00%	0	0.00%
Thomas O'Farrell	25	3	12.00%	0	0.00%	0	0.00%	0	0.00%	0	0.00%	14	56.00%	0	0.00%
Victor Cullen Academy	57	1	1.75%	0	0.00%	0	0.00%	0	0.00%	0	0.00%	22	38.60%	0	0.00%
Adult Corrections	72	1	1.39%	0	0.00%	0	0.00%	0	0.00%	0	0.00%	12	16.67%	0	0.00%
Maryland School for the Blind	175	0	0.00%	0	0.00%	0	0.00%	0	0.00%	165	94.29%	0	0.00%	0	0.00%
Maryland School for the Deaf	449	0	0.00%	0	0.00%	434	96.66%	0	0.00%	0	0.00%	0	0.00%	0	0.00%
Total State Operated Programs	875	9	1.03%	0	0.00%	434	49.60%	2	0.23%	166	18.97%	89	10.17%	1	0.11%

Table 1 (Continued)

Students with Disabilities by Disability  
December 1, 2001

	Other Health Impaired		Specific Learning Disabilities		Deaf/Blind		Multiple Disabilities		Autism		Traumatic Brain Injury		Developmental Delay	
	Total	Percent	Total	Percent	Total	Percent	Total	Percent	Total	Percent	Total	Percent	Total	Percent
Total State	8,698	7.74%	43,345	38.55%	26	0.02%	6,028	5.36%	2,823	2.51%	349	0.31%	2,510	2.23%
Allegany	152	8.03%	840	44.40%	0	0.00%	153	8.09%	8	0.42%	2	0.11%	61	3.22%
Anne Arundel	694	6.64%	4,437	42.47%	1	0.01%	666	6.37%	316	3.02%	31	0.30%	229	2.19%
Baltimore City	1,361	8.42%	5,496	34.02%	0	0.00%	91	0.56%	397	2.46%	62	0.38%	148	0.92%
Edison Schools	36	15.93%	55	24.34%	0	0.00%	4	1.77%	0	0.00%	0	0.00%	1	0.44%
Baltimore	1,027	7.71%	5,359	40.25%	3	0.02%	346	2.60%	442	3.32%	47	0.35%	442	3.32%
Calvert	131	6.00%	1,015	46.50%	0	0.00%	42	1.92%	48	2.20%	2	0.09%	12	0.55%
Caroline	5	0.70%	334	46.78%	0	0.00%	34	4.76%	18	2.52%	0	0.00%	0	0.00%
Carroll	324	8.68%	1,357	36.36%	1	0.03%	266	7.13%	51	1.37%	20	0.54%	7	0.19%
Cecil	139	5.33%	1,267	48.62%	0	0.00%	86	3.30%	36	1.38%	9	0.35%	43	1.65%
Charles	138	5.36%	1,006	39.04%	0	0.00%	76	2.95%	37	1.44%	14	0.54%	83	3.22%
Dorchester	13	2.02%	307	47.82%	0	0.00%	58	9.03%	6	0.93%	1	0.16%	0	0.00%
Frederick	543	11.97%	1,686	37.16%	2	0.04%	119	2.62%	156	3.44%	7	0.15%	26	0.57%
Garrett	7	0.94%	373	50.20%	0	0.00%	57	7.67%	0	0.00%	0	0.00%	0	0.00%
Harford	966	16.65%	2,194	37.81%	2	0.03%	176	3.03%	63	1.09%	17	0.29%	93	1.60%
Howard	599	12.40%	1,370	28.36%	1	0.02%	212	4.39%	291	6.02%	21	0.43%	194	4.02%
Kent	21	6.25%	158	47.02%	0	0.00%	11	3.27%	4	1.19%	2	0.60%	9	2.68%
Montgomery	997	6.05%	6,032	36.62%	2	0.01%	1,484	9.01%	409	2.48%	39	0.24%	326	1.98%
Prince George's	854	5.75%	5,492	36.98%	3	0.02%	1,746	11.76%	404	2.72%	41	0.28%	774	5.21%
Queen Anne's	49	4.78%	641	62.48%	0	0.00%	17	1.66%	7	0.68%	3	0.29%	36	3.51%
St. Mary's	88	4.15%	1,039	48.99%	0	0.00%	29	1.37%	27	1.27%	7	0.33%	1	0.05%
Somerset	8	2.13%	201	53.60%	1	0.27%	17	4.53%	6	1.60%	3	0.80%	6	1.60%
Talbot	14	2.95%	214	45.15%	0	0.00%	15	3.16%	8	1.69%	2	0.42%	0	0.00%
Washington	386	13.20%	1,320	45.13%	0	0.00%	102	3.49%	39	1.33%	9	0.31%	0	0.00%
Wicomico	112	6.67%	644	38.36%	0	0.00%	153	9.11%	39	2.32%	5	0.30%	18	1.07%
Worcester	27	3.04%	392	44.14%	0	0.00%	27	3.04%	11	1.24%	5	0.56%	1	0.11%
Total Local Education Agencies	8,691	7.79%	43,229	38.75%	16	0.01%	5,987	5.37%	2,823	2.53%	349	0.31%	2,510	2.25%
Department of Juvenile Justice	7	3.91%	73	40.78%	0	0.00%	10	5.59%	0	0.00%	0	0.00%	0	0.00%
Cheltenham Detention Facility	0	0.00%	8	44.44%	0	0.00%	0	0.00%	0	0.00%	0	0.00%	0	0.00%
Cumberland Youth Services Ctr.	1	4.00%	16	64.00%	0	0.00%	2	8.00%	0	0.00%	0	0.00%	0	0.00%
Hickey School	2	7.14%	7	25.00%	0	0.00%	0	0.00%	0	0.00%	0	0.00%	0	0.00%
Noyse Childrens Center	1	6.25%	4	25.00%	0	0.00%	2	12.50%	0	0.00%	0	0.00%	0	0.00%
Thomas JS Waxter Children's Ctr.	1	10.00%	3	30.00%	0	0.00%	1	10.00%	0	0.00%	0	0.00%	0	0.00%
Thomas O'Farrell	1	4.00%	6	24.00%	0	0.00%	1	4.00%	0	0.00%	0	0.00%	0	0.00%
Victor Cullen Academy	1	1.75%	29	50.88%	0	0.00%	4	7.02%	0	0.00%	0	0.00%	0	0.00%
Adult Corrections	0	0.00%	43	59.72%	0	0.00%	16	22.22%	0	0.00%	0	0.00%	0	0.00%
Maryland School for the Blind	0	0.00%	0	0.00%	10	5.71%	0	0.00%	0	0.00%	0	0.00%	0	0.00%
Maryland School for the Deaf	0	0.00%	0	0.00%	0	0.00%	15	3.34%	0	0.00%	0	0.00%	0	0.00%
Total State Operated Programs	7	0.80%	116	13.26%	10	1.14%	41	4.69%	0	0.00%	0	0.00%	0	0.00%



Figure 1  
Students with Disabilities by Disability

December 1, 2001

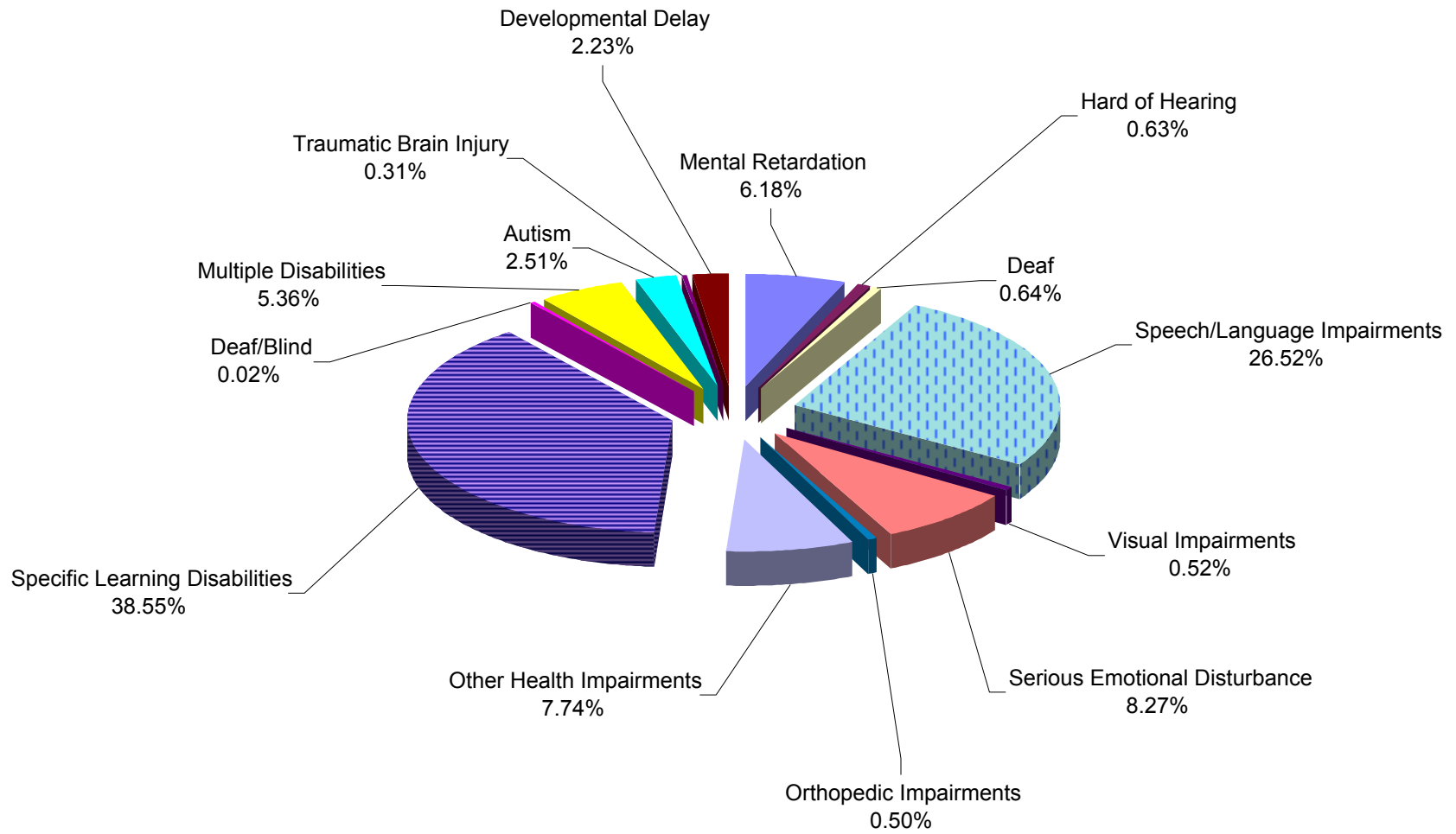


Table 2

## Students with Disabilities as Percent of September 30 Enrollment\*: Maryland Public Schools

Local Education Agency	1991			1996			2001		
	Sept. 30 Enrollment	Special Education	Percent	Sept. 30 Enrollment	Special Education	Percent	Sept. 30 Enrollment	Special Education	Percent
Total State	736,238	88,604	12.0%	818,583	103,695	12.7%	860,640	111,551	13.0%
Allegany	11,198	1,340	12.0	11,190	1,578	14.1	10,180	1,892	18.6
Anne Arundel	66,695	8,612	12.9	72,322	9,977	13.8	75,081	10,448	13.9
Baltimore City	110,325	17,095	15.5	108,759	18,164	16.7	95,475	16,157	16.9
Edison Schools	0	NA	NA	0	NA	NA	2,342	226	9.6
Baltimore	89,964	11,109	12.3	104,073	12,914	12.4	107,212	13,313	12.4
Calvert	10,999	1,365	12.4	14,152	1,645	11.6	16,651	2,183	13.1
Caroline	4,893	586	12.0	5,589	823	14.7	5,609	714	12.7
Carroll	22,464	2,690	12.0	26,231	3,655	13.9	28,127	3,732	13.3
Cecil	13,255	1,739	13.1	14,897	2,222	14.9	16,095	2,606	16.2
Charles	19,203	2,412	12.6	21,159	2,632	12.4	24,001	2,577	10.7
Dorchester	4,968	691	13.9	5,250	674	12.8	4,884	642	13.1
Frederick	27,935	3,180	11.4	33,749	4,273	12.7	38,022	4,537	11.9
Garrett	5,110	691	13.5	5,161	739	14.3	4,869	743	15.3
Harford	32,868	3,527	10.7	37,709	4,760	12.6	39,966	5,803	14.5
Howard	31,599	3,498	11.1	38,857	4,023	10.4	46,257	4,830	10.4
Kent	2,614	264	10.1	2,898	321	11.1	2,684	336	12.5
Montgomery	107,399	10,960	10.2	122,505	14,317	11.7	136,895	16,471	12.0
Prince George's	111,652	11,077	9.9	125,198	12,147	9.7	135,039	14,853	11.0
Queen Anne's	5,541	633	11.4	6,364	854	13.4	7,232	1,026	14.2
St. Mary's	12,955	1,741	13.4	14,318	1,987	13.9	15,482	2,121	13.7
Somerset	3,400	405	11.9	3,197	405	12.7	3,060	375	12.3
Talbot	4,196	393	9.4	4,445	581	13.1	4,516	474	10.5
Washington	18,092	2,645	14.6	19,896	2,805	14.1	19,961	2,925	14.7
Wicomico	13,074	1,431	10.9	13,900	1,448	10.4	14,116	1,679	11.9
Worcester	5,839	520	8.9	6,764	751	11.1	6,884	888	12.9

\* LEA totals only - does not include SOPs

\*\*September 30 Enrollment includes Special Education students. Table will remain in this format to preserve historical integrity.

Table 3

Students with Disabilities Trend in High Growth Disabilities  
1991 - 2001

	1991	1992	1993	1994	1995	1996	1997	1998	1999	2000	2001
Total State	89,414	91,813	94,999	96,779	100,863	104,630	109,084	111,688	111,711	112,078	112,426
Specific Learning Disabilities	42,427	43,096	43,007	44,816	43,482	43,958	45,189	45,927	45,459	44,379	43,345
Emotionally Impaired	5,083	5,407	5,669	5,638	6,737	7,724	7,724	8,358	8,714	9,145	9,301
Multiple Disabilities	4,408	4,685	5,404	5,352	5,385	5,691	6,264	6,635	6,503	6,437	6,028
Autism	NA	41	280	422	697	999	1,282	1,594	1,886	2,304	2,823

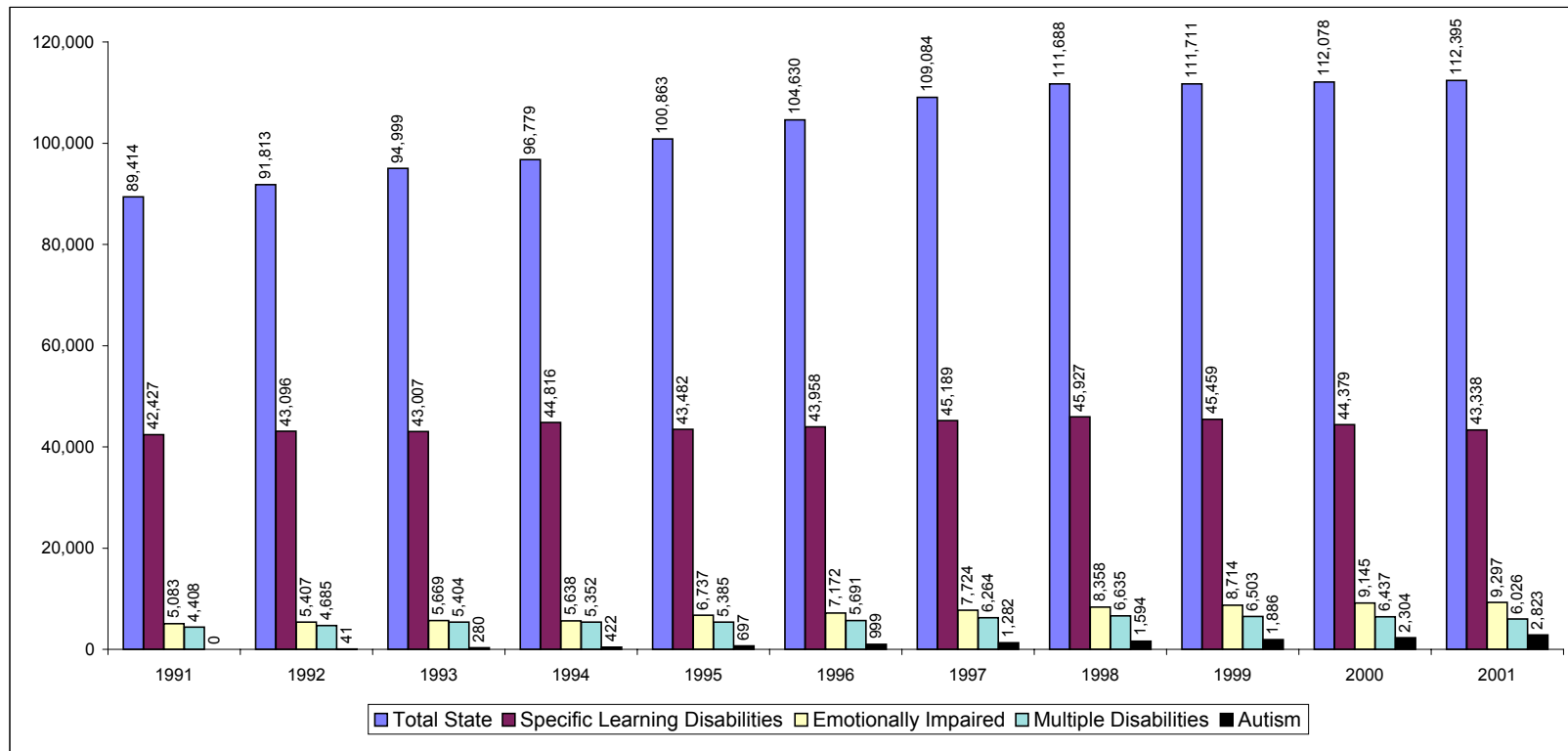


Figure 2  
Students with Disabilities  
Trend Data in High Growth Disabilities  
1991-2001

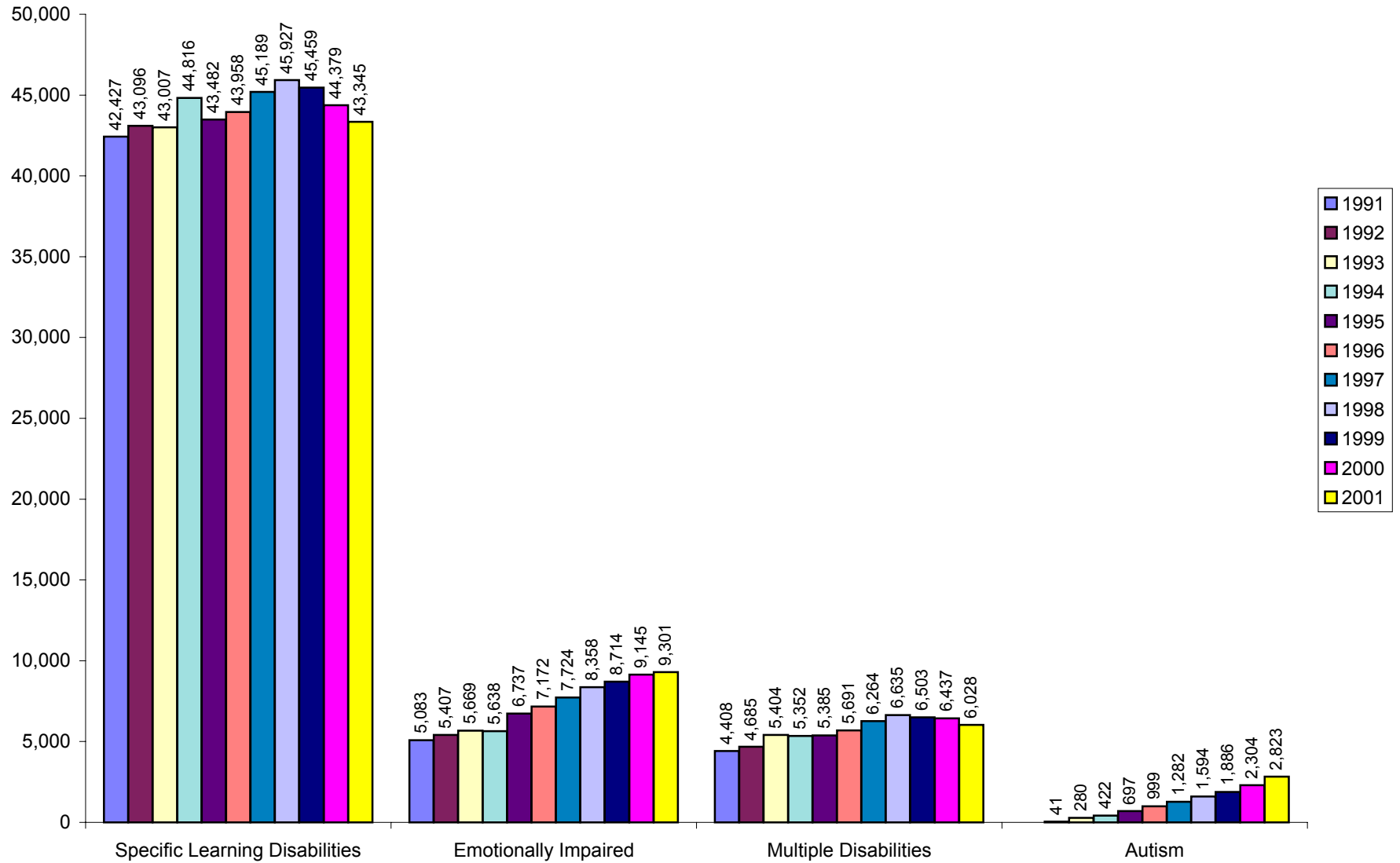


Table 4  
 Students with Disabilities by Age  
 December 1, 2001

	Total	Age																			
		3	4	5	6	7	8	9	10	11	12	13	14	15	16	17	18	19	20	21	
Total State	112,426	2,590	3,581	4,443	5,308	6,230	7,221	8,835	9,669	10,000	10,030	9,646	8,891	8,291	7,437	6,045	2,666	862	562	119	
Allegany	1,892	51	63	102	99	123	151	193	163	151	167	151	116	108	111	96	36	7	4	0	
Anne Arundel	10,448	312	328	350	442	516	607	793	872	961	943	875	884	857	755	605	245	66	37	0	
Baltimore City	16,157	310	461	549	612	814	947	1,177	1,442	1,559	1,588	1,543	1,310	1,232	1,013	828	461	193	100	18	
Edison Schools Baltimore	226	0	3	10	24	31	23	37	45	40	12	1	0	0	0	0	0	0	0	0	
	13,313	277	497	676	747	765	971	1,100	1,149	1,050	1,063	1,159	1,000	950	817	673	263	79	57	20	
Calvert	2,183	41	66	96	125	102	124	191	191	205	209	199	193	171	128	84	47	4	7	0	
Caroline	714	13	22	36	45	44	47	60	70	57	64	76	48	42	34	39	10	2	4	1	
Carroll	3,732	69	113	123	191	199	247	297	302	309	341	341	314	288	260	229	78	14	12	5	
Cecil	2,606	38	92	122	174	172	165	212	228	217	246	233	208	192	145	100	46	6	8	2	
Charles	2,577	68	103	116	105	146	151	176	206	198	218	236	225	212	188	142	55	17	13	2	
Dorchester	642	18	20	15	26	39	52	57	58	76	66	51	43	35	38	31	12	2	3	0	
Frederick	4,537	75	118	160	220	301	308	404	412	408	426	383	378	284	285	238	90	29	14	4	
Garrett	743	6	18	27	44	44	43	55	80	77	67	54	68	47	48	40	17	3	4	1	
Harford	5,803	170	220	235	301	371	419	497	544	548	499	392	403	418	349	277	109	34	14	3	
Howard	4,830	195	215	255	238	271	307	327	399	382	399	368	387	334	335	270	94	28	21	5	
Kent	336	2	5	10	21	26	28	30	32	35	30	22	15	26	22	23	5	1	3	0	
Montgomery	16,471	389	540	641	793	891	1,026	1,267	1,435	1,480	1,426	1,402	1,282	1,210	1,119	927	407	138	87	11	
Prince George's	14,853	351	415	508	555	694	872	1,127	1,194	1,399	1,413	1,376	1,254	1,148	1,059	841	412	134	81	20	
Queen Anne's	1,026	20	43	49	41	70	59	92	76	95	96	95	92	70	55	58	12	1	2	0	
St. Mary's	2,121	37	62	102	149	149	164	185	195	196	156	140	122	131	142	111	48	20	10	2	
Somerset	375	4	3	14	18	35	21	41	34	24	33	29	24	22	36	24	8	4	1	0	
Talbot	474	8	15	16	29	31	29	27	38	41	39	38	36	44	29	30	15	3	5	1	
Washington	2,925	63	60	105	154	184	219	217	229	233	268	251	256	238	191	156	66	16	12	7	
Wicomico	1,679	42	46	61	90	103	146	159	152	149	133	131	101	103	113	83	46	11	9	1	
Worcester	888	17	28	35	41	70	57	73	79	68	73	68	68	63	64	57	16	8	3	0	
Total Local Education Agencies	111,551	2,576	3,556	4,413	5,284	6,191	7,183	8,794	9,625	9,958	9,975	9,614	8,827	8,225	7,336	5,962	2,598	820	511	103	
Department of Juvenile Justice	179	0	0	0	0	0	0	0	0	1	1	2	15	24	66	44	22	4	0	0	
Adult Corrections	72	0	0	0	0	0	0	0	0	0	0	0	0	0	0	2	9	16	32	13	
Maryland School for the Blind	175	1	5	7	4	10	8	4	11	4	9	8	10	15	11	12	24	17	12	3	
Maryland School for the Deaf	449	13	20	23	20	29	30	37	33	37	45	22	39	27	24	25	13	5	7	0	
Total State Operated Programs	875	14	25	30	24	39	38	41	44	42	55	32	64	66	101	83	68	42	51	16	

Table 5  
 Students with Disabilities by Age and Disability  
 December 1, 2001

Age	Total	Mental Retardation	Hearing Impaired	Deaf	Speech/ Language	Visually Impaired	Emotion-ally Disturbed	Orthope-dically Impaired	Other Health Impaired	Specific Learning Disabilities	Deaf/ Blind	Multiple Disabilities	Autism	Traumatic Brain Injury	Develop-mental Delay
Total	112,426	6,951	703	722	29,820	585	9,301	565	8,698	43,345	26	6,028	2,823	349	2,510
3	2,590	26	14	26	1,474	18	5	29	53	21	2	66	97	6	753
4	3,581	38	37	36	2,193	23	10	27	77	15	0	90	141	6	888
5	4,443	88	45	39	3,030	22	20	50	122	36	1	127	189	7	667
3-5	10,614	152	96	101	6,697	63	35	106	252	72	3	283	427	19	2,308
6	5,308	194	40	34	3,842	28	69	36	241	209	1	211	218	10	175
7	6,230	301	40	47	3,697	34	166	41	437	844	2	312	274	8	27
8	7,221	371	48	51	3,241	32	332	51	685	1,755	3	395	242	15	0
9	8,835	483	54	57	3,122	37	506	41	851	2,892	2	458	304	28	0
10	9,669	568	50	58	2,500	46	699	32	936	4,003	0	516	234	27	0
11	10,000	542	47	49	1,908	46	847	35	953	4,826	0	506	215	26	0
6-11	47,263	2,459	279	296	18,310	223	2,619	236	4,103	14,529	8	2,398	1,487	114	202
12	10,030	583	63	58	1,387	32	968	28	925	5,254	1	530	173	28	0
13	9,646	582	49	41	1,099	38	1,056	33	912	5,165	1	503	132	35	0
14	8,891	604	56	54	762	42	1,096	34	750	4,860	0	472	141	20	0
15	8,291	578	46	42	612	42	1,143	30	664	4,532	1	454	120	27	0
16	7,437	569	50	47	479	40	1,047	37	580	4,008	3	443	102	32	0
17	6,045	518	47	39	331	36	825	32	364	3,384	0	348	87	34	0
12-17	50,340	3,434	311	281	4,670	230	6,135	194	4,195	27,203	6	2,750	755	176	0
18	2,666	360	14	26	119	35	344	16	120	1,274	7	266	63	22	0
19	862	274	1	8	17	18	122	7	15	188	1	166	35	10	0
20	562	230	2	9	5	12	37	5	11	64	1	136	45	5	0
21	119	42	0	1	2	4	9	1	2	15	0	29	11	3	0
18-21	4,209	906	17	44	143	69	512	29	148	1,541	9	597	154	40	0

Table 6  
 Students with Disabilities by Grade  
 Grades 1 - 6, Prek, and Kindergarten  
 December 1, 2001

	Kinder- garten		Pre- school		Grade												
	Total	Total	Percent	Total	Percent	1		2		3		4		5		6	
						Total	Percent	Total	Percent	Total	Percent	Total	Percent	Total	Percent	Total	Percent
Total State	112,426	4,697	4.18%	6,261	5.57%	5,791	5.15%	6,551	5.83%	7,482	6.66%	8,990	8.00%	9,531	8.48%	9,762	8.69%
Allegany	1,892	100	5.29%	119	6.29%	94	4.97%	107	5.66%	139	7.35%	160	8.46%	155	8.19%	150	7.93%
Anne Arundel	10,448	329	3.15%	709	6.79%	468	4.48%	525	5.02%	637	6.10%	777	7.44%	842	8.06%	868	8.31%
Baltimore City	16,157	573	3.55%	864	5.35%	734	4.54%	1,015	6.28%	1,070	6.62%	1,357	8.40%	1,476	9.13%	1,579	9.77%
Edison Schools	226	7	3.83%	2	1.09%	24	13.11%	35	19.13%	31	16.94%	44	24.04%	42	22.95%	41	22.40%
Baltimore	13,313	724	5.44%	768	5.77%	778	5.84%	803	6.03%	991	7.44%	1,097	8.24%	1,149	8.63%	1,017	7.64%
Calvert	2,183	96	4.40%	118	5.41%	133	6.09%	115	5.27%	138	6.32%	170	7.79%	219	10.03%	191	8.75%
Caroline	714	47	6.58%	50	7.00%	46	6.44%	47	6.58%	49	6.86%	58	8.12%	54	7.56%	62	8.68%
Carroll	3,732	197	5.28%	127	3.40%	196	5.25%	195	5.23%	235	6.30%	294	7.88%	269	7.21%	280	7.50%
Cecil	2,606	135	5.18%	116	4.45%	199	7.64%	180	6.91%	199	7.64%	210	8.06%	248	9.52%	208	7.98%
Charles	2,577	92	3.57%	203	7.88%	143	5.55%	149	5.78%	157	6.09%	202	7.84%	195	7.57%	226	8.77%
Dorchester	642	22	3.43%	37	5.76%	35	5.45%	30	4.67%	57	8.88%	54	8.41%	56	8.72%	91	14.17%
Frederick	4,537	176	3.88%	205	4.52%	268	5.91%	290	6.39%	318	7.01%	387	8.53%	412	9.08%	421	9.28%
Garrett	743	34	4.58%	22	2.96%	44	5.92%	53	7.13%	44	5.92%	63	8.48%	69	9.29%	78	10.50%
Harford	5,803	268	4.62%	421	7.25%	336	5.79%	372	6.41%	421	7.25%	519	8.94%	502	8.65%	568	9.79%
Howard	4,830	252	5.21%	457	9.44%	249	5.15%	277	5.72%	301	6.22%	346	7.15%	400	8.27%	373	7.71%
Kent	336	7	2.08%	8	2.38%	22	6.55%	28	8.33%	34	10.12%	31	9.23%	31	9.23%	34	10.12%
Montgomery	16,471	699	4.24%	893	5.42%	848	5.15%	931	5.65%	1,058	6.42%	1,296	7.87%	1,475	8.96%	1,442	8.75%
Prince George's	14,853	531	3.58%	735	4.95%	573	3.86%	715	4.81%	861	5.80%	1,111	7.48%	1,108	7.46%	1,338	9.01%
Queen Anne's	1,026	42	4.09%	73	7.12%	47	4.58%	64	6.24%	68	6.63%	95	9.26%	87	8.48%	93	9.06%
St. Mary's	2,121	111	5.23%	97	4.57%	165	7.78%	159	7.50%	156	7.36%	198	9.34%	199	9.38%	162	7.64%
Somerset	375	10	2.67%	6	1.60%	18	4.80%	37	9.87%	35	9.33%	31	8.27%	31	8.27%	28	7.47%
Talbot	474	21	4.43%	18	3.80%	37	7.81%	26	5.49%	35	7.38%	38	8.02%	31	6.54%	41	8.65%
Washington	2,925	118	4.03%	28	0.96%	159	5.44%	196	6.70%	225	7.69%	204	6.97%	238	8.14%	227	7.76%
Wicomico	1,679	53	3.16%	108	6.43%	111	6.61%	117	6.97%	141	8.40%	155	9.23%	146	8.70%	141	8.40%
Worcester	888	35	3.94%	48	5.41%	49	5.52%	64	7.21%	52	5.86%	70	7.88%	74	8.33%	64	7.21%
Total Local Education Agencies	111,551	4,679	4.20%	6,232	5.59%	5,776	5.18%	6,530	5.86%	7,452	6.68%	8,967	8.04%	9,508	8.53%	9,723	8.72%
Department of Juvenile Justice	179	0	0.00%	0	0.00%	0	0.00%	0	0.00%	0	0.00%	2	1.12%	0	0.00%	3	1.68%
Adult Corrections	72	0	0.00%	0	0.00%	0	0.00%	0	0.00%	0	0.00%	0	0.00%	0	0.00%	0	0.00%
Maryland School for the Blind	175	7	4.00%	6	3.43%	1	0.57%	2	1.14%	5	2.86%	2	1.14%	0	0.00%	4	2.29%
Maryland School for the Deaf	449	11	2.45%	23	5.12%	14	3.12%	19	4.23%	25	5.57%	19	4.23%	23	5.12%	32	7.13%
Total State Operated Programs	875	18	2.06%	29	3.31%	15	1.71%	21	2.40%	30	3.43%	23	2.63%	23	2.63%	39	4.46%

Table 6 (continued)  
 Students with Disabilities by Grade  
 Grades 7 - 12 & Ungraded  
 December 1, 2001

	Grade												Ungraded			
	7		8		9		10		11		12		Elementary		Secondary	
	Total	Percent	Total	Percent	Total	Percent	Total	Percent	Total	Percent	Total	Percent	Total	Percent	Total	Percent
Total State	9,842	8.76%	9,023	8.03%	10,310	9.17%	7,880	7.01%	6,303	5.61%	5,553	4.94%	1,945	1.73%	2,505	2.23%
Allegany	142	7.51%	135	7.14%	106	5.60%	87	4.60%	88	4.65%	89	4.70%	96	5.07%	125	6.61%
Anne Arundel	897	8.59%	798	7.64%	1,016	9.72%	727	6.96%	606	5.80%	464	4.44%	347	3.32%	438	4.19%
Baltimore City	1,629	10.08%	1,436	8.89%	1,768	10.94%	1,178	7.29%	805	4.98%	669	4.14%	1	0.01%	3	0.02%
Edison Schools	0	0.00%	0	0.00%	0	0.00%	0	0.00%	0	0.00%	0	0.00%	0	0.00%	0	0.00%
Baltimore	1,096	8.23%	1,073	8.06%	1,035	7.77%	917	6.89%	743	5.58%	653	4.90%	196	1.47%	273	2.05%
Calvert	213	9.76%	183	8.38%	176	8.06%	146	6.69%	107	4.90%	62	2.84%	41	1.88%	75	3.44%
Caroline	63	8.82%	66	9.24%	87	12.18%	30	4.20%	34	4.76%	7	0.98%	6	0.84%	8	1.12%
Carroll	311	8.33%	301	8.07%	297	7.96%	258	6.91%	221	5.92%	210	5.63%	130	3.48%	211	5.65%
Cecil	236	9.06%	219	8.40%	207	7.94%	165	6.33%	117	4.49%	97	3.72%	0	0.00%	70	2.69%
Charles	196	7.61%	236	9.16%	276	10.71%	221	8.58%	138	5.36%	122	4.73%	0	0.00%	21	0.81%
Dorchester	62	9.66%	49	7.63%	61	9.50%	32	4.98%	30	4.67%	25	3.89%	0	0.00%	1	0.16%
Frederick	397	8.75%	373	8.22%	403	8.88%	273	6.02%	264	5.82%	236	5.20%	34	0.75%	80	1.76%
Garrett	70	9.42%	57	7.67%	63	8.48%	42	5.65%	33	4.44%	36	4.85%	5	0.67%	30	4.04%
Harford	487	8.39%	326	5.62%	473	8.15%	401	6.91%	281	4.84%	235	4.05%	73	1.26%	120	2.07%
Howard	400	8.27%	391	8.08%	427	8.82%	366	7.56%	303	6.26%	288	5.95%	0	0.00%	0	0.00%
Kent	32	9.52%	23	6.85%	30	8.93%	21	6.25%	23	6.85%	12	3.57%	0	0.00%	0	0.00%
Montgomery	1,453	8.82%	1,393	8.46%	1,496	9.08%	1,245	7.56%	1,091	6.62%	1,142	6.93%	9	0.05%	0	0.00%
Prince George's	1,368	9.21%	1,238	8.34%	1,473	9.92%	1,108	7.46%	879	5.92%	727	4.89%	546	3.68%	542	3.65%
Queen Anne's	90	8.77%	99	9.65%	97	9.45%	72	7.02%	54	5.26%	45	4.39%	0	0.00%	0	0.00%
St. Mary's	158	7.45%	127	5.99%	163	7.69%	121	5.70%	104	4.90%	108	5.09%	34	1.60%	59	2.78%
Somerset	24	6.40%	25	6.67%	19	5.07%	28	7.47%	26	6.93%	21	5.60%	30	8.00%	6	1.60%
Talbot	38	8.02%	31	6.54%	70	14.77%	29	6.12%	29	6.12%	15	3.16%	5	1.05%	10	2.11%
Washington	235	8.03%	242	8.27%	273	9.33%	195	6.67%	149	5.09%	134	4.58%	155	5.30%	147	5.03%
Wicomico	138	8.22%	100	5.96%	100	5.96%	96	5.72%	70	4.17%	53	3.16%	58	3.45%	92	5.48%
Worcester	71	8.00%	60	6.76%	62	6.98%	56	6.31%	64	7.21%	62	6.98%	38	4.28%	19	2.14%
Total Local Education Agencies	9,806	8.79%	8,981	8.05%	10,178	9.13%	7,814	7.01%	6,259	5.61%	5,512	4.94%	1,804	1.62%	2,330	2.09%
Department of Juvenile Justice	7	3.91%	21	11.73%	83	46.37%	45	25.14%	16	8.94%	2	1.12%	0	0.00%	0	0.00%
Adult Corrections	0	0.00%	0	0.00%	0	0.00%	0	0.00%	0	0.00%	0	0.00%	0	0.00%	72	100.00%
Maryland School for the Blind	2	1.14%	2	1.14%	3	1.71%	2	1.14%	4	2.29%	2	1.14%	30	17.14%	103	58.86%
Maryland School for the Deaf	27	6.01%	19	4.23%	46	10.24%	19	4.23%	24	5.35%	37	8.24%	111	24.72%	0	0.00%
Total State Operated Programs	36	4.11%	42	4.80%	132	15.09%	66	7.54%	44	5.03%	41	4.69%	141	16.11%	175	20.00%



Table 7  
 Students with Disabilities by Grade and Disability  
 December 1, 2001

	Total		Mental Retardation		Hearing Impaired		Deaf		Speech/ Language		Visually Impaired		Emotion-ally Disturbed		Orthope-dically Impaired	
			Total	Percent	Total	Percent	Total	Percent	Total	Percent	Total	Percent	Total	Percent	Total	Percent
Total	112,426		6,951	6.18%	703	0.63%	722	0.64%	29,820	26.53%	585	0.52%	9,245	8.23%	438	0.39%
Kindergarten	4,697	4.18%	91	1.94%	47	1.00%	33	0.70%	3,284	69.93%	26	0.55%	20	0.43%	53	1.13%
Preschool	6,261	5.57%	81	1.29%	49	0.78%	51	0.81%	3,622	57.86%	39	0.62%	36	0.58%	74	1.18%
Grade 1	5,791	5.15%	191	3.30%	43	0.74%	28	0.48%	4,105	70.91%	25	0.43%	89	1.54%	30	0.52%
Grade 2	6,551	5.83%	294	4.49%	43	0.66%	42	0.64%	3,687	56.30%	35	0.53%	203	3.10%	46	0.70%
Grade 3	7,482	6.66%	384	5.14%	49	0.66%	47	0.63%	3,217	43.04%	31	0.41%	367	4.91%	52	0.70%
Grade 4	8,990	8.00%	454	5.06%	56	0.62%	50	0.56%	3,038	33.83%	33	0.37%	551	6.14%	40	0.45%
Grade 5	9,531	8.48%	494	5.19%	47	0.49%	40	0.42%	2,446	25.68%	36	0.38%	739	7.76%	28	0.29%
Grade 6	9,762	8.68%	472	4.84%	49	0.50%	39	0.40%	1,719	17.63%	40	0.41%	899	9.22%	29	0.30%
Grade 7	9,842	8.75%	577	5.86%	62	0.63%	45	0.46%	1,291	13.12%	29	0.29%	1,023	10.39%	22	0.22%
Grade 8	9,023	8.03%	518	5.74%	44	0.49%	40	0.44%	1,008	11.17%	34	0.38%	993	11.01%	36	0.40%
Grade 9	10,310	9.17%	652	6.32%	65	0.63%	67	0.65%	827	8.02%	39	0.38%	1,411	13.68%	37	0.36%
Grade 10	7,880	7.01%	552	7.01%	46	0.58%	30	0.38%	536	6.80%	29	0.37%	1,112	14.11%	31	0.39%
Grade 11	6,303	5.61%	498	7.90%	48	0.76%	49	0.78%	392	6.22%	31	0.49%	837	13.28%	30	0.48%
Grade 12	5,553	4.94%	515	9.26%	41	0.74%	59	1.06%	350	6.29%	32	0.58%	651	11.70%	35	0.63%
Ungraded Elementary	1,945	1.73%	375	19.28%	8	0.41%	99	5.09%	231	11.88%	29	1.49%	88	4.52%	11	0.57%
Ungraded Secondary	2,505	2.23%	803	32.06%	6	0.24%	3	0.12%	67	2.67%	97	3.87%	282	11.26%	11	0.44%

Table 7 continued

Students with Disabilities by Grade and Disability  
December 1, 2001

	Other Health Impaired		Specific Learning Disabilities		Multiple Disabilities		Deaf/Blind		Autism		Traumatic Brain Injury		Developmental Delay	
	Total	Percent	Total	Percent	Total	Percent	Total	Percent	Total	Percent	Total	Percent	Total	Percent
Total	8,698	7.74%	43,345	38.56%	6,028	5.36%	26	0.02%	2,823	2.51%	349	0.31%	2,510	2.23%
Kindergarten	136	2.90%	58	1.24%	110	2.34%	0	0.00%	198	4.22%	7	0.15%	634	13.50%
Preschool	147	2.35%	37	0.59%	166	2.65%	3	0.05%	273	4.36%	12	0.19%	1,671	26.69%
Grade 1	311	5.37%	413	7.13%	189	3.26%	0	0.00%	193	3.33%	9	0.16%	165	2.85%
Grade 2	510	7.79%	1,140	17.41%	292	4.46%	0	0.00%	230	3.51%	12	0.18%	17	0.26%
Grade 3	693	9.27%	2,087	27.92%	325	4.35%	1	0.01%	208	2.78%	20	0.27%	1	0.01%
Grade 4	881	9.81%	3,240	36.08%	384	4.28%	0	0.00%	237	2.64%	26	0.29%	0	0.00%
Grade 5	901	9.46%	4,165	43.72%	420	4.41%	0	0.00%	198	2.08%	17	0.18%	0	0.00%
Grade 6	962	9.86%	4,935	50.61%	429	4.40%	0	0.00%	162	1.66%	27	0.28%	0	0.00%
Grade 7	938	9.53%	5,272	53.57%	425	4.32%	1	0.01%	126	1.28%	31	0.31%	0	0.00%
Grade 8	838	9.29%	4,976	55.15%	402	4.46%	0	0.00%	111	1.23%	23	0.25%	0	0.00%
Grade 9	846	8.20%	5,787	56.12%	433	4.20%	1	0.01%	118	1.14%	27	0.26%	0	0.00%
Grade 10	630	7.99%	4,356	55.28%	405	5.14%	1	0.01%	120	1.52%	32	0.41%	0	0.00%
Grade 11	442	7.01%	3,531	56.01%	317	5.03%	2	0.03%	101	1.60%	25	0.40%	0	0.00%
Grade 12	316	5.68%	3,039	54.63%	347	6.24%	1	0.02%	114	2.05%	53	0.95%	0	0.00%
Ungraded Elementary	75	3.86%	104	5.35%	593	30.49%	7	0.36%	287	14.76%	17	0.87%	21	1.08%
Ungraded Secondary	72	2.87%	205	8.18%	791	31.58%	9	0.36%	147	5.87%	11	0.44%	1	0.04%

Table 8  
 Students with Disabilities by Gender  
 December 1, 2001

	Grand Total	Male		Female	
		Total	Percent	Total	Percent
Total State	112,426	76,932	68.4%	35,494	31.6%
Allegany	1,892	1,233	65.2	659	34.8
Anne Arundel	10,448	7,087	67.8	3,361	32.2
Baltimore City	16,157	11,183	69.2	4,974	30.8
Edison Schools	226	160	70.8	66	29.2
Baltimore	13,313	9,128	68.6	4,185	31.4
Calvert	2,183	1,417	64.9	766	35.1
Caroline	714	456	63.9	258	36.1
Carroll	3,732	2,581	69.2	1,151	30.8
Cecil	2,606	1,758	67.5	848	32.5
Charles	2,577	1,807	70.1	770	29.9
Dorchester	642	434	67.6	208	32.4
Frederick	4,537	3,136	69.1	1,401	30.9
Garrett	743	506	68.1	237	31.9
Harford	5,803	3,955	68.2	1,848	31.8
Howard	4,830	3,391	70.2	1,439	29.8
Kent	336	229	68.2	107	31.8
Montgomery	16,471	11,188	67.9	5,283	32.1
Prince George's	14,853	10,262	69.1	4,591	30.9
Queen Anne's	1,026	723	70.5	303	29.5
St. Mary's	2,121	1,436	67.7	685	32.3
Somerset	375	249	66.4	126	33.6
Talbot	474	335	70.7	139	29.3
Washington	2,925	1,944	66.5	981	33.5
Wicomico	1,679	1,164	69.3	515	30.7
Worcester	888	592	66.7	296	33.3
Total Local Education Agencies	111,551	76,354	68.4	35,197	31.6
Department of Juvenile Justice	179	168	93.9	11	6.1
Cheltenham Detention Center	18	18	100.0	0	0.0
Cumberland Youth Services Ctr.	25	25	100.0	0	0.0
Hickey	28	28	100.0	0	0.0
Noyse Children's Center	16	15	93.8	1	6.3
Thomas JS Waxter Children's Ctr.	10	0	0.0	10	100.0
Thomas O'Farrell	25	25	100.0	0	0.0
Victor Cullen Academy	57	57	100.0	0	0.0
Adult Corrections	72	72	100.0	0	0.0
Maryland School for the Blind	175	97	55.4	78	44.6
Maryland School for the Deaf	449	241	53.7	208	46.3
Total State Operated Programs	875	578	66.1	297	33.9

Table 9  
Students with Disabilities by Race  
December 1, 2001

	Grand Total	American Indian/ Alaskan Native		Asian/ Pacific Islander		African American		White		Hispanic	
		Total	Percent	Total	Percent	Total	Percent	Total	Percent	Total	Percent
Total State	112,426	418	0.4%	2,053	1.8%	44,720	39.8%	60,277	53.6%	4,958	4.4%
Allegany	1,892	9	0.5	6	0.3	81	4.3	1,793	94.8	3	0.2
Anne Arundel	10,448	23	0.2	129	1.2	2,447	23.4	7,642	73.1	207	2.0
Baltimore City	16,157	54	0.3	46	0.3	13,744	85.1	2,240	13.9	73	0.5
Edison Schools	226	0	0.0	1	0.4	225	99.6	0	0.0	0	0.0
Baltimore	13,313	91	0.7	188	1.4	4,467	33.6	8,347	62.7	220	1.7
Calvert	2,183	7	0.3	18	0.8	518	23.7	1,624	74.4	16	0.7
Caroline	714	0	0.0	0	0.0	190	26.6	517	72.4	7	1.0
Carroll	3,732	12	0.3	34	0.9	138	3.7	3,512	94.1	36	1.0
Cecil	2,606	2	0.1	5	0.2	180	6.9	2,385	91.5	34	1.3
Charles	2,577	33	1.3	32	1.2	1,108	43.0	1,369	53.1	35	1.4
Dorchester	642	3	0.5	6	0.9	329	51.2	297	46.3	7	1.1
Frederick	4,537	4	0.1	52	1.1	567	12.5	3,808	83.9	106	2.3
Garrett	743	0	0.0	1	0.1	8	1.1	734	98.8	0	0.0
Harford	5,803	6	0.1	69	1.2	924	15.9	4,713	81.2	91	1.6
Howard	4,830	10	0.2	195	4.0	1,116	23.1	3,377	69.9	132	2.7
Kent	336	1	0.3	0	0.0	117	34.8	214	63.7	4	1.2
Montgomery	16,471	51	0.3	970	5.9	4,357	26.5	8,186	49.7	2,907	17.6
Prince George's	14,853	71	0.5	234	1.6	11,623	78.3	1,979	13.3	946	6.4
Queen Anne's	1,026	3	0.3	4	0.4	153	14.9	864	84.2	2	0.2
St. Mary's	2,121	19	0.9	19	0.9	515	24.3	1,545	72.8	23	1.1
Somerset	375	2	0.5	3	0.8	160	42.7	206	54.9	4	1.1
Talbot	474	2	0.4	3	0.6	164	34.6	295	62.2	10	2.1
Washington	2,925	9	0.3	10	0.3	238	8.1	2,630	89.9	38	1.3
Wicomico	1,679	4	0.2	16	1.0	683	40.7	948	56.5	28	1.7
Worcester	888	1	0.1	1	0.1	327	36.8	548	61.7	11	1.2
Total Local Education Agencies	111,551	417	0.4	2,042	1.8	44,379	39.8	59,773	53.6	4,940	4.4
Department of Juvenile Justice	179	0	0.0	1	0.6	130	72.6	43	24.0	5	2.8
Cheltenham Detention Center	18	0	0.0	1	5.6	13	72.2	4	22.2	0	0.0
Cumberland Youth Services Ctr.	25	0	0.0	0	0.0	20	80.0	5	20.0	0	0.0
Hickey School	28	0	0.0	0	0.0	24	85.7	3	10.7	1	3.6
Noyse Children's Center	16	0	0.0	0	0.0	6	37.5	9	56.3	1	6.3
Thomas JS Waxter Children's Ctr.	10	0	0.0	0	0.0	7	70.0	3	30.0	0	0.0
Thomas O'Farrell	25	0	0.0	0	0.0	20	80.0	5	20.0	0	0.0
Victor Cullen Academy	57	0	0.0	0	0.0	40	70.2	14	24.6	3	5.3
Adult Corrections	72	0	0.0	0	0.0	56	77.8	16	22.2	0	0.0
Maryland School for the Blind	175	1	0.6	2	1.1	64	36.6	103	58.9	5	2.9
Maryland School for the Deaf	449	0	0.0	8	1.8	91	20.3	342	76.2	8	1.8
Total State Operated Programs	875	1	0.1	11	1.3	341	39.0	504	57.6	18	2.1

Table 10  
 Students with Disabilities by Race  
 Compared with General Education Students by Race  
 December 1, 2001

	Grand Total	American Indian/ Alaskan Native		Asian/ Pacific Islander		African American		White		Hispanic	
		Total	Percent	Total	Percent	Total	Percent	Total	Percent	Total	Percent
Total SWD	111,551	417	0.4%	2,042	1.8%	44,379	39.8%	59,773	53.6%	4,940	4.4%
Total General Education	860,640	3,111	0.4%	39,401	4.6%	320,489	37.2%	451,388	52.4%	46,251	5.4%
Allegany SWD	1,892	9	0.5	6	0.3	81	4.3	1,793	94.8	3	0.2
General Education	10,180	24	0.2	70	0.7	348	3.4	9,709	95.4	29	0.3
Anne Arundel SWD	10,448	23	0.2	129	1.2	2,447	23.4	7,642	73.1	207	2.0
General Education	75,081	132	0.2	2,146	2.9	15,107	20.1	55,802	74.3	1,894	2.5
Baltimore City SWD	16,157	54	0.3	46	0.3	13,744	85.1	2,240	13.9	73	0.5
General Education	95,475	323	0.3	559	0.6	83,719	87.7	9,967	10.4	907	0.9
Edison Schools SWD	226	0	0.0	1	0.4	225	99.6	0	0.0	0	0.0
General Education	2,342	3	0.1	1	0.0	2,330	99.5	4	0.2	4	0.2
Baltimore SWD	13,313	91	0.7	188	1.4	4,467	33.6	8,347	62.7	220	1.7
General Education	107,212	585	0.5	4,300	4.0	36,160	33.7	64,018	59.7	2,149	2.0
Calvert SWD	2,183	7	0.3	18	0.8	518	23.7	1,624	74.4	16	0.7
General Education	16,651	23	0.1	157	0.9	2,608	15.7	13,694	82.2	169	1.0
Caroline SWD	714	0	0.0	0	0.0	190	26.6	517	72.4	7	1.0
General Education	5,609	5	0.1	48	0.9	1,069	19.1	4,345	77.5	142	2.5
Carroll SWD	3,732	12	0.3	34	0.9	138	3.7	3,512	94.1	36	1.0
General Education	28,127	53	0.2	311	1.1	680	2.4	26,833	95.4	250	0.9
Cecil SWD	2,606	2	0.1	5	0.2	180	6.9	2,385	91.5	34	1.3
General Education	16,095	40	0.2	115	0.7	1,021	6.3	14,644	91.0	275	1.7
Charles SWD	2,577	33	1.3	32	1.2	1,108	43.0	1,369	53.1	35	1.4
General Education	24,001	230	1.0	566	2.4	9,002	37.5	13,703	57.1	500	2.1
Dorchester SWD	642	3	0.5	6	0.9	329	51.2	297	46.3	7	1.1
General Education	4,884	9	0.2	47	1.0	2,064	42.3	2,699	55.3	65	1.3
Frederick SWD	4,537	4	0.1	52	1.1	567	12.5	3,808	83.9	106	2.3
General Education	38,022	72	0.2	900	2.4	3,445	9.1	32,518	85.5	1,087	2.9
Garrett SWD	743	0	0.0	1	0.1	8	1.1	734	98.8	0	0.0
General Education	4,869	0	0.0	5	0.1	15	0.3	4,845	99.5	4	0.1

\*General Education Number includes Students with Disabilities.

Table 10 continued  
 Students with Disabilities by Race  
 Compared with General Education Students by Race  
 December 1, 2001

	Grand Total	American Indian/ Alaskan Native		Asian/ Pacific Islander		African American		White		Hispanic	
		Total	Percent	Total	Percent	Total	Percent	Total	Percent	Total	Percent
Harford SWD	5,803	6	0.1	69	1.2	924	15.9	4,713	81.2	91	1.6
General Education	39,966	198	0.5	870	2.2	5,897	14.8	32,048	80.2	953	2.4
Howard SWD	4,830	10	0.2	195	4.0	1,116	23.1	3,377	69.9	132	2.7
General Education	46,257	81	0.2	4,796	10.4	8,234	17.8	31,789	68.7	1,357	2.9
Kent SWD	336	1	0.3	0	0.0	117	34.8	214	63.7	4	1.2
General Education	2,684	6	0.2	12	0.4	702	26.2	1,892	70.5	72	2.7
Montgomery SWD	16,471	51	0.3	970	5.9	4,357	26.5	8,186	49.7	2,907	17.6
General Education	136,895	414	0.3	19,057	13.9	28,935	21.1	64,935	47.4	23,554	17.2
Prince George's SWD	14,853	71	0.5	234	1.6	11,623	78.3	1,979	13.3	946	6.4
General Education	135,039	732	0.5	4,359	3.2	104,518	77.4	13,876	10.3	11,554	8.6
Queen Anne's SWD	1,026	3	0.3	4	0.4	153	14.9	864	84.2	2	0.2
General Education	7,232	17	0.2	57	0.8	740	10.2	6,369	88.1	49	0.7
St. Mary's SWD	2,121	19	0.9	19	0.9	515	24.3	1,545	72.8	23	1.1
General Education	15,482	85	0.5	335	2.2	2,910	18.8	11,870	76.7	282	1.8
Somerset SWD	375	2	0.5	3	0.8	160	42.7	206	54.9	4	1.1
General Education	3,060	4	0.1	29	0.9	1,406	45.9	1,571	51.3	50	1.6
Talbot SWD	474	2	0.4	3	0.6	164	34.6	295	62.2	10	2.1
General Education	4,516	10	0.2	58	1.3	1,078	23.9	3,259	72.2	111	2.5
Washington SWD	2,925	9	0.3	10	0.3	238	8.1	2,630	89.9	38	1.3
General Education	19,961	36	0.2	232	1.2	1,691	8.5	17,673	88.5	329	1.6
Wicomico SWD	1,679	4	0.2	16	1.0	683	40.7	948	56.5	28	1.7
General Education	14,116	17	0.1	321	2.3	5,036	35.7	8,397	59.5	345	2.4
Worcester SWD	888	1	0.1	1	0.1	327	36.8	548	61.7	11	1.2
General Education	6,884	12	0.2	50	0.7	1,774	25.8	4,928	71.6	120	1.7

\*General Education Number includes Students with Disabilities.

Table 11

Students with Disabilities by Race and Disability  
December 1, 2001

Race	Total	Mental Retardation		Hearing Impaired		Deaf		Speech/ Language		Visually Impaired		Emotion-ally Disturbed		Orthope-dically Impaired	
		Total	Percent	Total	Percent	Total	Percent	Total	Percent	Total	Percent	Total	Percent	Total	Percent
Total State	112,426	6,951	100.00%	703	100.00%	722	100.00%	29,820	100.00%	585	100.00%	9,301	100.00%	565	100.00%
American Indian	418	31	0.45%	4	0.57%	0	0.00%	89	0.30%	2	0.34%	47	0.51%	2	0.35%
Asian	2,053	125	1.80%	24	3.41%	33	4.57%	800	2.68%	23	3.93%	51	0.55%	12	2.12%
African American	44,720	4,240	61.00%	270	38.41%	169	23.41%	9,836	32.98%	241	41.20%	4,801	51.62%	254	44.96%
White	60,277	2,379	34.23%	376	53.49%	481	66.62%	17,521	58.76%	299	51.11%	4,217	45.34%	274	48.50%
Hispanic	4,958	176	2.53%	29	4.13%	39	5.40%	1,574	5.28%	20	3.42%	185	1.99%	23	4.07%

Table 11 (continued)

Students with Disabilities by Race and Disability  
December 1, 2001

Race	Health Impaired		Learning Disabilities		Multiple Disabilities		Deaf/ Blind		Autism		Traumatic Brain Injury		Develop-mental Delay	
	Total	Percent	Total	Percent	Total	Percent	Total	Percent	Total	Percent	Total	Percent	Total	Percent
Total State	8,698	100.00%	43,345	100.00%	26	100.00%	6,028	100.00%	2,823	100.00%	349	100.00%	2,510	100.00%
American Indian	29	0.33%	161	0.37%	0	0.00%	26	0.43%	12	0.43%	1	0.29%	14	0.56%
Asian	101	1.16%	452	1.04%	1	3.85%	197	3.27%	129	4.57%	11	3.15%	94	3.75%
African American	2,975	34.20%	17,229	39.75%	7	26.92%	2,380	39.48%	1,021	36.17%	152	43.55%	1,145	45.62%
White	5,406	62.15%	23,347	53.86%	16	61.54%	3,092	51.29%	1,578	55.90%	172	49.28%	1,119	44.58%
Hispanic	187	2.15%	2,156	4.97%	2	7.69%	333	5.52%	83	2.94%	13	3.72%	138	5.50%

Table 12

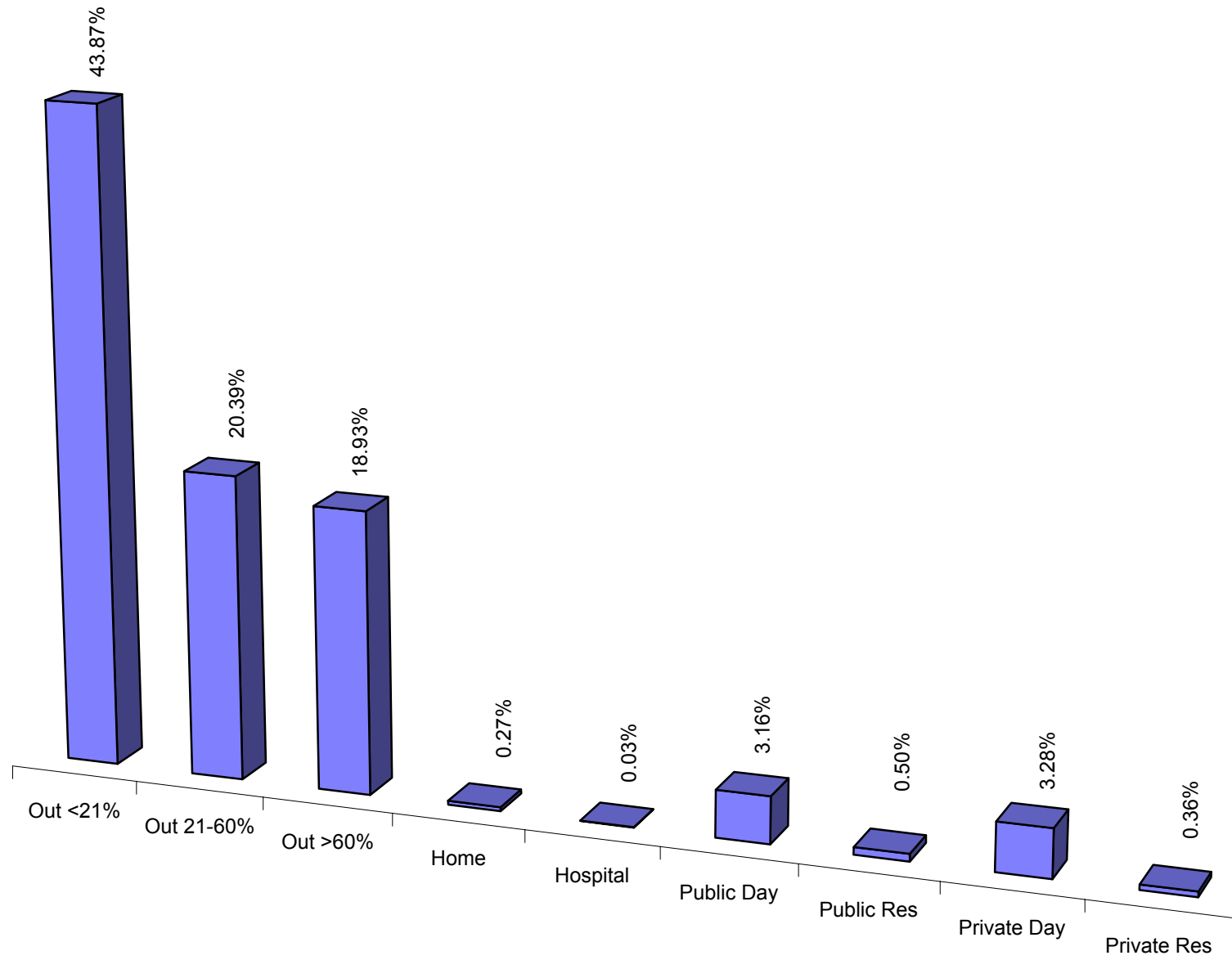
Students with Disabilities by Least Restrictive Environment  
December 1, 2001

	Total	Out < 21%		Out 21-60%		Out > 60%		Home		Hospital		Public				Private			
		Total	Percent	Total	Percent	Total	Percent	Total	Percent	Total	Percent	Day Prog		Residential		Day Prog		Residential	
												Total	Percent	Total	Percent	Total	Percent	Total	Percent
Total State	112,426	49,317	43.87%	22,919	20.39%	21,294	18.94%	298	0.27%	30	0.03%	3,555	3.16%	563	0.50%	3,688	3.28%	399	0.35%
Allegany	1,892	821	43.39%	732	38.69%	23	1.22%	4	0.21%	0	0.00%	50	2.64%	0	0.00%	23	1.22%	6	0.32%
Anne Arundel	10,448	5,527	52.90%	1,561	14.94%	1,459	13.96%	68	0.65%	2	0.02%	474	4.54%	5	0.05%	400	3.83%	18	0.17%
Baltimore City	16,157	4,768	29.50%	2,907	17.99%	5,451	33.73%	12	0.07%	1	0.01%	898	5.56%	3	0.02%	832	5.15%	24	0.15%
Edison Schools	226	105	46.46%	21	9.29%	87	38.50%	0	0.00%	0	0.00%	0	0.00%	0	0.00%	0	0.00%	0	0.00%
Baltimore	13,313	5,600	42.06%	2,078	15.61%	3,250	24.41%	4	0.03%	19	0.14%	525	3.94%	0	0.00%	359	2.70%	28	0.21%
Calvert	2,183	887	40.63%	641	29.36%	326	14.93%	17	0.78%	1	0.05%	69	3.16%	0	0.00%	47	2.15%	1	0.05%
Caroline	714	369	51.68%	208	29.13%	54	7.56%	4	0.56%	0	0.00%	0	0.00%	0	0.00%	1	0.14%	1	0.14%
Carroll	3,732	2,495	66.85%	519	13.91%	241	6.46%	9	0.24%	1	0.03%	63	1.69%	0	0.00%	88	2.36%	7	0.19%
Cecil	2,606	1,413	54.22%	540	20.72%	348	13.35%	10	0.38%	0	0.00%	3	0.12%	2	0.08%	27	1.04%	11	0.42%
Charles	2,577	1,214	47.11%	533	20.68%	466	18.08%	19	0.74%	0	0.00%	21	0.81%	4	0.16%	18	0.70%	15	0.58%
Dorchester	642	456	71.03%	55	8.57%	76	11.84%	1	0.16%	0	0.00%	0	0.00%	0	0.00%	0	0.00%	0	0.00%
Frederick	4,537	3,011	66.37%	685	15.10%	302	6.66%	29	0.64%	0	0.00%	128	2.82%	2	0.04%	26	0.57%	5	0.11%
Garrett	743	354	47.64%	202	27.19%	134	18.03%	2	0.27%	0	0.00%	0	0.00%	0	0.00%	0	0.00%	0	0.00%
Harford	5,803	2,380	41.01%	2,314	39.88%	249	4.29%	9	0.16%	0	0.00%	113	1.95%	2	0.03%	90	1.55%	26	0.45%
Howard	4,830	2,016	41.74%	1,596	33.04%	294	6.09%	4	0.08%	1	0.02%	131	2.71%	10	0.21%	99	2.05%	5	0.10%
Kent	336	187	55.65%	59	17.56%	68	20.24%	2	0.60%	0	0.00%	0	0.00%	0	0.00%	2	0.60%	0	0.00%
Montgomery	16,471	5,835	35.43%	3,101	18.83%	4,794	29.11%	35	0.21%	0	0.00%	522	3.17%	59	0.36%	623	3.78%	16	0.10%
Prince George's	14,853	5,857	39.43%	3,452	23.24%	2,813	18.94%	35	0.24%	0	0.00%	468	3.15%	18	0.12%	889	5.99%	87	0.59%
Queen Anne's	1,026	662	64.52%	208	20.27%	25	2.44%	4	0.39%	1	0.10%	2	0.19%	1	0.10%	11	1.07%	0	0.00%
St. Mary's	2,121	1,015	47.85%	631	29.75%	250	11.79%	4	0.19%	0	0.00%	2	0.09%	2	0.09%	6	0.28%	8	0.38%
Somerset	375	251	66.93%	49	13.07%	43	11.47%	2	0.53%	0	0.00%	3	0.80%	0	0.00%	0	0.00%	6	1.60%
Talbot	474	285	60.13%	101	21.31%	39	8.23%	6	1.27%	1	0.21%	0	0.00%	2	0.42%	0	0.00%	0	0.00%
Washington	2,925	2,021	69.09%	330	11.28%	144	4.92%	11	0.38%	0	0.00%	79	2.70%	0	0.00%	101	3.45%	12	0.41%
Wicomico	1,679	1,031	61.41%	190	11.32%	277	16.50%	5	0.30%	1	0.06%	1	0.06%	3	0.18%	5	0.30%	0	0.00%
Worcester	888	590	66.44%	139	15.65%	67	7.55%	0	0.00%	1	0.11%	1	0.11%	0	0.00%	0	0.00%	0	0.00%
Total Local Education Agencies	111,551	49,150	48.57%	22,852	20.49%	21,280	19.08%	296	0.27%	29	0.03%	3,553	3.19%	113	0.10%	3,647	3.27%	276	0.25%
Department of Juvenile Justice	179	147	82.12%	15	8.38%	11	6.15%	1	0.56%	1	0.56%	2	1.12%	1	0.56%	1	0.56%	0	0.00%
Cheltenham Detention Facility	18	4	22.22%	5	27.78%	3	16.67%	1	5.56%	1	5.56%	2	11.11%	1	5.56%	1	5.56%	0	0.00%
Cumberland Youth Services Ctr.	25	25	100.00%	0	0.00%	0	0.00%	0	0.00%	0	0.00%	0	0.00%	0	0.00%	0	0.00%	0	0.00%
Hickey School	28	28	100.00%	0	0.00%	0	0.00%	0	0.00%	0	0.00%	0	0.00%	0	0.00%	0	0.00%	0	0.00%
Noyse Children's Center	16	11	68.75%	3	18.75%	2	12.50%	0	0.00%	0	0.00%	0	0.00%	0	0.00%	0	0.00%	0	0.00%
Thomas JS Waxter Children's Ctr.	10	3	30.00%	7	70.00%	0	0.00%	0	0.00%	0	0.00%	0	0.00%	0	0.00%	0	0.00%	0	0.00%
Thomas O'Farrell	25	19	76.00%	0	0.00%	6	24.00%	0	0.00%	0	0.00%	0	0.00%	0	0.00%	0	0.00%	0	0.00%
Victor Cullen Academy	57	57	100.00%	0	0.00%	0	0.00%	0	0.00%	0	0.00%	0	0.00%	0	0.00%	0	0.00%	0	0.00%
Adult Corrections	72	19	26.39%	51	70.83%	2	2.78%	0	0.00%	0	0.00%	0	0.00%	0	0.00%	0	0.00%	0	0.00%
Maryland School for the Blind	175	1	0.57%	1	0.57%	1	0.57%	1	0.57%	0	0.00%	0	0.00%	0	0.00%	40	22.86%	123	70.29%
Maryland School for the Deaf	449	0	0.00%	0	0.00%	0	0.00%	0	0.00%	0	0.00%	0	0.00%	449	100.00%	0	0.00%	0	0.00%
Total State Operated Programs	875	167	21.58%	67	8.66%	14	1.81%	2	0.26%	1	0.13%	2	0.26%	450	58.14%	41	5.30%	123	15.89%

\*Percentages calculated on total number of 3-21 year olds.



Figure 3  
Students with Disabilities by LRE  
December 1, 2001

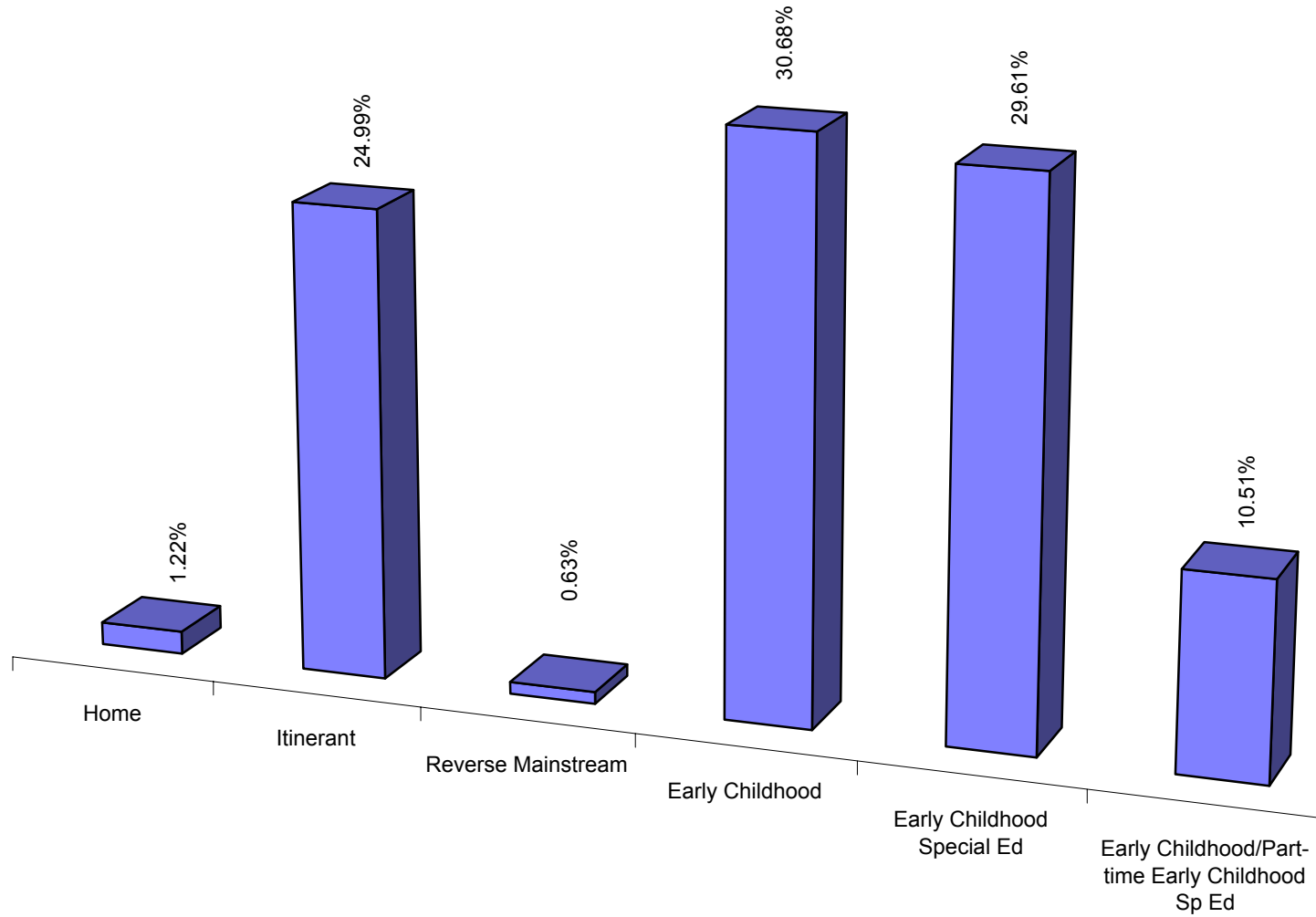


Preschool Students with Disabilities by Least Restrictive Environment  
December 1, 2001

	Home		Itinerant		Rev Main		Early Childhood		Early Childhood Special Ed		Combined	
	Total	Percent	Total	Percent	Total	Percent	Total	Percent	Total	Percent	Total	Percent
	Total State	129	1.22%	2,653	25.00%	67	0.63%	3,257	30.69%	3,142	29.60%	1,115
Allegany	0	0.00%	98	45.37%	0	0.00%	85	39.35%	25	11.57%	25	11.57%
Anne Arundel	10	1.01%	336	33.94%	8	0.81%	237	23.94%	270	27.27%	73	7.37%
Baltimore City	78	5.91%	359	27.20%	23	1.74%	467	35.38%	311	23.56%	23	1.74%
Edison Schools	0	0.00%	2	15.38%	0	0.00%	11	84.62%	0	0.00%	0	0.00%
Baltimore	0	0.00%	0	0.00%	0	0.00%	870	60.00%	505	34.83%	75	5.17%
Calvert	3	1.48%	41	20.20%	0	0.00%	83	40.89%	25	12.32%	42	20.69%
Caroline	0	0.00%	30	42.25%	0	0.00%	25	35.21%	18	25.35%	4	5.63%
Carroll	6	1.97%	127	41.64%	0	0.00%	80	26.23%	83	27.21%	13	4.26%
Cecil	0	0.00%	34	13.49%	0	0.00%	126	50.00%	92	36.51%	0	0.00%
Charles	3	1.05%	171	59.58%	4	1.39%	105	36.59%	3	1.05%	1	0.35%
Dorchester	1	1.89%	6	11.32%	0	0.00%	24	45.28%	19	35.85%	4	7.55%
Frederick	2	0.57%	151	42.78%	0	0.00%	139	39.38%	38	10.76%	19	5.38%
Garrett	0	0.00%	0	0.00%	0	0.00%	51	100.00%	0	0.00%	0	0.00%
Harford	10	1.60%	19	3.04%	0	0.00%	234	37.44%	187	29.92%	170	27.20%
Howard	3	0.45%	216	32.48%	19	2.86%	55	8.27%	277	41.65%	104	15.64%
Kent	0	0.00%	1	5.88%	12	70.59%	2	11.76%	0	0.00%	3	17.65%
Montgomery	5	0.32%	587	37.39%	0	0.00%	267	17.01%	598	38.09%	29	1.85%
Prince George's	5	0.39%	280	21.98%	0	0.00%	13	1.02%	566	44.43%	370	29.04%
Queen Anne's	0	0.00%	12	10.71%	0	0.00%	40	35.71%	17	15.18%	43	38.39%
St. Mary's	1	0.50%	25	12.44%	0	0.00%	90	44.78%	31	15.42%	56	27.86%
Somerset	0	0.00%	0	0.00%	0	0.00%	17	80.95%	4	19.05%	0	0.00%
Talbot	1	2.56%	0	0.00%	0	0.00%	38	97.44%	0	0.00%	1	2.56%
Washington	0	0.00%	37	16.23%	1	0.44%	156	68.42%	6	2.63%	27	11.84%
Wicomico	1	0.67%	93	62.42%	0	0.00%	19	12.75%	48	32.21%	5	3.36%
Worcester	0	0.00%	28	35.00%	0	0.00%	23	28.75%	12	15.00%	27	33.75%
Total Local Education Agencies	129	1.22%	2,653	25.16%	67	0.64%	3,257	30.89%	3,135	29.73%	1,114	10.56%
Department of Juvenile Justice	0	0.00%	0	0.00%	0	0.00%	0	0.00%	0	0.00%	0	0.00%
Cheltenham Detention Facility	0	0.00%	0	0.00%	0	0.00%	0	0.00%	0	0.00%	0	0.00%
Cumberland Youth Services Ctr.	0	0.00%	0	0.00%	0	0.00%	0	0.00%	0	0.00%	0	0.00%
Hickey School	0	0.00%	0	0.00%	0	0.00%	0	0.00%	0	0.00%	0	0.00%
Noyes Children's Center	0	0.00%	0	0.00%	0	0.00%	0	0.00%	0	0.00%	0	0.00%
Thomas JS Waxter Children's Ctr.	0	0.00%	0	0.00%	0	0.00%	0	0.00%	0	0.00%	0	0.00%
Thomas O'Farrell	0	0.00%	0	0.00%	0	0.00%	0	0.00%	0	0.00%	0	0.00%
Victor Cullen Academy	0	0.00%	0	0.00%	0	0.00%	0	0.00%	0	0.00%	0	0.00%
Adult Corrections	0	0.00%	0	0.00%	0	0.00%	0	0.00%	0	0.00%	0	0.00%
Maryland School for the Blind	0	0.00%	0	0.00%	0	0.00%	0	0.00%	7	53.85%	1	7.69%
Maryland School for the Deaf	0	0.00%	0	0.00%	0	0.00%	0	0.00%	0	0.00%	0	0.00%
Total State Operated Programs	0	0.00%	0	0.00%	0	0.00%	0	0.00%	7	10.14%	1	1.45%

\*Percentages calculated on total number of 3-5 year olds.

Figure 4b  
Students with Disabilities by Preschool LRE  
December 1, 2001



\*Percents are of the 3-5 Total only

Figure 5  
Students with Disabilities  
Trend by LRE Setting  
1995-2001

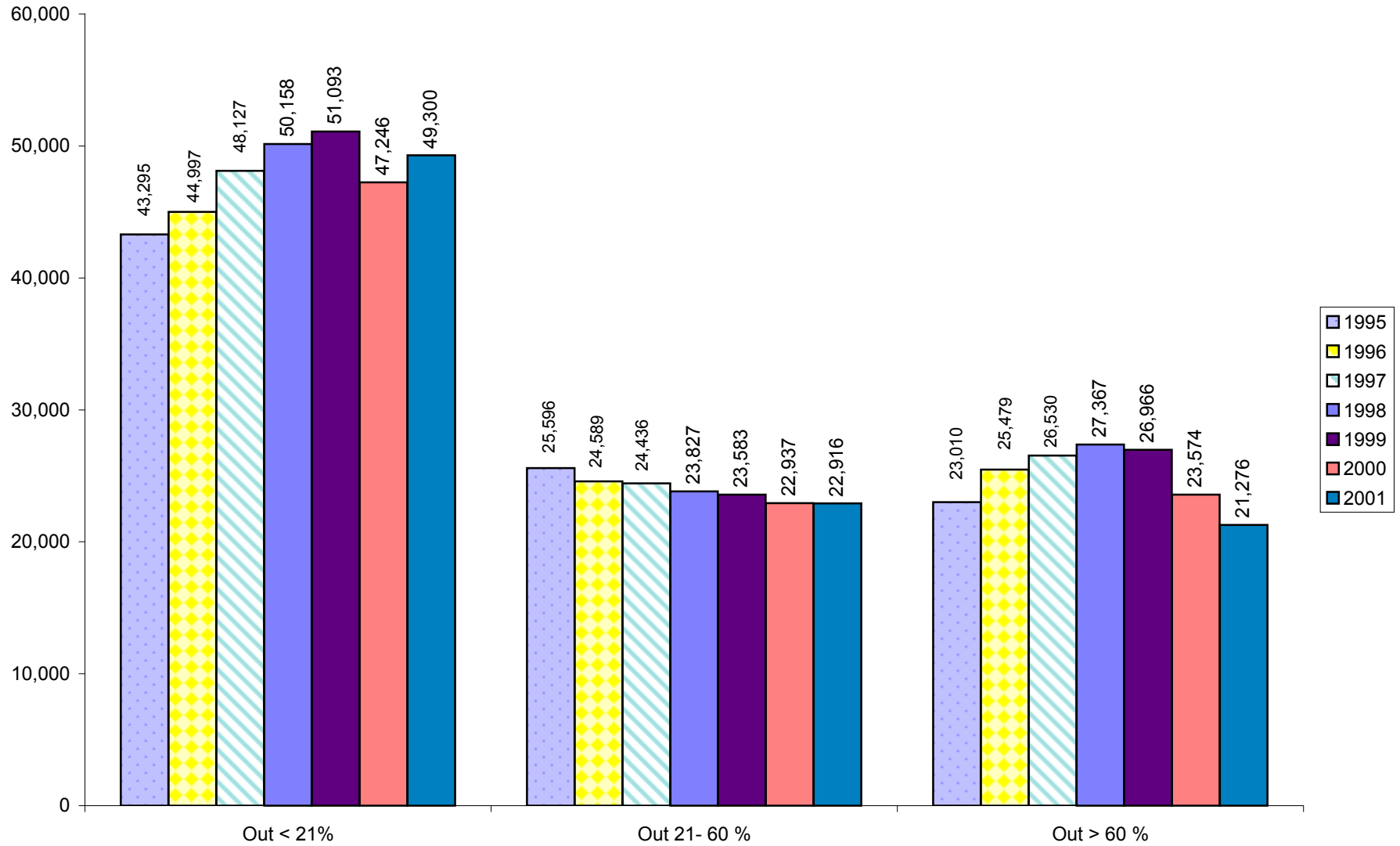


Table 13

Students with Disabilities Served in Home/Hospital  
December 1, 2001

	Total SWD	Home		Hospital	
		Number	Percent	Number	Percent
Total State	112,426	298	0.27%	30	0.03%
Alegany	1,892	4	0.21%	0	0.00%
Anne Arundel	10,448	68	0.65%	2	0.02%
Baltimore City	16,157	12	0.07%	1	0.01%
Edison Schools	226	0	0.00%	0	0.00%
Baltimore	13,313	4	0.03%	19	0.14%
Calvert	2,183	17	0.78%	1	0.05%
Caroline	714	4	0.56%	0	0.00%
Carroll	3,732	9	0.24%	1	0.03%
Cecil	2,606	10	0.38%	0	0.00%
Charles	2,577	19	0.74%	0	0.00%
Dorchester	642	1	0.16%	0	0.00%
Frederick	4,537	29	0.64%	0	0.00%
Garrett	743	2	0.27%	0	0.00%
Harford	5,803	9	0.16%	0	0.00%
Howard	4,830	4	0.08%	1	0.02%
Kent	336	2	0.60%	0	0.00%
Montgomery	16,471	35	0.21%	0	0.00%
Prince George's	14,853	35	0.24%	0	0.00%
Queen Anne's	1,026	4	0.39%	1	0.10%
St. Mary's	2,121	4	0.19%	0	0.00%
Somerset	375	2	0.53%	0	0.00%
Talbot	474	6	1.27%	1	0.21%
Washington	2,925	11	0.38%	0	0.00%
Wicomico	1,679	5	0.30%	1	0.06%
Worcester	888	0	0.00%	1	0.11%
Total Local Education Agencies	111,551	296	0.27%	29	0.03%
Department of Juvenile Justice	179	1	0.56%	1	0.56%
Cheltenham Detention Facility	18	1	5.56%	1	5.56%
Cumberland Youth Services Ctr.	25	0	0.00%	0	0.00%
Hickey School	28	0	0.00%	0	0.00%
Noyse Children's Center	16	0	0.00%	0	0.00%
Thomas JS Waxter Children's Ctr.	10	0	0.00%	0	0.00%
Thomas O'Farrell	25	0	0.00%	0	0.00%
Victor Cullen Academy	57	0	0.00%	0	0.00%
Adult Corrections	72	0	0.00%	0	0.00%
Maryland School for the Blind	175	1	0.57%	0	0.00%
Maryland School for the Deaf	449	0	0.00%	0	0.00%
Total State Operated Programs	875	2	0.26%	1	0.13%

Table 14

Students with Disabilities Trend by LRE  
1992 - 2001

	1992	1993	1994	1995	1996	1997	1998	1999	2000	2001
Total all LRE	91,813	94,999	96,779	100,863	104,630	109,084	111,688	111,711	112,078	112,426
Out < 21% (A)	43,458	46,384	47,506	43,295	44,997	48,127	50,158	51,093	47,246	49,300
Out 21- 60% (B)	16,993	17,824	18,772	25,596	24,589	24,436	23,827	23,583	22,937	22,916
Out > 60% (C)	23,551	23,528	23,578	23,010	25,479	26,530	27,367	26,966	23,574	21,276
Itinerant (L)	NA	NA	NA	NA	NA	NA	NA	NA	2,513	2,652
Early Childhood Special Ed (N)	NA	NA	NA	NA	NA	NA	NA	NA	2,326	3,144
Combined (O)	NA	NA	NA	NA	NA	NA	NA	NA	1,871	1,115

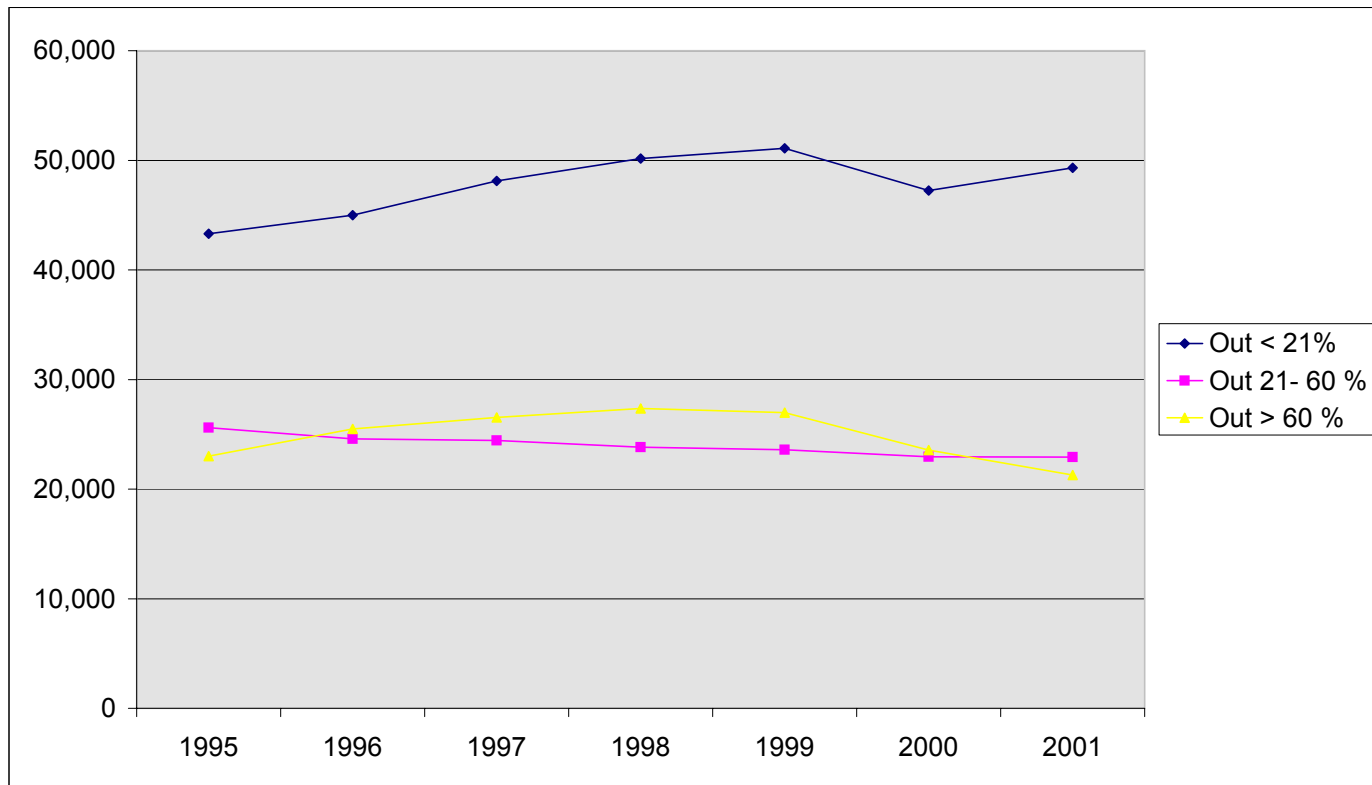


Table 15  
 Students with Disabilities by Race and LRE  
 December 1, 2001

	Out < 21%		Out 21-60%		Out > 60%		Home		Hospital		Public				Private			
											Day Prog		Residential		Day Prog		Residential	
	Total	Percent	Total	Percent	Total	Percent	Total	Percent	Total	Percent	Total	Percent	Total	Percent	Total	Percent	Total	Percent
Total State	112,426	43.87%	22,919	20.39%	21,294	18.94%	298	0.27%	30	0.03%	3,555	3.16%	561	0.50%	3,688	3.28%	401	0.36%
American Indian/Alaskan Native	418	43.30%	75	17.94%	86	20.57%	1	0.24%	0	0.00%	14	3.35%	0	0.00%	16	3.83%	2	0.48%
Asian	2,053	40.53%	351	17.10%	439	21.38%	4	0.19%	0	0.00%	66	3.21%	9	0.44%	63	3.07%	7	0.34%
African American	44,720	35.28%	9,844	22.01%	11,956	26.74%	88	0.20%	14	0.03%	1,791	4.00%	137	0.31%	1,709	3.82%	160	0.36%
White	60,277	51.04%	11,460	19.01%	7,453	12.36%	199	0.33%	16	0.03%	1,565	2.60%	400	0.66%	1,824	3.03%	224	0.37%
Hispanic	4,958	35.52%	1,189	23.98%	1,360	27.43%	6	0.12%	0	0.00%	119	2.40%	15	0.30%	76	1.53%	8	0.16%

Preschool Race and LRE

	Home		Itinerant		Reverse Mainstream		Early Childhood		Early Childhood Special Ed		Combined	
	Total	Percent	Total	Percent	Total	Percent	Total	Percent	Total	Percent	Total	Percent
Total State	129	30.86%	2,653	2.36%	55	0.05%	3,267	2.91%	3,144	2.80%	1,115	0.99%
American Indian/Alaskan Native	1	0.24%	8	1.91%	0	0.00%	16	3.83%	14	3.35%	4	0.96%
Asian	5	0.24%	63	3.07%	3	0.15%	49	2.39%	133	6.48%	29	1.41%
African American	58	0.13%	673	1.50%	24	0.05%	842	1.88%	1,225	2.74%	421	0.94%
White	64	0.11%	1,809	3.00%	26	0.04%	2,275	3.77%	1,584	2.63%	613	1.02%
Hispanic	1	0.02%	100	2.02%	2	0.04%	85	1.71%	188	3.79%	48	0.97%

Table 16

\*Number and Percent of Students with Disabilities by ESY Service  
December 1, 2001

	Grand Total	ESY	
		Total	Percent
Total State	112,426	7,433	6.6%
Allegany	1,892	145	7.7
Anne Arundel	10,448	602	5.8
Baltimore City	16,157	499	3.1
Edison Schools	226	12	5.3
Baltimore	13,313	626	4.7
Calvert	2,183	26	1.2
Caroline	714	4	0.6
Carroll	3,732	181	4.8
Cecil	2,606	99	3.8
Charles	2,577	96	3.7
Dorchester	642	4	0.6
Frederick	4,537	417	9.2
Garrett	743	14	1.9
Harford	5,803	180	3.1
Howard	4,830	684	14.2
Kent	336	23	6.8
Montgomery	16,471	1,318	8.0
Prince George's	14,853	1,834	12.3
Queen Anne's	1,026	62	6.0
St. Mary's	2,121	103	4.9
Somerset	375	4	1.1
Talbot	474	0	0.0
Washington	2,925	374	12.8
Wicomico	1,679	27	1.6
Worcester	888	6	0.7
Total Local Education Agencies	111,551	7,340	6.6
Department of Juvenile Justice	179	0	0.0
Adult Corrections	72	0	0.0
Maryland School for the Blind	175	92	52.6
Maryland School for the Deaf	449	1	0.2
Total State Operated Programs	875	93	10.6

\*Data may not reflect actual numbers or data may be incomplete. MSDE is working with local agencies to improve the accuracy of the data.



Table 17

\*Number and Percent of Students with Disabilities Placed by Their Parents in Private Schools  
December 1, 2001

	Total SWD	Parent Placed		Receiving					
				Special Education Service		*Only Related Service		*No Service	
				Total	Percent	Total	Percent	Total	Percent
Total State	111,551	699	0.6%	699	0.6%	0	0.0%	0	0.0%
Allegany	1,892	0	0.0%	0	0.0%	0	0.0%	0	0.0%
Anne Arundel	10,448	167	1.6%	167	1.6%	0	0.0%	0	0.0%
Baltimore City	16,157	34	0.2%	34	0.2%	0	0.0%	0	0.0%
Edison Schools	226	0	0.0%	0	0.0%	0	0.0%	0	0.0%
Baltimore	13,313	0	0.0%	0	0.0%	0	0.0%	0	0.0%
Calvert	2,183	13	0.6%	13	0.6%	0	0.0%	0	0.0%
Caroline	714	2	0.3%	2	0.3%	0	0.0%	0	0.0%
Carroll	3,732	2	0.1%	2	0.1%	0	0.0%	0	0.0%
Cecil	2,606	15	0.6%	15	0.6%	0	0.0%	0	0.0%
Charles	2,577	0	0.0%	0	0.0%	0	0.0%	0	0.0%
Dorchester	642	0	0.0%	0	0.0%	0	0.0%	0	0.0%
Frederick	4,537	19	0.4%	19	0.4%	0	0.0%	0	0.0%
Garrett	743	0	0.0%	0	0.0%	0	0.0%	0	0.0%
Harford	5,803	46	0.8%	46	0.8%	0	0.0%	0	0.0%
Howard	4,830	2	0.0%	2	0.0%	0	0.0%	0	0.0%
Kent	336	3	0.9%	3	0.9%	0	0.0%	0	0.0%
Montgomery	16,471	329	2.0%	329	2.0%	0	0.0%	0	0.0%
Prince George's	14,853	61	0.4%	61	0.4%	0	0.0%	0	0.0%
Queen Anne's	1,026	0	0.0%	0	0.0%	0	0.0%	0	0.0%
St. Mary's	2,121	0	0.0%	0	0.0%	0	0.0%	0	0.0%
Somerset	375	0	0.0%	0	0.0%	0	0.0%	0	0.0%
Talbot	474	0	0.0%	0	0.0%	0	0.0%	0	0.0%
Washington	2,925	1	0.0%	1	0.0%	0	0.0%	0	0.0%
Wicomico	1,679	2	0.1%	2	0.1%	0	0.0%	0	0.0%
Worcester	888	3	0.3%	3	0.3%	0	0.0%	0	0.0%

\*Data may not reflect actual numbers or data may be incomplete. MSDE is working with local agencies to improve the accuracy of the data.

Table 18

\*Number and Percent of Students with Disabilities with IEPs Older than 13 Months and Evaluations Which Need to be Updated  
December 1, 2001

	Grand	IEPs Older than 13 Months		Evaluations Which Need to be Updated	
	Total	Total	Percent	Total	Percent
Total State	112,426	1,814	1.6%	6,109	5.4%
Allegany	1,892	9	0.5	28	1.5
Anne Arundel	10,448	412	3.9	299	2.9
Baltimore City	16,157	0	0.0	0	0.0
Edison Schools	226	0	0.0	0	0.0
Baltimore	13,313	0	0.0	69	0.5
Calvert	2,183	2	0.1	12	0.5
Caroline	714	0	0.0	0	0.0
Carroll	3,732	53	1.4	115	3.1
Cecil	2,606	10	0.4	77	3.0
Charles	2,577	17	0.7	340	13.2
Dorchester	642	3	0.5	46	7.2
Frederick	4,537	1	0.0	0	0.0
Garrett	743	6	0.8	45	6.1
Harford	5,803	5	0.1	10	0.2
Howard	4,830	61	1.3	27	0.6
Kent	336	0	0.0	0	0.0
Montgomery	16,471	0	0.0	3,555	21.6
Prince George's	14,853	1,111	7.5	1,334	9.0
Queen Anne's	1,026	48	4.7	33	3.2
St. Mary's	2,121	3	0.1	8	0.4
Somerset	375	5	1.3	6	1.6
Talbot	474	2	0.4	4	0.8
Washington	2,925	52	1.8	41	1.4
Wicomico	1,679	10	0.6	17	1.0
Worcester	888	0	0.0	26	2.9
Total Local Education Agencies	111,551	1,810	1.6	6,092	5.5
Department of Juvenile Justice	179	17	9.5	4	2.2
Adult Corrections	72	1	1.4	3	4.2
Maryland School for the Blind	175	3	1.7	14	8.0
Maryland School for the Deaf	449	0	0.0	0	0.0
Total State Operated Programs	875	4	0.5	17	1.9

\*Data may not reflect actual numbers or data may be incomplete. MSDE is working with local agencies to improve the accuracy of the data.

# MARYLAND SPECIAL EDUCATION EXIT DATA

JULY 1, 2000 - JUNE 30, 2001

Table 19  
 Students with Disabilities by Exit Reason and LEA  
 Age 14 - 21  
 July 2000 - June 2001

	Total	Returned to		Graduated				Reached Maximum		Deceased		Transferred		Dropped Out	
		General Ed	Percent	Diploma	Percent	Certificate	Percent	Age	Percent		Percent		Percent		Percent
Total State	9,258	1,266	13.7%	3,353	36.2%	363	3.9%	120	1.3%	26	0.3%	2,709	29.3%	1,421	15.3%
Allegany	165	13	7.9%	68	41.2%	13	7.9%	0	0.0%	0	0.0%	44	26.7%	27	16.4%
Anne Arundel	1,038	142	13.7%	374	36.0%	27	2.6%	19	1.8%	2	0.2%	233	22.4%	241	23.2%
Baltimore City	1,564	246	15.7%	300	19.2%	50	3.2%	34	2.2%	8	0.5%	512	32.7%	414	26.5%
Edison Schools	0	0	0.0%	0	0.0%	0	0.0%	0	0.0%	0	0.0%	0	0.0%	0	0.0%
Baltimore	1,044	106	10.2%	500	47.9%	19	1.8%	0	0.0%	1	0.1%	319	30.6%	99	9.5%
Calvert	204	63	30.9%	51	25.0%	2	1.0%	1	0.5%	1	0.5%	44	21.6%	42	20.6%
Caroline	72	12	16.7%	29	40.3%	3	4.2%	3	4.2%	0	0.0%	12	16.7%	13	18.1%
Carroll	295	51	17.3%	133	45.1%	12	4.1%	5	1.7%	1	0.3%	47	15.9%	46	15.6%
Cecil	212	16	7.5%	67	31.6%	13	6.1%	3	1.4%	2	0.9%	56	26.4%	55	25.9%
Charles	362	84	23.2%	106	29.3%	14	3.9%	2	0.6%	1	0.3%	99	27.3%	56	15.5%
Dorchester	51	7	13.7%	13	25.5%	8	15.7%	0	0.0%	0	0.0%	14	27.5%	9	17.6%
Frederick	386	82	21.2%	191	49.5%	12	3.1%	0	0.0%	0	0.0%	94	24.4%	7	1.8%
Garrett	72	10	13.9%	19	26.4%	3	4.2%	0	0.0%	2	2.8%	16	22.2%	22	30.6%
Harford	247	24	9.7%	127	51.4%	10	4.0%	2	0.8%	0	0.0%	50	20.2%	34	13.8%
Howard	429	61	14.2%	206	48.0%	12	2.8%	5	1.2%	2	0.5%	111	25.9%	32	7.5%
Kent	34	1	2.9%	15	44.1%	1	2.9%	1	2.9%	0	0.0%	7	20.6%	9	26.5%
Montgomery	1,273	179	14.1%	626	49.2%	64	5.0%	24	1.9%	2	0.2%	339	26.6%	39	3.1%
Prince George's	595	50	8.4%	179	30.1%	30	5.0%	0	0.0%	2	0.3%	241	40.5%	93	15.6%
Queen Anne's	80	18	22.5%	15	18.8%	2	2.5%	0	0.0%	0	0.0%	27	33.8%	18	22.5%
St. Mary's	167	28	16.8%	66	39.5%	6	3.6%	0	0.0%	0	0.0%	39	23.4%	28	16.8%
Somerset	49	4	8.2%	13	26.5%	3	6.1%	1	2.0%	0	0.0%	19	38.8%	9	18.4%
Talbot	56	3	5.4%	10	17.9%	13	23.2%	1	1.8%	0	0.0%	15	26.8%	14	25.0%
Washington	268	34	12.7%	122	45.5%	18	6.7%	1	0.4%	0	0.0%	39	14.6%	54	20.1%
Wicomico	181	18	9.9%	48	26.5%	11	6.1%	0	0.0%	0	0.0%	57	31.5%	47	26.0%
Worcester	72	6	8.3%	36	50.0%	4	5.6%	1	1.4%	0	0.0%	19	26.4%	6	8.3%
Total Local Education Agencies	8,916	1,258	14.1%	3,314	37.2%	350	3.9%	103	1.2%	24	0.3%	2,453	27.5%	1,414	15.9%
Department of Juvenile Justice	216	2	0.9%	2	0.9%	0	0.0%	0	0.0%	0	0.0%	211	97.7%	1	0.5%
Adult Corrections	53	0	0.0%	5	9.4%	0	0.0%	17	32.1%	1	1.9%	27	50.9%	3	5.7%
Maryland School for the Blind	16	1	6.3%	0	0.0%	13	81.3%	0	0.0%	1	6.3%	0	0.0%	1	6.3%
Maryland School for the Deaf	57	5	8.8%	32	56.1%	0	0.0%	0	0.0%	0	0.0%	18	31.6%	2	3.5%
Total State Operated Programs	342	8	2.3%	39	11.4%	13	3.8%	17	5.0%	2	0.6%	256	74.9%	7	2.0%

Figure 6  
Students with Disabilities  
by Exit Reason  
July 2000- June 2001

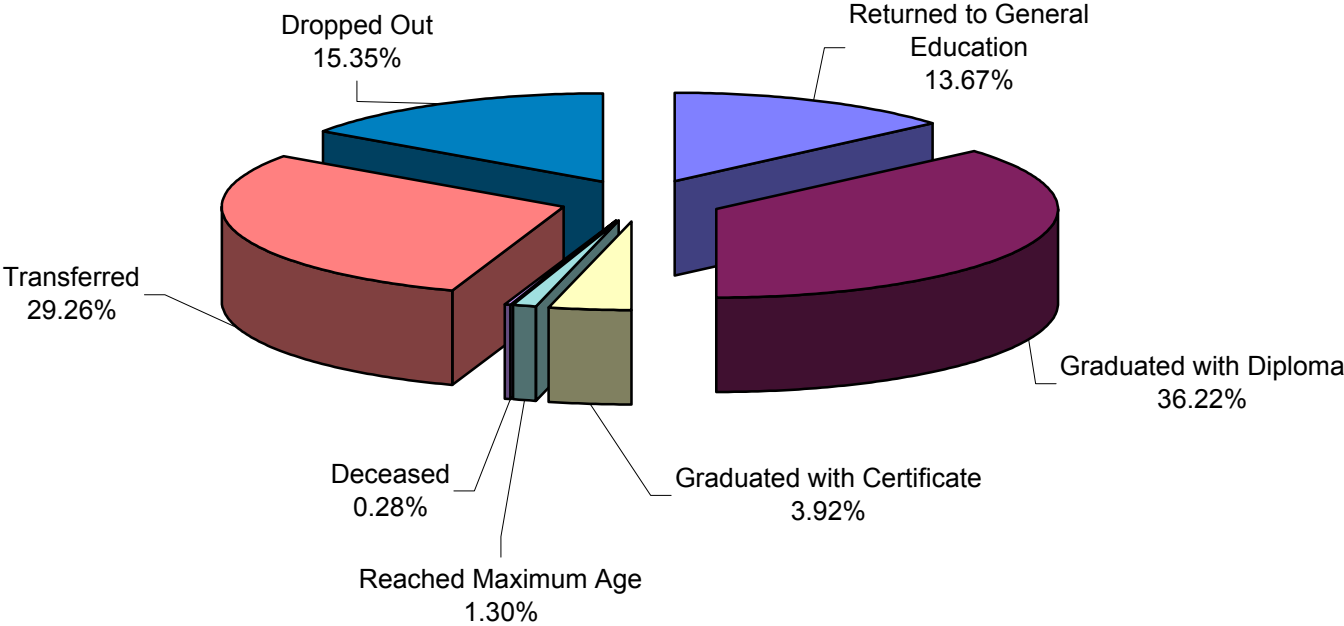


Table 20  
 Students with Disabilities by Exit Reason and Disability  
 Age 14 - 21  
 July 2000 - June 2001

	Total	Returned to General Ed	Graduated		Reached Maximum Age	Deceased	Transferred	Dropped Out
			Diploma	Certificate				
Total State	9,258	1,266	3,353	363	120	26	2,709	1,421
Mentally Retarded	623	19	123	145	45	1	182	108
Hearing Impaired	48	7	24	0	0	0	9	8
Deaf	75	6	41	2	0	0	24	2
Speech/Language	715	277	236	11	0	1	141	49
Visually Impaired	41	2	17	11	0	1	3	7
Emotionally Disturbed	1,622	113	380	44	13	5	714	353
Orthopedically Impaired	22	2	13	1	0	1	5	0
Other Health Impaired	476	73	212	7	2	0	135	47
Specific Learning Disability	5,136	747	2,156	70	14	11	1,345	793
Deaf/Blind	4	0	0	3	0	0	1	0
Multiple Handicap	395	12	116	61	38	6	115	47
Autism	52	4	18	7	5	0	16	2
Traumatic Brain Injury	49	4	17	1	3	0	19	5
Developmental Delay	0	0	0	0	0	0	0	0

# Maryland Students with Disabilities Suspension Data

Table 21  
 Extended Suspensions - Greater Than Ten Days  
 Maryland Public Schools  
 2000-2001

Local Education Agency	All Students				Students With Disabilities			Students Without Disabilities		
	Total 09/30/00 Enrollment	Number	Percent	Totals Diffs	12/1/2000 SSIS Count	Number	Percent	Total 09/30/00 Enrollment	Number	Percent
Total State	852,920	3,767	0.44%	0	111,102	899	0.81%	741,818	2,868	0.39%
Allegany	10,416	5	0.05%	0	1,888	0	0.00%	8,528	5	0.06%
Anne Arundel	74,491	316	0.42%	0	10,072	136	1.35%	64,419	180	0.28%
Baltimore City	98,226	603	0.61%	0	16,679	167	1.00%	81,547	436	0.53%
Edison Schools	1,633	4	0.24%	0	177	0	0.00%	1,456	4	0.27%
Baltimore	106,898	1,117	1.04%	0	13,260	244	1.84%	93,638	873	0.93%
Calvert	16,170	1	0.01%	0	2,159	0	0.00%	14,011	1	0.01%
Caroline	5,557	0	0.00%	0	777	0	0.00%	4,780	0	0.00%
Carroll	27,528	0	0.00%	0	3,763	0	0.00%	23,765	0	0.00%
Cecil	15,905	48	0.30%	0	2,558	4	0.16%	13,347	44	0.33%
Charles	23,468	58	0.25%	0	2,671	21	0.79%	20,797	37	0.18%
Dorchester	4,869	39	0.80%	0	625	9	1.44%	4,244	30	0.71%
Frederick	36,885	25	0.07%	0	4,466	7	0.16%	32,419	18	0.06%
Garrett	4,946	0	0.00%	0	789	0	0.00%	4,157	0	0.00%
Harford	39,520	321	0.81%	0	5,678	100	1.76%	33,842	221	0.65%
Howard	44,946	116	0.26%	0	4,653	25	0.54%	40,293	91	0.23%
Kent	2,795	6	0.21%	0	347	0	0.00%	2,448	6	0.25%
Montgomery	134,180	198	0.15%	0	16,359	21	0.13%	117,821	177	0.15%
Prince George's	133,723	825	0.62%	0	14,623	150	1.03%	119,100	675	0.57%
Queen Anne's	7,217	19	0.26%	0	1,010	1	0.10%	6,207	18	0.29%
St. Mary's	15,151	3	0.02%	0	2,073	0	0.00%	13,078	3	0.02%
Somerset	3,063	0	0.00%	0	396	0	0.00%	2,667	0	0.00%
Talbot	4,521	4	0.09%	0	504	0	0.00%	4,017	4	0.10%
Washington	19,782	56	0.28%	0	2,969	14	0.47%	16,813	42	0.25%
Wicomico	14,138	3	0.02%	0	1,704	0	0.00%	12,434	3	0.02%
Worcester	6,892	0	0.00%	0	902	0	0.00%	5,990	0	0.00%

Sources: Maryland Enrollment Data, September 30, 2000; Maryland Special Education Census Data, December 1, 2000

Disabled and non-disabled counts may not equal total students because students could have been counted in both columns, depending on their special education status when suspended.

\*MSDE Special Education Defined Criteria



Table 22  
 Multiple Suspensions - Summing to Greater Than Ten Days  
 Maryland Public Schools  
 2000-2001

Local Education Agency	All Students				Students With Disabilities			Students Without Disabilities		
	Total 09/30/00 Enrollment	Number	Percent	Totals Diffs	12/1/2000 SSIS Count	Number	Percent	Total 09/30/00 Enrollment	Number	Percent
Total State	852,920	6379	0.75%	-20	111,102	1492	1.34%	741,818	4907	0.66%
Allegany	10,416	72	0.69%	0	1,888	28	1.48%	8,528	44	0.52%
Anne Arundel	74,491	403	0.54%	0	10,072	89	0.88%	64,419	314	0.49%
Baltimore City	98,226	1604	1.63%	-12	16,679	378	2.27%	81,547	1238	1.52%
Edison Schools	1,633	18	1.10%	0	177	0	0.00%	1,456	18	1.24%
Baltimore	106,898	413	0.39%	0	13,260	66	0.50%	93,638	347	0.37%
Calvert	16,170	115	0.71%	0	2,159	25	1.16%	14,011	90	0.64%
Caroline	5,557	80	1.44%	-1	777	31	3.99%	4,780	50	1.05%
Carroll	27,528	98	0.36%	0	3,763	37	0.98%	23,765	61	0.26%
Cecil	15,905	222	1.40%	0	2,558	8	0.31%	13,347	214	1.60%
Charles	23,468	146	0.62%	0	2,671	34	1.27%	20,797	112	0.54%
Dorchester	4,869	112	2.30%	0	625	26	4.16%	4,244	86	2.03%
Frederick	36,885	282	0.76%	0	4,466	123	2.75%	32,419	159	0.49%
Garrett	4,946	9	0.18%	0	789	4	0.51%	4,157	5	0.12%
Harford	39,520	470	1.19%	-1	5,678	176	3.10%	33,842	295	0.87%
Howard	44,946	134	0.30%	0	4,653	20	0.43%	40,293	114	0.28%
Kent	2,795	33	1.18%	0	347	1	0.29%	2,448	32	1.31%
Montgomery	134,180	287	0.21%	-5	16,359	90	0.55%	117,821	202	0.17%
Prince George's	133,723	1058	0.79%	0	14,623	214	1.46%	119,100	844	0.71%
Queen Anne's	7,217	40	0.55%	0	1,010	13	1.29%	6,207	27	0.43%
St. Mary's	15,151	238	1.57%	0	2,073	31	1.50%	13,078	207	1.58%
Somerset	3,063	81	2.64%	0	396	12	3.03%	2,667	69	2.59%
Talbot	4,521	37	0.82%	0	504	9	1.79%	4,017	28	0.70%
Washington	19,782	34	0.17%	0	2,969	5	0.17%	16,813	29	0.17%
Wicomico	14,138	333	2.36%	-1	1,704	66	3.87%	12,434	268	2.16%
Worcester	6,892	60	0.87%	0	902	6	0.67%	5,990	54	0.90%

MARYLAND INFANTS AND TODDLERS PROGRAM  
PART C DATA

as of 12/1/2001

Table 23  
Part C Child Report  
as of 12/1/01

Jurisdiction	Total # of Children Receiving Early Intervention Services as of 12/1/01				Total # of Children Receiving Early Intervention Services Annually	Total # of Children Referred to Local Infants & Toddlers Programs Annually
	Birth to One	One to Two	Two to Three	Total Snapshot (as of 12/1/01)	Annual Count (from 12/1/00 to 12/1/01)	Referral Count (from 12/1/00 to 12/1/01)
Total State	563	1,479	2,858	4,900	8,447	8,746
Allegany	20	27	38	85	134	125
Anne Arundel	27	117	308	452	850	774
Baltimore City	138	256	440	834	1,324	1,167
Baltimore	69	207	446	722	1,131	1,658
Calvert	5	14	41	60	81	91
Caroline	5	8	15	28	43	60
Carroll	19	36	59	114	207	252
Cecil	12	17	33	62	94	107
Charles	10	21	51	82	123	114
Dorchester	6	14	18	38	68	47
Frederick	21	64	108	193	368	328
Garrett	0	10	8	18	27	47
Harford	25	61	153	239	517	470
Howard	25	55	158	238	469	607
Kent	0	1	3	4	8	24
Montgomery	79	269	520	868	1,480	1,415
Prince George's	49	185	277	511	951	827
Queen Anne's	1	7	21	29	42	70
Somerset	1	4	2	7	13	15
St. Mary's	10	31	43	84	127	120
Talbot	5	6	9	20	27	47
Washington	17	40	49	106	185	199
Wicomico	18	23	45	86	147	139
Worcester	1	6	13	20	31	43

Figure 7  
Part C Eligibility for 12/1/01

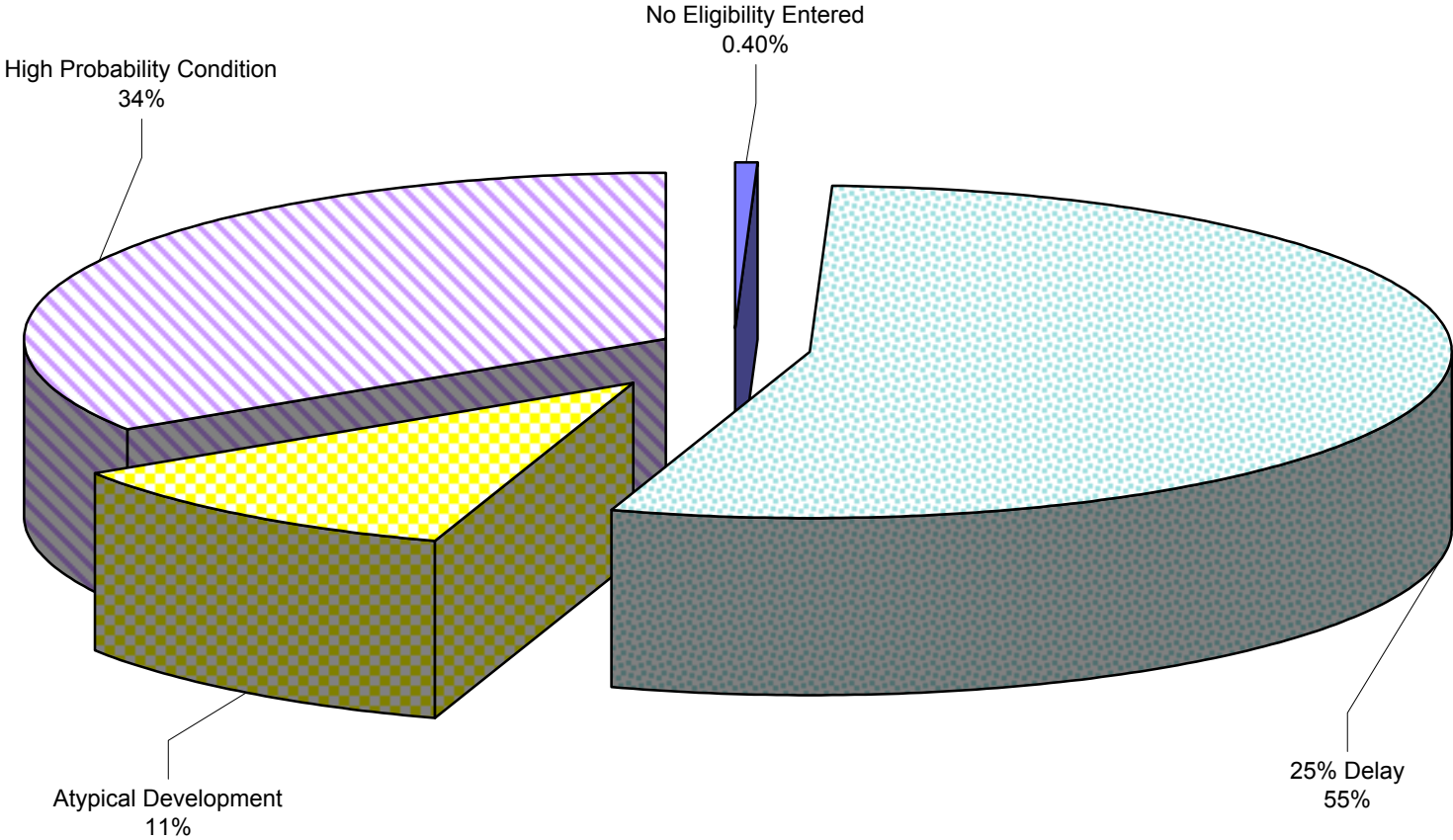


Table 24  
Part C Transition Report as of 12/1/01

Jurisdiction	All Children who Transitioned at age 3	With IEP Meeting Date Entered	Part B Eligible	With IEP Meeting Date Entered	Part B Eligible with Referrals	Not Part B Eligible	With IEP Meeting Date Entered	Not Part B Eligible with Referrals
Statewide Total	2,598	2,263	2,022	2,022	740	576	241	149
Percent of Total		87.11%	77.83%	100.00%	36.60%	22.17%	41.84%	25.87%
Allegany	48	41	26	26	17	22	15	7
Anne Arundel	269	268	267	267	9	2	1	1
Baltimore City	368	326	266	266	176	102	60	29
Baltimore County	298	232	211	211	73	87	21	14
Calvert	31	29	23	23	19	8	6	5
Caroline	10	7	5	5	4	5	2	1
Carroll	71	66	63	63	43	8	3	25
Cecil	34	31	27	27	18	7	4	4
Charles	43	42	41	41	0	2	1	1
Dorchester	16	16	16	16	6	0	0	0
Frederick	91	75	50	50	20	41	25	6
Garrett	5	5	4	4	3	1	1	0
Harford	176	174	160	160	39	16	14	12
Howard	162	158	157	157	61	5	1	1
Kent	2	2	2	2	2	0	0	0
Montgomery	489	484	426	426	83	63	58	22
Prince George's	300	136	130	130	55	170	6	2
Queen Anne's	22	17	13	13	13	9	4	2
Somerset	10	6	5	5	3	5	1	1
St. Mary's	33	31	30	30	2	3	1	1
Talbot	14	13	9	9	9	5	4	3
Washington	59	58	52	52	50	7	6	5
Wicomico	37	36	31	31	28	6	5	5
Worcester	10	10	8	8	7	2	2	2