



Maryland Special Education/ Early Intervention Services Census Data & Related Tables

December 1, 2002

Revised 4/15/03

Maryland State Department of Education
Division of Planning, Results, and Information Management
200 West Baltimore Street
Baltimore, MD 21201-2595
(410) 767-0073

MSDE-PRIM 04100(R)003 3/03

MARYLAND STATE BOARD OF EDUCATION

Marilyn D. Maultsby
President

Jo Ann T. Bell
Vice President

Philip S. Benzil
Dunbar Brooks
Clarence A. Hawkins
Walter S. Levin
Karabelle Pizzigati
Edward L. Root
Walter Sondheim, Jr.
John L. Wisthoff
Caroline Gifford (*Student Member*)

Nancy S. Grasmick
Secretary-Treasurer of the Board
State Superintendent of Schools

A. Skipp Sanders
Deputy State Superintendent for Administration

Richard J. Steinke
Deputy State Superintendent for School Improvement

Gary Heath
Acting Assistant State Superintendent
Division of Planning, Results, and Information Management

The Maryland State Department of Education does not discriminate on the basis of race, color, sex, age, national origin, religion, or disability in matters affecting employment or in providing access to programs. For inquiries related to departmental policy, please contact the Equity Assurance and Compliance Branch, Maryland State Department of Education, 200 West Baltimore Street, Baltimore, MD 21201, (410) 767-0433 - Voice, (410) 333-6442 - TTY/TDD, (410) 333-2226 - Fax.

**Maryland Special Education/Early Intervention Services
 Census Data & Related Tables
 December 1, 2002
 REVISED APRIL 15, 2003**

Table of Contents

Introduction

Definitions

Table	Page
1	Students with Disabilities as Percent of September Enrollment 1
2	Students with Disabilities by Disability 2
3	Students with Disabilities Trend in High Growth Disabilities 5
4	Students with Disabilities by Age 7
5	Students with Disabilities by Age and Disability 8
6	Students with Disabilities by Grade 9
7	Students with Disabilities by Grade and Disability 11
8	Students with Disabilities by Gender 13
9	Students with Disabilities by Race 14
10	Students with Disabilities Compared with General Education Students by Race 15
11	Students with Disabilities by Race and Disability 17
12	Students with Disabilities by Least Restrictive Environment Ages 3-21 18
12	Students with Disabilities by Least Restrictive Environment Ages 3-5 21,23
12	Students with Disabilities by Least Restrictive Environment Ages 6-21 24
12a-c	Students with Disabilities by Least Restrictive Environment in Rank Order 25
13	Students with Disabilities Served in Home/Hospital 28
14	Students with Disabilities Trend by LRE 29
15	Students with Disabilities by Race and LRE 30
16	Students with Disabilities Receiving ESY Service 31
17a	Students with Disabilities Placed by Their Parents in Private Schools Ages 3-21 32
17b	Students with Disabilities Placed by Their Parents in Private Schools Ages 3-5 33
18	Students with Disabilities by IEPs Older Than 13 Months and Evaluations Older Than 3 Years 34
19	Students with Disabilities by Exit Reason and LEA 36
20	Students with Disabilities by Exit Reason and Disability 38
21	Students with Disabilities by Extended Suspensions 40
22	Students with Disabilities by Multiple Suspension 41
23	Maryland Part C Child Report 43
24	Part C Transition Report 45

Figures

1	Students with Disabilities by Disability	4
2	Students with Disabilities Trend in High Growth Disabilities.....	6
3	Students with Disabilities by LRE	19
4	Students with Disabilities Trend by LRE Setting.....	20
5	Preschool Students with Disabilities by LRE	22
6	Students with Disabilities by Exit Reason	37
7	Part C Eligibility for 12/1/02.....	44

Introduction

Annually, on December 1, the Maryland State Department of Education (MSDE) collects information on students with disabilities (ages 3-21) who reside in the State of Maryland. In order to be included in this count, the child must be identified as having a disability and receiving active special education services on December 1.

The Special Services Information System (SSIS) consists of two separate data collections. The first is the December 1 Census, a count of all students receiving special education services on December 1 of every year. Data on students who have exited special education are collected on June 30 of every year.

The SSIS database is used to compile information on Maryland students with disabilities. MSDE uses the SSIS database as:

- a source of information to meet planning, monitoring, and accounting responsibilities for special education;
- a recording and reporting tool for decisions made by the public agencies; and
- an instrument for federal reporting requirements.*

Definitions

Least Restrictive Environments

(A) Outside the General Ed Classroom < 21% - 6-21 year old enrolled in a comprehensive school who receives special education and related services *outside the general education setting* for less than 21% of the school day.

(B) Outside the General Ed Classroom 21-60% - 6-21 year old enrolled in a comprehensive school who receives special education and related services *outside the general education setting* for at least 21%, but no more than 60% of the school day.

(C) Outside the General Ed Classroom > 60% - 6-21 year old enrolled in a comprehensive school who receives special education and related services *outside the general education setting* for more than 60% of the school day.

(D) Homebound Placement – 6-21 year old who receives special education instruction at home.

(E) Hospital Placement – 3-21 year old who receives special education in a medical treatment facility on an inpatient basis.

(F) Public Separate Day School – 6-21 year old who spends more than 50% of the school day in separate public facility *that does not house programs for students without disabilities*.

(G) Private Separate Day School – 6-21 year old who spends more than 50% of the school day in private separate day facility *that does not house programs for students without disabilities*.

(H) Public Residential Facility – 6-21 year old who receives special education and related services for greater than 50% of the school day in a public residential facility.

(I) Private Residential Facility or Center - 6-21 year old who receives special education and related services for greater than 50% of the school day in a private residential facility.

Additional Preschool Least Restrictive Environments

(F) Public Separate Day School – 3-5 year old who receives ALL of their special education and related services in educational programs in public day schools specifically for students with disabilities.

(G) Private Separate Day School - 3-5 year old who receives ALL of their special education and related services in educational programs in private day schools specifically for students with disabilities

(H) Public Residential Facility - 3-5 year old who receives ALL of their

special education and related services in publicly operated residential facility or residential medical facility on an inpatient basis.

(I) Private Residential Facility or Center - 3-5 year old who receives ALL of their special education and related services in privately operated residential facility or residential medical facility on an inpatient basis.

(J) Home – 3-5 year old who received ALL of their special education and related services in the principal residence of the child’s family or caregivers.

(K) Itinerant Setting – 3-5 year old who receives all of their special education and related services at a school, hospital facility on an outpatient basis, or other location for a short period of time (i.e., no more than 3 hours per week).

(L) Reverse Mainstreaming –3-5 year old who receives special education in a

class designed for disabled student where over 50% of the students are not disabled.

(M) Early Childhood Setting – 3-5 year old who receives all of their special education and related services in educational programs designed primarily for children without disabilities.

(N) Early Childhood Special Education Setting – 3-5 year old who receives all of their special education and related services in educational programs designed primarily for children with disabilities housed in regular school buildings or other community based settings.

(O) Part-Time Early Childhood Part-Time Early Childhood Special Education – 3-5 year old who receives services in multiple settings.

***For more information on the Maryland Infants & Toddlers Program see www.msde.state.md.us**

New Tables in this Publication:

Page 25-27 – Students with Disabilities by LRE in Rank Order

Table 1
 Students with Disabilities December 1, 2002 as Percent of September 30, 2002 Enrollment*: Maryland Public Schools
 Special Education - Ages 3-21

Local Education Agency	1992			1997			2002		
	Sept. 30 Enrollment	Special Education	Percent	Sept. 30 Enrollment	Special Education	Percent	Sept. 30 Enrollment	Special Education	Percent
Total State	751,850	90,940	12.1%	830,744	108,107	13.0%	866,743	112,184	12.9%
Allegany	11,167	1,315	11.8	11,110	1,689	15.2	10,128	1,781	17.6%
Anne Arundel	67,427	8,279	12.3	73,363	10,482	14.3	74,787	10,695	14.3%
Baltimore City	110,662	17,769	16.1	107,416	18,859	17.6	94,031	15,183	16.1%
Edison Schools	0	0	NA	0	0	NA	2,199	231	10.5%
Baltimore	93,270	11,324	12.1	104,708	13,081	12.5	108,297	13,559	12.5%
Calvert	11,615	1,500	12.9	14,736	1,887	12.8	17,153	2,315	13.5%
Caroline	5,003	653	13.1	5,635	785	13.9	5,535	722	13.0%
Carroll	23,165	2,751	11.9	26,823	3,772	14.1	28,430	3,723	13.1%
Cecil	13,565	1,909	14.1	15,327	2,281	14.9	16,203	2,593	16.0%
Charles	19,547	2,420	12.4	21,620	2,799	12.9	24,794	2,504	10.1%
Dorchester	5,034	734	14.6	5,175	676	13.1	4,817	591	12.3%
Frederick	29,297	3,431	11.7	34,569	4,482	13.0	38,559	4,728	12.3%
Garrett	5,108	709	13.9	5,105	772	15.1	4,833	721	14.9%
Harford	33,793	3,753	11.1	38,572	4,991	12.9	40,252	6,079	15.1%
Howard	32,959	3,677	11.2	40,215	4,053	10.1	47,197	5,005	10.6%
Kent	2,648	302	11.4	2,903	350	12.1	2,629	346	13.2%
Montgomery	110,037	11,411	10.4	125,023	15,111	12.1	138,983	17,013	12.2%
Prince George's	113,132	11,151	9.9	128,347	12,847	10.0	135,439	15,076	11.1%
Queen Anne's	5,752	607	10.6	6,607	876	13.3	7,523	995	13.2%
St. Mary's	13,019	1,719	13.2	14,691	2,075	14.1	16,110	2,144	13.3%
Somerset	3,429	403	11.8	3,162	405	12.8	2,978	361	12.1%
Talbot	4,240	393	9.3	4,557	566	12.4	4,498	467	10.4%
Washington	18,678	2,745	14.7	20,019	2,875	14.4	20,102	2,829	14.1%
Wicomico	13,274	1,423	10.7	14,229	1,606	11.3	14,395	1,663	11.6%
Worcester	6,029	562	9.3	6,832	787	11.5	6,871	860	12.5%

* LEA totals only - does not include State Operated Programs (SOP)

**September 30 Enrollment includes Special Education students. Table will remain in this format to preserve historical integrity.

Table 2
 Students with Disabilities by Disability
 December 1, 2002
 Ages 3-21

	Total Special Education	Mental Retardation		Hearing Impaired		Deaf		Speech/ Language		Visually Impaired		Emotion- ally Disturbed		Orthope- dically Impaired	
		Total	Percent	Total	Percent	Total	Percent	Total	Percent	Total	Percent	Total	Percent	Total	Percent
		Total State	113,128	6,914	6.11%	704	0.62%	700	0.62%	29,647	26.21%	586	0.52%	9,536	8.43%
Allegany	1,781	134	7.52%	0	0.00%	5	0.28%	398	22.35%	2	0.11%	82	4.60%	1	0.06%
Anne Arundel	10,695	466	4.36%	55	0.51%	9	0.08%	2,667	24.94%	32	0.30%	935	8.74%	13	0.12%
Baltimore City	15,183	1,987	13.09%	95	0.63%	14	0.09%	3,453	22.75%	89	0.59%	2,304	15.18%	132	0.87%
Edison Schools	231	22	9.52%	1	0.43%	0	0.00%	72	31.17%	1	0.43%	27	11.69%	0	0.00%
Baltimore	13,559	762	5.62%	83	0.61%	20	0.15%	3,325	24.52%	31	0.23%	1,446	10.66%	52	0.38%
Calvert	2,315	90	3.89%	18	0.78%	0	0.00%	657	28.38%	9	0.39%	136	5.87%	7	0.30%
Caroline	722	59	8.17%	1	0.14%	4	0.55%	248	34.35%	1	0.14%	31	4.29%	4	0.55%
Carroll	3,723	126	3.38%	30	0.81%	4	0.11%	1,324	35.54%	14	0.38%	191	5.13%	29	0.78%
Cecil	2,593	104	4.01%	19	0.73%	2	0.08%	701	27.03%	10	0.39%	146	5.63%	17	0.66%
Charles	2,504	302	12.06%	15	0.60%	1	0.04%	650	25.96%	7	0.28%	260	10.38%	5	0.20%
Dorchester	591	52	8.80%	2	0.34%	2	0.34%	172	29.10%	6	1.02%	16	2.71%	1	0.17%
Frederick	4,728	156	3.30%	38	0.80%	7	0.15%	1,556	32.91%	23	0.49%	319	6.75%	23	0.49%
Garrett	721	28	3.88%	5	0.69%	0	0.00%	196	27.18%	0	0.00%	73	10.12%	2	0.28%
Harford	6,079	246	4.05%	30	0.49%	7	0.12%	1,715	28.21%	17	0.28%	315	5.18%	26	0.43%
Howard	5,005	196	3.92%	23	0.46%	15	0.30%	1,685	33.67%	27	0.54%	267	5.33%	32	0.64%
Kent	346	30	8.67%	1	0.29%	1	0.29%	71	20.52%	2	0.58%	15	4.34%	0	0.00%
Montgomery	17,013	500	2.94%	123	0.72%	118	0.69%	5,486	32.25%	68	0.40%	1,122	6.59%	63	0.37%
Prince George's	15,076	947	6.28%	124	0.82%	37	0.25%	2,806	18.61%	44	0.29%	1,333	8.84%	127	0.84%
Queen Anne's	995	26	2.61%	0	0.00%	3	0.30%	171	17.19%	3	0.30%	40	4.02%	2	0.20%
St. Mary's	2,144	99	4.62%	15	0.70%	3	0.14%	695	32.42%	10	0.47%	103	4.80%	12	0.56%
Somerset	361	55	15.24%	0	0.00%	3	0.83%	50	13.85%	2	0.55%	16	4.43%	1	0.28%
Talbot	467	64	13.70%	1	0.21%	1	0.21%	136	29.12%	1	0.21%	17	3.64%	3	0.64%
Washington	2,829	177	6.26%	16	0.57%	2	0.07%	716	25.31%	10	0.35%	162	5.73%	8	0.28%
Wicomico	1,663	203	12.21%	5	0.30%	5	0.30%	387	23.27%	9	0.54%	60	3.61%	5	0.30%
Worcester	860	71	8.26%	4	0.47%	2	0.23%	308	35.81%	2	0.23%	8	0.93%	3	0.35%
Total Local Education Agencies	112,184	6,902	6.15%	704	0.63%	265	0.24%	29,645	26.43%	420	0.37%	9,424	8.40%	568	0.51%
Department of Juvenile Justice	213	10	4.85%	0	0.00%	0	0.00%	3	1.46%	0	0.00%	97	47.09%	1	0.49%
Carter	7	0	0.00%	0	0.00%	0	0.00%	1	14.29%	0	0.00%	0	0.00%	0	0.00%
Cheltenham Detention Facility	21	1	4.76%	0	0.00%	0	0.00%	0	0.00%	0	0.00%	14	66.67%	0	0.00%
Cumberland Youth Services Ctr.	30	1	3.33%	0	0.00%	0	0.00%	1	3.33%	0	0.00%	5	16.67%	0	0.00%
Hickey School	102	5	4.90%	0	0.00%	0	0.00%	1	0.98%	0	0.00%	48	47.06%	1	0.98%
Maryland Youth Residence Ctr.	7	1	14.29%	0	0.00%	0	0.00%	0	0.00%	0	0.00%	6	85.71%	0	0.00%
Noyse Childrens Center	14	0	0.00%	0	0.00%	0	0.00%	0	0.00%	0	0.00%	8	57.14%	0	0.00%
Schaffer House	1	0	0.00%	0	0.00%	0	0.00%	0	0.00%	0	0.00%	0	0.00%	0	0.00%
Thomas JS Waxter Children's Ctr.	8	1	12.50%	0	0.00%	0	0.00%	0	0.00%	0	0.00%	4	50.00%	0	0.00%
Thomas O'Farrell	23	1	4.35%	0	0.00%	0	0.00%	0	0.00%	0	0.00%	12	52.17%	0	0.00%
Adult Corrections	100	2	2.00%	0	0.00%	0	0.00%	0	0.00%	0	0.00%	14	14.00%	0	0.00%
Maryland School for the Blind	177	0	0.00%	0	0.00%	0	0.00%	0	0.00%	166	93.79%	1	0.56%	0	0.00%
Maryland School for the Deaf	454	0	0.00%	0	0.00%	435	95.81%	0	0.00%	0	0.00%	0	0.00%	0	0.00%
Total State Operated Programs	944	12	1.28%	0	0.00%	435	46.42%	2	0.21%	166	17.72%	112	11.95%	1	0.11%

Table 2 (Continued)
 Students with Disabilities by Disability
 December 1, 2002
 Ages 3-21

	Other Health Impaired		Specific Learning Disabilities		Deaf/Blind		Multiple Disabilities		Autism		Traumatic Brain Injury		Developmental Delay	
	Total	Percent	Total	Percent	Total	Percent	Total	Percent	Total	Percent	Total	Percent	Total	Percent
Total State	9,869	8.72%	41,860	37.00%	27	0.02%	5,735	5.07%	3,488	3.08%	342	0.30%	3,150	2.78%
Allegany	161	9.04%	789	44.30%	0	0.00%	137	7.69%	12	0.67%	1	0.06%	59	3.31%
Anne Arundel	814	7.61%	4,248	39.72%	2	0.02%	728	6.81%	397	3.71%	29	0.27%	300	2.81%
Baltimore City	1,461	9.63%	4,887	32.20%	1	0.01%	98	0.65%	420	2.77%	66	0.43%	176	1.16%
Edison Schools	47	20.35%	55	23.81%	0	0.00%	4	1.73%	1	0.43%	1	0.43%	0	0.00%
Baltimore	1,212	8.94%	5,181	38.21%	3	0.02%	339	2.50%	557	4.11%	43	0.32%	505	3.72%
Calvert	179	7.73%	1,065	46.00%	1	0.04%	46	1.99%	79	3.41%	2	0.09%	26	1.12%
Caroline	7	0.97%	318	44.04%	0	0.00%	33	4.57%	16	2.22%	0	0.00%	0	0.00%
Carroll	352	9.45%	1,349	36.21%	1	0.03%	177	4.75%	70	1.88%	16	0.43%	40	1.07%
Cecil	160	6.17%	1,219	47.01%	0	0.00%	110	4.24%	43	1.66%	11	0.42%	51	1.97%
Charles	159	6.35%	870	34.74%	0	0.00%	74	2.96%	50	2.00%	19	0.76%	92	3.67%
Dorchester	16	2.71%	260	43.99%	0	0.00%	50	8.46%	8	1.35%	1	0.17%	5	0.85%
Frederick	578	12.23%	1,644	34.77%	2	0.04%	118	2.50%	197	4.17%	9	0.19%	58	1.23%
Garrett	15	2.08%	343	47.57%	0	0.00%	59	8.18%	0	0.00%	0	0.00%	0	0.00%
Harford	1,019	16.76%	2,263	37.23%	2	0.03%	208	3.42%	100	1.65%	18	0.30%	113	1.86%
Howard	664	13.27%	1,275	25.47%	0	0.00%	217	4.34%	332	6.63%	16	0.32%	256	5.11%
Kent	28	8.09%	172	49.71%	0	0.00%	9	2.60%	7	2.02%	1	0.29%	9	2.60%
Montgomery	1,289	7.58%	6,172	36.28%	2	0.01%	1,118	6.57%	535	3.14%	43	0.25%	374	2.20%
Prince George's	951	6.31%	5,408	35.87%	4	0.03%	1,775	11.77%	482	3.20%	41	0.27%	997	6.61%
Queen Anne's	52	5.23%	624	62.71%	0	0.00%	19	1.91%	13	1.31%	2	0.20%	40	4.02%
St. Mary's	117	5.46%	1,011	47.15%	0	0.00%	28	1.31%	32	1.49%	6	0.28%	13	0.61%
Somerset	7	1.94%	188	52.08%	0	0.00%	21	5.82%	9	2.49%	1	0.28%	8	2.22%
Talbot	23	4.93%	191	40.90%	0	0.00%	13	2.78%	15	3.21%	2	0.43%	0	0.00%
Washington	384	13.57%	1,190	42.06%	0	0.00%	98	3.46%	53	1.87%	4	0.14%	9	0.32%
Wicomico	114	6.86%	628	37.76%	0	0.00%	177	10.64%	46	2.77%	5	0.30%	19	1.14%
Worcester	48	5.58%	371	43.14%	0	0.00%	26	3.02%	14	1.63%	3	0.35%	0	0.00%
Total Local Education Agencies	9,857	8.79%	41,721	37.19%	18	0.02%	5,682	5.07%	3,488	3.11%	340	0.30%	3,150	2.81%
Department of Juvenile Justice	12	5.83%	139	67.48%	9	4.37%	53	25.73%	0	0.00%	2	0.97%	0	0.00%
Carter Center	1	14.29%	5	71.43%	0	0.00%	0	0.00%	0	0.00%	0	0.00%	0	0.00%
Cheltenham Detention Facility	1	4.76%	3	14.29%	0	0.00%	2	9.52%	0	0.00%	0	0.00%	0	0.00%
Cumberland Youth Services Ctr.	4	13.33%	19	63.33%	0	0.00%	0	0.00%	0	0.00%	0	0.00%	0	0.00%
Hickey School	4	3.92%	41	40.20%	0	0.00%	2	1.96%	0	0.00%	0	0.00%	0	0.00%
Maryland Youth Residence Center	0	0.00%	0	0.00%	0	0.00%	0	0.00%	0	0.00%	0	0.00%	0	0.00%
Noyse Childrens Center	1	7.14%	2	14.29%	0	0.00%	3	21.43%	0	0.00%	0	0.00%	0	0.00%
Schaffer House	0	0.00%	1	100.00%	0	0.00%	0	0.00%	0	0.00%	0	0.00%	0	0.00%
Thomas JS Waxter Children's Ctr.	0	0.00%	3	37.50%	0	0.00%	0	0.00%	0	0.00%	0	0.00%	0	0.00%
Thomas O'Farrell	1	4.35%	8	34.78%	0	0.00%	1	4.35%	0	0.00%	0	0.00%	0	0.00%
Adult Corrections	0	0.00%	57	57.00%	0	0.00%	25	25.00%	0	0.00%	2	2.00%	0	0.00%
Maryland School for the Blind	0	0.00%	0	0.00%	9	5.08%	1	0.56%	0	0.00%	0	0.00%	0	0.00%
Maryland School for the Deaf	0	0.00%	0	0.00%	0	0.00%	19	4.19%	0	0.00%	0	0.00%	0	0.00%
Total State Operated Programs	12	1.28%	139	14.83%	9	0.96%	53	5.66%	0	0.00%	2	0.21%	0	0.00%

Figure 1
Students with Disabilities by Disability
Ages 3-21
December 1, 2002

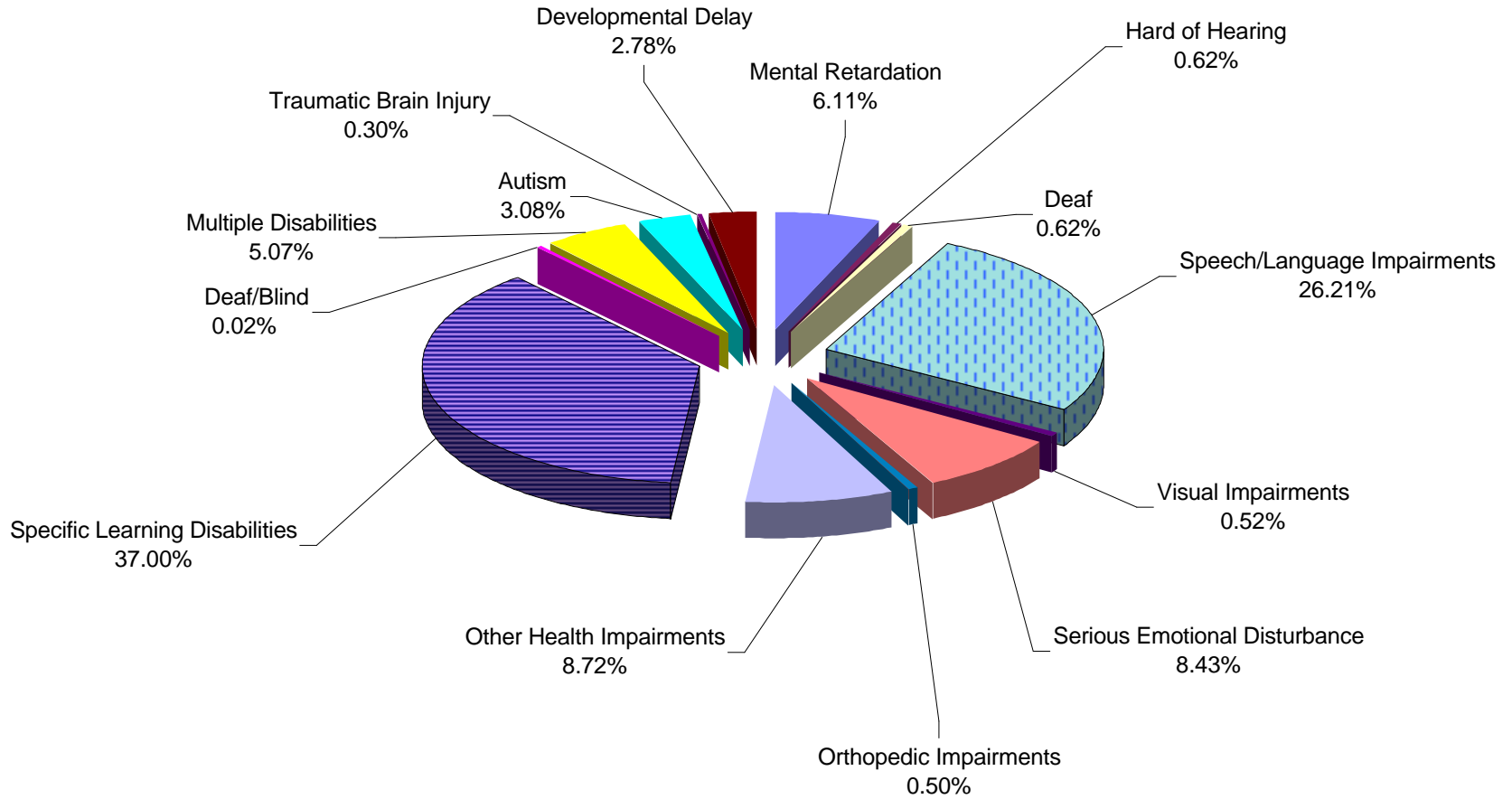


Table 3
 Students with Disabilities Trend in High Growth Disabilities
 Ages 3-21
 December 1, 1992 - December 1, 2002

	1992	1993	1994	1995	1996	1997	1998	1999	2000	2001	2002
Total State	91,813	94,999	96,779	100,863	104,630	109,084	111,688	111,711	112,078	112,426	113,128
Specific Learning Disabilities	43,096	43,007	44,816	43,482	43,958	45,189	45,927	45,459	44,379	43,345	41,860
Emotionally Impaired	5,407	5,669	5,638	6,737	7,172	7,724	8,358	8,714	9,145	9,301	9,537
Multiple Disabilities	4,685	5,404	5,352	5,385	5,691	6,264	6,635	6,503	6,437	6,028	5,735
Autism	41	280	422	697	999	1,282	1,594	1,886	2,304	2,823	3,488

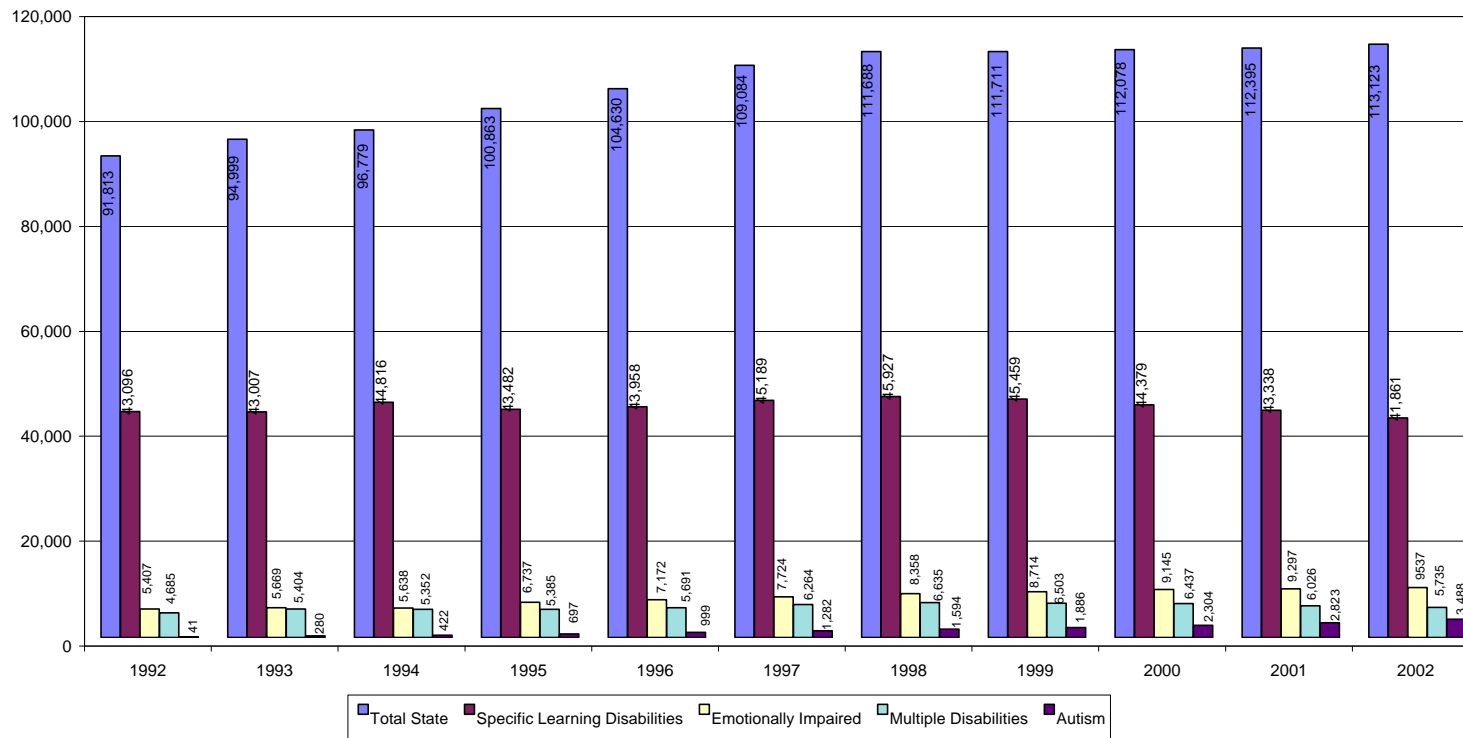


Figure 2
Students with Disabilities
Trend Data in High Growth Disabilities
Ages 3-21
1992-2002

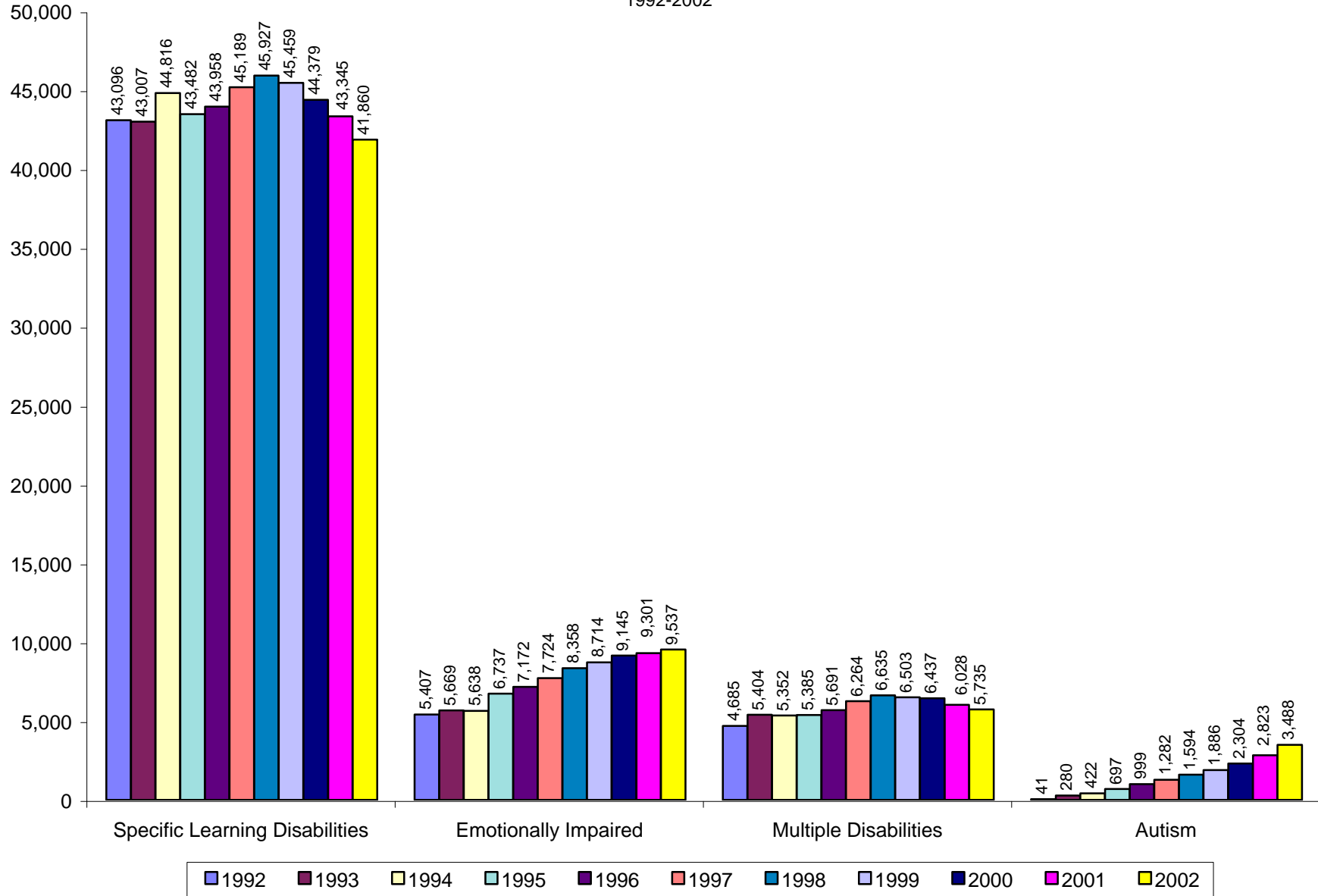


Table 4

Students with Disabilities by Age
December 1, 2002

	Total	Age																		
		3	4	5	6	7	8	9	10	11	12	13	14	15	16	17	18	19	20	21
Total State	113,128	2,723	4,039	4,748	5,429	6,122	7,270	8,384	9,276	9,658	9,828	9,859	9,156	8,602	7,464	6,340	2,539	993	602	96
Allegany	1,781	40	64	81	112	106	133	154	167	136	137	157	141	111	96	99	29	11	6	1
Anne Arundel	10,695	344	415	327	453	553	626	716	888	888	948	923	880	904	780	678	254	80	38	0
Baltimore City	15,183	261	434	610	620	717	927	1,063	1,251	1,445	1,553	1,507	1,209	1,162	977	750	367	197	119	14
Edison Schools	231	0	6	14	15	29	34	29	45	41	15	3	0	0	0	0	0	0	0	0
Baltimore	13,559	318	576	715	771	800	916	1,104	1,123	1,118	1,044	1,096	1,110	967	820	658	274	91	58	0
Calvert	2,315	46	68	101	128	141	122	164	208	189	216	220	202	173	152	117	50	15	1	2
Caroline	722	15	24	43	42	44	47	54	55	70	56	66	77	42	39	26	17	2	3	0
Carroll	3,723	69	135	178	174	208	223	270	297	304	321	336	324	293	265	220	65	27	13	1
Cecil	2,593	46	82	149	155	172	169	186	206	208	211	246	226	199	159	121	37	12	6	3
Charles	2,504	67	118	131	146	129	157	160	170	192	191	190	228	201	181	154	61	17	8	3
Dorchester	591	16	23	25	28	28	35	66	50	53	60	53	39	45	24	30	10	4	1	1
Frederick	4,728	104	130	173	229	309	366	353	408	408	418	402	381	387	266	257	89	24	20	4
Garrett	721	9	22	29	32	46	41	43	63	77	70	70	47	61	48	36	19	4	1	3
Harford	6,079	144	248	270	300	388	436	487	506	548	523	529	414	409	390	315	106	33	33	0
Howard	5,005	211	272	271	272	260	297	350	345	399	404	410	369	374	324	293	99	32	18	5
Kent	346	4	2	14	20	25	39	28	30	28	33	29	21	17	24	19	9	2	1	1
Montgomery	17,013	441	576	667	805	891	1,112	1,282	1,412	1,483	1,495	1,431	1,364	1,253	1,141	1,009	401	137	95	18
Prince George's	15,076	400	524	506	601	672	848	1,072	1,223	1,276	1,366	1,369	1,345	1,233	1,067	929	389	153	84	19
Queen Anne's	995	20	33	49	62	47	69	68	90	76	84	87	89	81	65	50	23	2	0	0
St. Mary's	2,144	45	71	118	115	148	193	191	185	170	171	153	142	129	125	118	41	14	13	2
Somerset	361	5	9	11	18	18	35	22	38	35	24	34	27	24	16	32	6	4	3	0
Talbot	467	12	18	25	22	31	32	35	27	31	36	36	42	40	37	18	15	5	4	1
Washington	2,829	43	90	107	160	177	200	231	215	228	217	256	230	232	194	153	60	26	8	2
Wicomico	1,663	33	49	67	74	108	122	153	155	131	129	130	124	105	102	101	46	23	9	2
Worcester	860	17	30	41	39	48	57	64	75	76	62	69	66	67	63	53	22	6	5	0
Total Local Education Agencies	112,184	2,710	4,019	4,722	5,393	6,095	7,236	8,345	9,232	9,610	9,784	9,802	9,097	8,509	7,355	6,236	2,489	921	547	82
Department of Juvenile Justice	213	0	0	0	0	0	0	0	0	0	2	5	24	41	64	52	20	5	0	0
Adult Corrections	100	0	0	0	0	0	0	0	0	0	0	0	0	1	2	8	12	30	36	11
Maryland School for the Blind	177	3	2	5	9	4	8	7	4	11	6	9	10	13	15	14	12	26	17	2
Maryland School for the Deaf	454	10	18	21	27	23	26	32	40	37	36	43	25	38	28	30	6	11	2	1
Total State Operated Programs	944	13	20	26	36	27	34	39	44	48	44	57	59	93	109	104	50	72	55	14

Table 5
Students with Disabilities by Age and Disability
December 1, 2002

Age	Total	Mental Retardation	Hearing Impaired	Deaf	Speech/ Language	Visually Impaired	Emotion-ally Disturbed	Orthope-dically Impaired	Other Health Impaired	Specific Learning Disabilities	Deaf/ Blind	Multiple Disabilities	Autism	Traumatic Brain Injury	Develop-mental Delay
Total	113,128	6,914	704	700	29,648	586	9,536	569	9,869	41,860	27	5,735	3,488	342	3,150
3	2,723	20	23	25	1,425	18	0	34	48	6	1	74	106	4	939
4	4,039	42	23	31	2,432	24	8	40	63	6	0	87	175	7	1101
5	4,748	96	44	35	3,198	27	24	38	128	30	0	122	245	6	755
3-5	11,510	158	90	91	7,055	69	32	112	239	42	1	283	526	17	2,795
6	5,429	194	49	45	3,815	30	78	46	261	210	1	191	265	9	235
7	6,122	250	49	35	3,636	32	149	38	452	820	2	250	277	14	118
8	7,270	373	56	45	3,288	36	286	40	680	1,822	2	310	323	8	1
9	8,384	438	45	51	2,819	35	499	44	935	2,795	3	411	290	18	1
10	9,276	522	53	56	2,467	40	655	46	1,055	3,547	2	453	350	30	0
11	9,658	592	57	59	1,774	45	879	27	1,115	4,321	2	481	277	29	0
6-11	46,139	2,369	309	291	17,799	218	2,546	241	4,498	13,515	12	2,096	1,782	108	355
12	9,828	560	45	47	1,393	50	1,002	37	1,059	4,877	0	485	242	31	0
13	9,859	609	54	58	1,066	34	1,121	26	1,017	5,099	0	544	203	28	0
14	9,156	579	43	39	824	36	1,140	33	937	4,850	2	486	146	41	0
15	8,602	617	52	54	599	42	1,186	29	795	4,583	0	456	164	25	0
16	7,464	543	46	42	458	37	1,098	27	631	4,004	1	419	132	26	0
17	6,340	540	44	49	344	41	876	37	507	3,372	4	383	109	34	0
12-17	51,249	3,448	284	289	4,684	240	6,423	189	4,946	26,785	7	2,773	996	185	0
18	2,539	363	18	9	88	18	376	14	139	1,203	0	219	76	16	0
19	993	284	2	16	16	23	103	6	31	250	5	192	56	9	0
20	602	258	1	3	5	16	49	6	13	54	2	146	43	6	0
21	96	34	0	1	1	2	7	1	3	11	0	26	9	1	0
18-21	4,230	939	21	29	110	59	535	27	186	1,518	7	583	184	32	0

Table 6
 Students with Disabilities by Grade
 Grades 1 - 6, Prek, and Kindergarten
 December 1, 2002

	Grand Total	Kinder- garten		Pre- school		1		2		3		4		5		6	
		Total	Percent	Total	Percent	Total	Percent	Total	Percent	Total	Percent	Total	Percent	Total	Percent	Total	Percent
Total State	113,128	5,135	4.54%	6,748	5.97%	5,964	5.27%	6,536	5.78%	7,565	6.69%	8,602	7.60%	9,282	8.21%	9,596	8.48%
Allegany	1,781	85	4.77%	99	5.56%	115	6.46%	99	5.56%	119	6.68%	133	7.47%	129	7.24%	142	7.97%
Anne Arundel	10,695	406	3.80%	757	7.08%	497	4.65%	564	5.27%	623	5.83%	762	7.12%	869	8.13%	806	7.54%
Baltimore City	15,183	557	3.67%	880	5.80%	819	5.40%	905	5.96%	1,089	7.17%	1,173	7.73%	1,352	8.91%	1,563	10.30%
Edison Schools	231	15	6.49%	3	1.30%	15	6.49%	44	19.05%	33	14.29%	36	15.58%	41	17.75%	44	19.05%
Baltimore	13,559	778	5.74%	876	6.46%	824	6.08%	830	6.12%	974	7.18%	1,129	8.33%	1,133	8.36%	1,079	7.96%
Calvert	2,315	103	4.45%	127	5.49%	137	5.92%	138	5.96%	144	6.22%	170	7.34%	192	8.29%	209	9.03%
Caroline	722	48	6.65%	57	7.89%	48	6.65%	41	5.68%	44	6.09%	66	9.14%	45	6.23%	69	9.56%
Carroll	3,723	227	6.09%	162	4.35%	186	4.99%	210	5.64%	211	5.66%	254	6.82%	287	7.70%	281	7.54%
Cecil	2,593	157	6.05%	119	4.59%	183	7.06%	181	6.98%	179	6.90%	218	8.41%	201	7.75%	224	8.64%
Charles	2,504	118	4.71%	204	8.15%	173	6.91%	141	5.63%	170	6.79%	157	6.27%	198	7.91%	182	7.27%
Dorchester	591	28	4.74%	38	6.43%	32	5.41%	33	5.58%	28	4.74%	69	11.68%	53	8.97%	56	9.48%
Frederick	4,728	193	4.08%	248	5.25%	260	5.50%	334	7.06%	361	7.64%	361	7.64%	400	8.46%	442	9.35%
Garrett	721	23	3.19%	49	6.80%	38	5.27%	59	8.18%	46	6.38%	57	7.91%	74	10.26%	68	9.43%
Harford	6,079	273	4.49%	444	7.30%	368	6.05%	360	5.92%	475	7.81%	495	8.14%	472	7.76%	535	8.80%
Howard	5,005	267	5.33%	480	9.59%	270	5.39%	275	5.49%	309	6.17%	346	6.91%	352	7.03%	404	8.07%
Kent	346	13	3.76%	6	1.73%	21	6.07%	30	8.67%	38	10.98%	35	10.12%	28	8.09%	25	7.23%
Montgomery	17,013	763	4.48%	980	5.76%	853	5.01%	942	5.54%	1,109	6.52%	1,326	7.79%	1,458	8.57%	1,486	8.73%
Prince George's	15,076	548	3.63%	900	5.97%	558	3.70%	698	4.63%	886	5.88%	1,002	6.65%	1,220	8.09%	1,183	7.85%
Queen Anne's	995	48	4.82%	60	6.03%	64	6.43%	49	4.92%	69	6.93%	75	7.54%	92	9.25%	82	8.24%
St. Mary's	2,144	171	7.98%	56	2.61%	131	6.11%	164	7.65%	195	9.10%	197	9.19%	185	8.63%	180	8.40%
Somerset	361	10	2.77%	13	3.60%	14	3.88%	24	6.65%	33	9.14%	31	8.59%	30	8.31%	35	9.70%
Talbot	467	28	6.00%	19	4.07%	25	5.35%	38	8.14%	27	5.78%	34	7.28%	28	6.00%	46	9.85%
Washington	2,829	118	4.17%	29	1.03%	186	6.57%	172	6.08%	195	6.89%	225	7.95%	200	7.07%	222	7.85%
Wicomico	1,663	78	4.69%	86	5.17%	90	5.41%	127	7.64%	137	8.24%	162	9.74%	158	9.50%	128	7.70%
Worcester	860	60	6.98%	30	3.49%	44	5.12%	59	6.86%	50	5.81%	60	6.98%	65	7.56%	70	8.14%
Total Local Education Agencies	112,184	5,115	4.56%	6,722	5.99%	5,951	5.30%	6,517	5.81%	7,544	6.72%	8,573	7.64%	9,262	8.26%	9,561	8.52%
Department of Juvenile Justice	213	0	0.00%	0	0.00%	0	0.00%	0	0.00%	0	0.00%	0	0.00%	0	0.00%	5	2.35%
Adult Corrections	100	0	0.00%	0	0.00%	0	0.00%	0	0.00%	0	0.00%	0	0.00%	0	0.00%	0	0.00%
Maryland School for the Blind	177	7	3.95%	9	5.08%	1	0.56%	3	1.69%	5	2.82%	2	1.13%	0	0.00%	4	2.26%
Maryland School for the Deaf	454	13	2.86%	17	3.74%	12	2.64%	16	3.52%	16	3.52%	27	5.95%	20	4.41%	26	5.73%
Total State Operated Programs	944	20	2.12%	26	2.75%	13	1.38%	19	2.01%	21	2.22%	29	3.07%	20	2.12%	35	3.71%

Table 6 (continued)
 Students with Disabilities by Grade
 Grades 7 - 12 & Ungraded
 December 1, 2002

	Ungraded															
	7		8		9		10		11		12		Elementary		Secondary	
	Total	Percent	Total	Percent	Total	Percent	Total	Percent	Total	Percent	Total	Percent	Total	Percent	Total	Percent
Total State	9,593	8.48%	9,172	8.11%	10,278	9.09%	7,933	7.01%	6,503	5.75%	5,953	5.26%	1,755	1.55%	2,513	2.22%
Allegany	139	7.80%	130	7.30%	120	6.74%	92	5.17%	78	4.38%	80	4.49%	89	5.00%	132	7.41%
Anne Arundel	866	8.10%	866	8.10%	993	9.28%	770	7.20%	673	6.29%	503	4.70%	293	2.74%	447	4.18%
Baltimore City	1,463	9.64%	1,258	8.29%	1,575	10.38%	1,060	6.98%	767	5.05%	720	4.74%	1	0.01%	1	0.01%
Edison Schools	0	0.00%	0	0.00%	0	0.00%	0	0.00%	0	0.00%	0	0.00%	0	0.00%	0	0.00%
Baltimore	1,037	7.65%	1,087	8.02%	1,128	8.32%	862	6.36%	762	5.62%	639	4.71%	153	1.13%	268	1.98%
Calvert	207	8.94%	206	8.90%	181	7.82%	159	6.87%	123	5.31%	100	4.32%	35	1.51%	84	3.63%
Caroline	66	9.14%	68	9.42%	87	12.05%	29	4.02%	44	6.09%	5	0.69%	3	0.42%	2	0.28%
Carroll	281	7.54%	289	7.76%	318	8.54%	239	6.42%	217	5.83%	190	5.10%	127	3.41%	244	6.55%
Cecil	219	8.45%	224	8.64%	217	8.37%	170	6.56%	135	5.21%	99	3.82%	0	0.00%	67	2.58%
Charles	210	8.39%	184	7.35%	254	10.14%	205	8.19%	163	6.51%	141	5.63%	0	0.00%	4	0.16%
Dorchester	82	13.87%	33	5.58%	60	10.15%	36	6.09%	18	3.05%	21	3.55%	0	0.00%	4	0.68%
Frederick	415	8.78%	384	8.12%	442	9.35%	339	7.17%	250	5.29%	299	6.32%	0	0.00%	0	0.00%
Garrett	68	9.43%	61	8.46%	67	9.29%	37	5.13%	29	4.02%	19	2.64%	2	0.28%	24	3.33%
Harford	585	9.62%	435	7.16%	440	7.24%	374	6.15%	356	5.86%	253	4.16%	79	1.30%	135	2.22%
Howard	398	7.95%	404	8.07%	445	8.89%	363	7.25%	310	6.19%	382	7.63%	0	0.00%	0	0.00%
Kent	34	9.83%	29	8.38%	29	8.38%	25	7.23%	15	4.34%	18	5.20%	0	0.00%	0	0.00%
Montgomery	1,483	8.72%	1,423	8.36%	1,535	9.02%	1,296	7.62%	1,121	6.59%	1,238	7.28%	0	0.00%	0	0.00%
Prince George's	1,298	8.61%	1,309	8.68%	1,552	10.29%	1,128	7.48%	869	5.76%	801	5.31%	567	3.76%	557	3.69%
Queen Anne's	82	8.24%	81	8.14%	99	9.95%	81	8.14%	65	6.53%	48	4.82%	0	0.00%	0	0.00%
St. Mary's	145	6.76%	151	7.04%	132	6.16%	149	6.95%	108	5.04%	97	4.52%	18	0.84%	65	3.03%
Somerset	24	6.65%	22	6.09%	24	6.65%	19	5.26%	23	6.37%	22	6.09%	30	8.31%	7	1.94%
Talbot	32	6.85%	39	8.35%	71	15.20%	27	5.78%	24	5.14%	12	2.57%	12	2.57%	5	1.07%
Washington	221	7.81%	223	7.88%	226	7.99%	204	7.21%	156	5.51%	120	4.24%	168	5.94%	164	5.80%
Wicomico	133	8.00%	134	8.06%	103	6.19%	97	5.83%	83	4.99%	58	3.49%	0	0.00%	89	5.35%
Worcester	57	6.63%	73	8.49%	58	6.74%	57	6.63%	66	7.67%	57	6.63%	36	4.19%	18	2.09%
Total Local Education Agencies	9,545	8.51%	9,113	8.12%	10,156	9.05%	7,818	6.97%	6,455	5.75%	5,922	5.28%	1,613	1.44%	2,317	2.07%
Department of Juvenile Justice	13	6.10%	27	12.68%	91	42.72%	62	29.11%	13	6.10%	2	0.94%	0	0.00%	0	0.00%
Adult Corrections	0	0.00%	0	0.00%	0	0.00%	0	0.00%	0	0.00%	0	0.00%	0	0.00%	100	100.00%
Maryland School for the Blind	2	1.13%	3	1.69%	2	1.13%	6	3.39%	2	1.13%	5	2.82%	30	16.95%	96	54.24%
Maryland School for the Deaf	33	7.27%	29	6.39%	29	6.39%	47	10.35%	33	7.27%	24	5.29%	112	24.67%	0	0.00%
Total State Operated Programs	48	5.08%	59	6.25%	122	12.92%	115	12.18%	48	5.08%	31	3.28%	142	15.04%	196	20.76%

Table 7
Students with Disabilities by Grade and Disability

December 1, 2002

	Grand		Mental Retardation		Hearing Impaired		Deaf		Speech/ Language		Visually Impaired		Emotion-ally Disturbed		Orthope-dically Impaired	
	Total	Percent	Total	Percent	Total	Percent	Total	Percent	Total	Percent	Total	Percent	Total	Percent	Total	Percent
Total	113,128		6,914	6.15%	704	0.63%	700	0.62%	29,648	26.38%	586	0.52%	9,537	8.49%	569	0.51%
Kindergarten	5,135	4.54%	118	2.51%	41	0.87%	33	0.70%	3,504	74.62%	26	0.55%	23	0.49%	41	0.87%
Preschool	6,748	5.96%	75	1.20%	51	0.81%	46	0.73%	3,735	59.66%	48	0.77%	28	0.45%	90	1.44%
Grade 1	5,964	5.27%	185	3.20%	55	0.95%	29	0.50%	4,145	71.60%	29	0.50%	97	1.68%	43	0.74%
Grade 2	6,536	5.78%	261	3.99%	56	0.86%	32	0.49%	3,605	55.05%	32	0.49%	188	2.87%	36	0.55%
Grade 3	7,565	6.69%	371	4.96%	47	0.63%	37	0.50%	3,210	42.95%	36	0.48%	352	4.71%	48	0.64%
Grade 4	8,602	7.60%	433	4.82%	50	0.56%	47	0.52%	2,762	30.75%	29	0.32%	548	6.10%	44	0.49%
Grade 5	9,282	8.20%	501	5.26%	55	0.58%	44	0.46%	2,360	24.77%	34	0.36%	705	7.40%	40	0.42%
Grade 6	9,596	8.48%	507	5.20%	58	0.59%	44	0.45%	1,690	17.33%	41	0.42%	980	10.05%	25	0.26%
Grade 7	9,593	8.48%	518	5.26%	41	0.42%	41	0.42%	1,262	12.82%	40	0.41%	1,054	10.71%	31	0.31%
Grade 8	9,172	8.11%	563	6.24%	51	0.57%	47	0.52%	957	10.61%	30	0.33%	1,039	11.52%	18	0.20%
Grade 9	10,278	9.09%	610	5.92%	53	0.51%	47	0.46%	841	8.16%	31	0.30%	1,443	13.99%	38	0.37%
Grade 10	7,933	7.01%	538	6.83%	58	0.74%	64	0.81%	542	6.88%	33	0.42%	1,108	14.06%	30	0.38%
Grade 11	6,503	5.75%	496	7.87%	40	0.63%	48	0.76%	392	6.22%	25	0.40%	858	13.61%	36	0.57%
Grade 12	5,953	5.26%	615	11.06%	42	0.75%	42	0.75%	373	6.71%	33	0.59%	752	13.52%	33	0.59%
Ungraded Elementary	1,755	1.55%	339	17.43%	4	0.21%	97	4.99%	209	10.75%	33	1.70%	59	3.03%	11	0.57%
Ungraded Secondary	2,513	2.22%	784	31.30%	2	0.08%	2	0.08%	61	2.44%	86	3.43%	303	12.10%	5	0.20%

Table 7 continued
 Students with Disabilities by Grade and Disability
 December 1, 2002

	Other Health Impaired		Specific Learning Disabilities		Multiple Disabilities		Deaf/Blind		Autism		Traumatic Brain Injury		Developmental Delay	
	Total	Percent	Total	Percent	Total	Percent	Total	Percent	Total	Percent	Total	Percent	Total	Percent
Total	9,869	8.78%	41,860	37.24%	5,735	5.10%	27	0.02%	3,488	3.10%	342	0.30%	3,149	2.80%
Kindergarten	145	3.09%	57	1.21%	116	2.47%	2	0.04%	250	5.32%	9	0.19%	770	16.40%
Preschool	128	2.04%	17	0.27%	157	2.51%	1	0.02%	318	5.08%	10	0.16%	2,044	32.65%
Grade 1	321	5.54%	427	7.38%	146	2.52%	0	0.00%	269	4.65%	8	0.14%	210	3.63%
Grade 2	536	8.18%	1,212	18.51%	223	3.41%	0	0.00%	242	3.70%	14	0.21%	99	1.51%
Grade 3	744	9.95%	2,103	28.14%	308	4.12%	1	0.01%	292	3.91%	13	0.17%	3	0.04%
Grade 4	1,005	11.19%	3,071	34.19%	322	3.59%	1	0.01%	266	2.96%	24	0.27%	0	0.00%
Grade 5	1,047	10.99%	3,751	39.38%	416	4.37%	3	0.03%	297	3.12%	29	0.30%	0	0.00%
Grade 6	1,066	10.93%	4,582	46.99%	358	3.67%	0	0.00%	229	2.35%	16	0.16%	0	0.00%
Grade 7	1,065	10.82%	4,875	49.53%	437	4.44%	0	0.00%	197	2.00%	32	0.33%	0	0.00%
Grade 8	981	10.87%	4,892	54.22%	419	4.64%	0	0.00%	145	1.61%	30	0.33%	0	0.00%
Grade 9	1,015	9.84%	5,611	54.42%	412	4.00%	0	0.00%	142	1.38%	35	0.34%	0	0.00%
Grade 10	711	9.02%	4,312	54.72%	366	4.64%	1	0.01%	145	1.84%	25	0.32%	0	0.00%
Grade 11	568	9.01%	3,554	56.38%	326	5.17%	1	0.02%	125	1.98%	34	0.54%	0	0.00%
Grade 12	405	7.28%	3,087	55.49%	374	6.72%	3	0.05%	164	2.95%	30	0.54%	0	0.00%
Ungraded Elementary	58	2.98%	89	4.58%	567	29.15%	5	0.26%	247	12.70%	14	0.72%	23	1.18%
Ungraded Secondary	74	2.95%	220	8.78%	788	31.46%	9	0.36%	160	6.39%	19	0.76%	0	0.00%

Table 8
 Students with Disabilities by Gender
 Ages 3-21
 December 1, 2002

	Grand Total	Male		Female	
		Total	Percent	Total	Percent
Total State	113,128	77,460	68.5%	35,661	31.5%
Allegany	1,781	1,159	65.1	622	34.9
Anne Arundel	10,695	7,251	67.8	3,444	32.2
Baltimore City	15,183	10,545	69.5	4,638	30.5
Edison Schools	231	158	68.4	73	31.6
Baltimore	13,559	9,279	68.4	4,280	31.6
Calvert	2,315	1,542	66.6	773	33.4
Caroline	722	463	64.1	259	35.9
Carroll	3,723	2,591	69.6	1,132	30.4
Cecil	2,593	1,762	68.0	831	32.0
Charles	2,504	1,763	70.4	741	29.6
Dorchester	591	392	66.3	199	33.7
Frederick	4,728	3,259	68.9	1,469	31.1
Garrett	721	491	68.1	230	31.9
Harford	6,079	4,140	68.1	1,939	31.9
Howard	5,005	3,500	69.9	1,505	30.1
Kent	346	231	66.8	115	33.2
Montgomery	17,013	11,498	67.6	5,515	32.4
Prince George's	15,076	10,452	69.3	4,624	30.7
Queen Anne's	995	701	70.5	294	29.5
St. Mary's	2,144	1,454	67.8	690	32.2
Somerset	361	235	65.1	126	34.9
Talbot	467	334	71.5	133	28.5
Washington	2,829	1,874	66.2	955	33.8
Wicomico	1,663	1,147	69.0	516	31.0
Worcester	860	601	69.9	259	30.1
Total Local Education Agencies	112,184	76,822	68.5	35,362	31.5
Department of Juvenile Justice	206	201	97.6	12	5.8
Carter Center	7	7	100.0	0	0.0
Cheltenham Detention Center	21	21	100.0	0	0.0
Cumberland Youth Services Ctr.	30	30	100.0	0	0.0
Hickey	102	102	100.0	0	0.0
Maryland Youth Residence Center	7	7	100.0	0	0.0
Noyse Children's Center	14	11	78.6	3	21.4
Schaffer House	1	1	100.0	0	0.0
Thomas JS Waxter Children's Ctr.	8	0	0.0	8	100.0
Thomas O'Farrell	23	22	95.7	1	4.3
Adult Corrections	100	99	99.0	1	1.0
Maryland School for the Blind	177	101	57.1	76	42.9
Maryland School for the Deaf	454	244	53.7	210	46.3
Total State Operated Programs	944	638	67.6	299	31.7

Table 9
 Students with Disabilities by Race
 December 1, 2002
 Ages 3-21

	Grand Total	American Indian/ Alaskan Native		Asian/ Pacific Islander		African American		White		Hispanic	
		Total	Percent	Total	Percent	Total	Percent	Total	Percent	Total	Percent
Total State	113,128	440	0.4%	2,211	2.0%	44,854	39.6%	60,110	53.1%	5,513	4.9%
Allegany	1,781	8	0.4	3	0.2	85	4.8	1,682	94.4	3	0.2
Anne Arundel	10,695	34	0.3	121	1.1	2,517	23.5	7,781	72.8	242	2.3
Baltimore City	15,183	47	0.3	55	0.4	12,988	85.5	2,007	13.2	86	0.6
Edison Schools	231	1	0.4	0	0.0	230	99.6	0	0.0	0	0.0
Baltimore	13,559	91	0.7	207	1.5	4,730	34.9	8,310	61.3	221	1.6
Calvert	2,315	7	0.3	14	0.6	548	23.7	1,726	74.6	20	0.9
Caroline	722	1	0.1	0	0.0	179	24.8	532	73.7	10	1.4
Carroll	3,723	10	0.3	35	0.9	139	3.7	3,503	94.1	36	1.0
Cecil	2,593	3	0.1	6	0.2	178	6.9	2,363	91.1	43	1.7
Charles	2,504	31	1.2	37	1.5	1,083	43.3	1,312	52.4	41	1.6
Dorchester	591	2	0.3	2	0.3	303	51.3	275	46.5	9	1.5
Frederick	4,728	9	0.2	64	1.4	579	12.2	3,932	83.2	144	3.0
Garrett	721	1	0.1	1	0.1	4	0.6	715	99.2	0	0.0
Harford	6,079	6	0.1	64	1.1	1,019	16.8	4,887	80.4	103	1.7
Howard	5,005	9	0.2	218	4.4	1,184	23.7	3,439	68.7	155	3.1
Kent	346	1	0.3	0	0.0	119	34.4	218	63.0	8	2.3
Montgomery	17,013	63	0.4	1,052	6.2	4,563	26.8	8,181	48.1	3,154	18.5
Prince George's	15,076	75	0.5	250	1.7	11,795	78.2	1,870	12.4	1,086	7.2
Queen Anne's	995	3	0.3	5	0.5	146	14.7	837	84.1	4	0.4
St. Mary's	2,144	19	0.9	24	1.1	502	23.4	1,568	73.1	31	1.4
Somerset	361	1	0.3	3	0.8	145	40.2	205	56.8	7	1.9
Talbot	467	1	0.2	5	1.1	158	33.8	287	61.5	16	3.4
Washington	2,829	11	0.4	10	0.4	255	9.0	2,517	89.0	36	1.3
Wicomico	1,663	4	0.2	21	1.3	691	41.6	921	55.4	26	1.6
Worcester	860	0	0.0	1	0.1	307	35.7	540	62.8	12	1.4
Total Local Education Agencies	112,184	438	0.4	2,198	2.0	44,447	39.6	59,608	53.1	5,493	4.9
Department of Juvenile Justice	213	1	0.5	1	0.5	161	75.6	45	21.1	5	2.3
Carter Center	7	0	0.0	0	0.0	4	57.1	3	42.9	0	0.0
Cheltenham Detention Center	21	0	0.0	0	0.0	20	95.2	1	4.8	0	0.0
Cumberland Youth Services Ctr.	30	1	3.3	0	0.0	20	66.7	9	30.0	0	0.0
Hickey School	102	0	0.0	1	1.0	79	77.5	18	17.6	4	3.9
Maryland Youth Residence Center	7	0	0.0	0	0.0	7	100.0	0	0.0	0	0.0
Noyse Children's Center	14	0	0.0	0	0.0	7	50.0	7	50.0	0	0.0
Schaffer House	1	0	0.0	0	0.0	1	100.0	0	0.0	0	0.0
Thomas JS Waxter Children's Ctr.	8	0	0.0	0	0.0	6	75.0	2	25.0	0	0.0
Thomas O'Farrell	23	0	0.0	0	0.0	17	73.9	5	21.7	1	4.3
Adult Corrections	100	0	0.0	0	0.0	80	80.0	20	20.0	0	0.0
Maryland School for the Blind	177	1	0.6	2	1.1	72	40.7	97	54.8	5	2.8
Maryland School for the Deaf	454	0	0.0	10	2.2	94	20.7	340	74.9	10	2.2
Total State Operated Programs	944	2	0.2	13	1.4	407	43.1	502	53.2	20	2.1

Table10
 Students with Disabilities by Race
 Compared with General Education Students by Race
 Ages 3-21
 December 1, 2002

	Grand Total	American Indian/ Alaskan Native		Asian/ Pacific Islander		African American		White		Hispanic	
		Total	Percent	Total	Percent	Total	Percent	Total	Percent	Total	Percent
Total SWD	112,184	438	0.4%	2,198	2.0%	44,447	39.6%	59,608	53.1%	5,493	4.9%
Total General Education	866,743	3,218	0.4%	41,141	4.8%	325,028	37.8%	446,718	51.9%	50,638	5.9%
Allegany SWD	1,781	8	0.4	3	0.2	85	4.8	1,682	94.4	3	0.2
General Education	10,128	23	0.2	65	0.6	403	4.0	9,612	94.9	25	0.2
Anne Arundel SWD	10,695	34	0.3	121	1.1	2,517	23.5	7,781	72.8	242	2.3
General Education	74,787	180	0.2	2,237	3.0	15,214	20.3	54,978	73.5	2,178	2.9
Baltimore City SWD	15,183	47	0.3	55	0.4	12,988	85.5	2,007	13.2	86	0.6
General Education	94,031	288	0.3	583	0.6	82,775	88.0	9,252	9.8	1,133	1.2
Edison Schools SWD	231	1	0.4	0	0.0	230	99.6	0	0.0	0	0.0
General Education	2,199	1	0.0	0	0.0	2,187	99.5	3	0.1	8	0.4
Baltimore SWD	13,559	91	0.7	207	1.5	4,730	34.9	8,310	61.3	221	1.6
General Education	108,297	527	0.5	4,546	4.2	38,247	35.3	62,548	57.8	2,429	2.2
Calvert SWD	2,315	7	0.3	14	0.6	548	23.7	1,726	74.6	20	0.9
General Education	17,153	34	0.2	184	1.1	2,673	15.6	14,069	82.0	193	1.1
Caroline SWD	722	1	0.1	0	0.0	179	24.8	532	73.7	10	1.4
General Education	5,535	11	0.2	47	0.8	1,062	19.2	4,257	76.9	158	2.9
Carroll SWD	3,723	10	0.3	35	0.9	139	3.7	3,503	94.1	36	1.0
General Education	28,430	67	0.2	302	1.1	734	2.6	27,030	95.1	297	1.0
Cecil SWD	2,593	3	0.1	6	0.2	178	6.9	2,363	91.1	43	1.7
General Education	16,203	47	0.3	107	0.7	1,096	6.8	14,621	90.2	332	2.0
Charles SWD	2,504	31	1.2	37	1.5	1,083	43.3	1,312	52.4	41	1.6
General Education	24,794	230	0.9	641	2.6	9,727	39.2	13,628	55.0	568	2.3
Dorchester SWD	591	2	0.3	2	0.3	303	51.3	275	46.5	9	1.5
General Education	4,817	14	0.3	54	1.1	2,026	42.1	2,648	55.0	75	1.6
Frederick SWD	4,728	9	0.2	64	1.4	579	12.2	3,932	83.2	144	3.0
General Education	38,559	82	0.2	1,019	2.6	3,655	9.5	32,475	84.2	1,328	3.4
Garrett SWD	721	1	0.1	1	0.1	4	0.6	715	99.2	0	0.0
General Education	4,833	0	0.0	6	0.1	11	0.2	4,811	99.5	5	0.1

*General education number includes students with disabilities.

Table 10 continued
 Students with Disabilities by Race
 Compared with General Education Students by Race
 Ages 3-21
 December 1, 2002

	Grand Total	American Indian/ Alaskan Native		Asian/ Pacific Islander		African American		White		Hispanic	
		Total	Percent	Total	Percent	Total	Percent	Total	Percent	Total	Percent
Harford SWD	6,079	6	0.1	64	1.1	1,019	16.8	4,887	80.4	103	1.7
General Education	40,252	210	0.5	903	2.2	6,256	15.5	31,885	79.2	998	2.5
Howard SWD	5,005	9	0.2	218	4.4	1,184	23.7	3,439	68.7	155	3.1
General Education	47,197	94	0.2	5,208	11.0	8,449	17.9	31,919	67.6	1,527	3.2
Kent SWD	346	1	0.3	0	0.0	119	34.4	218	63.0	8	2.3
General Education	2,629	4	0.2	14	0.5	677	25.8	1,857	70.6	77	2.9
Montgomery SWD	17,013	63	0.4	1,052	6.2	4,563	26.8	8,181	48.1	3,154	18.5
General Education	138,983	429	0.3	19,779	14.2	29,775	21.4	64,056	46.1	24,944	17.9
Prince George's SWD	15,076	75	0.5	250	1.7	11,795	78.2	1,870	12.4	1,086	7.2
General Education	135,439	775	0.6	4,245	3.1	105,169	77.7	12,318	9.1	12,932	9.5
Queen Anne's SWD	995	3	0.3	5	0.5	146	14.7	837	84.1	4	0.4
General Education	7,523	18	0.2	63	0.8	732	9.7	6,642	88.3	68	0.9
St. Mary's SWD	2,144	19	0.9	24	1.1	502	23.4	1,568	73.1	31	1.4
General Education	16,110	94	0.6	358	2.2	3,037	18.9	12,301	76.4	320	2.0
Somerset SWD	361	1	0.3	3	0.8	145	40.2	205	56.8	7	1.9
General Education	2,978	1	0.0	31	1.0	1,357	45.6	1,534	51.5	55	1.8
Talbot SWD	467	1	0.2	5	1.1	158	33.8	287	61.5	16	3.4
General Education	4,498	12	0.3	83	1.8	1,025	22.8	3,254	72.3	124	2.8
Washington SWD	2,829	11	0.4	10	0.4	255	9.0	2,517	89.0	36	1.3
General Education	20,102	41	0.2	243	1.2	1,783	8.9	17,685	88.0	350	1.7
Wicomico SWD	1,663	4	0.2	21	1.3	691	41.6	921	55.4	26	1.6
General Education	14,395	23	0.2	376	2.6	5,207	36.2	8,416	58.5	373	2.6
Worcester SWD	860	0	0.0	1	0.1	307	35.7	540	62.8	12	1.4
General Education	6,871	13	0.2	47	0.7	1,751	25.5	4,919	71.6	141	2.1

*General education number includes students with disabilities.

Table 11
 Students with Disabilities by Race and Disability
 Ages 3-21
 December 1, 2002

Race	Grand Total	Mental Retardation		Hearing Impaired		Deaf		Speech/ Language		Visually Impaired		Emotion-ally Disturbed		Orthope-dically Impaired	
		Total	Percent	Total	Percent	Total	Percent	Total	Percent	Total	Percent	Total	Percent	Total	Percent
Total State	113,128	6,914	100.00%	704	100.00%	700	100.00%	29,648	100.00%	586	100.00%	9,537	100.00%	569	100.00%
American Indian	440	31	0.45%	3	0.43%	0	0.00%	108	0.36%	2	0.34%	47	0.49%	2	0.35%
Asian	2,211	123	1.78%	26	3.69%	30	4.29%	869	2.93%	25	4.27%	50	0.52%	18	3.16%
African American	44,854	4,167	60.27%	266	37.78%	165	23.57%	9,599	32.38%	234	39.93%	4,842	50.77%	259	45.52%
White	60,110	2,391	34.58%	374	53.13%	468	66.86%	17,319	58.42%	300	51.19%	4,387	46.00%	264	46.40%
Hispanic	5,513	202	2.92%	35	4.97%	37	5.29%	1,753	5.91%	25	4.27%	211	2.21%	26	4.57%

Table 11 continued
 Students with Disabilities by Race and Disability
 Ages 3-21
 December 1, 2002

Race	Health Impaired		Learning Disabilities		Multiple Disabilities		Deaf/ Blind		Autism		Traumatic Brain Injury		Develop-mental Delay	
	Total	Percent	Total	Percent	Total	Percent	Total	Percent	Total	Percent	Total	Percent	Total	Percent
Total State	9,869	100.00%	41,860	100.00%	5,735	100.00%	27	100.00%	3,488	100.00%	342	100.00%	3,149	100.00%
American Indian	44	0.45%	151	0.36%	26	0.45%	0	0.00%	11	0.32%	1	0.29%	14	0.44%
Asian	132	1.34%	456	1.09%	198	3.45%	0	0.00%	166	4.76%	10	2.92%	108	3.43%
African American	3,436	34.82%	16,701	39.90%	2,344	40.87%	8	29.63%	1,210	34.69%	153	44.74%	1,470	46.68%
White	6,011	60.91%	22,185	53.00%	2,885	50.31%	18	66.67%	1,984	56.88%	163	47.66%	1,361	43.22%
Hispanic	246	2.49%	2,367	5.65%	282	4.92%	1	3.70%	117	3.35%	15	4.39%	196	6.22%

Table 12
 Students with Disabilities by Least Restrictive Environment
 Ages 3-21
 December 1, 2002

	Grand Total	Out < 21%		Out 21-60%		Out > 60%		Home		Hospital		Day				Residential			
		Total	Percent	Total	Percent	Total	Percent	Total	Percent	Total	Percent	Public		Private		Public		Private	
												Total	Percent	Total	Percent	Total	Percent	Total	Percent
Total State	113,128	52,233	51.40%	21,173	20.84%	20,411	20.09%	371	0.37%	35	0.03%	3,446	3.05%	3,833	3.39%	101	0.09%	378	0.33%
Allegany	1,781	978	61.28%	399	25.00%	187	11.72%	6	0.38%	0	0.00%	0	0.00%	19	1.07%	0	0.00%	7	0.39%
Anne Arundel	10,695	5,616	58.45%	1,589	16.54%	1,847	19.22%	66	0.69%	4	0.04%	104	0.97%	355	3.32%	4	0.04%	26	0.24%
Baltimore City	15,183	4,897	35.29%	3,367	24.26%	4,073	29.35%	25	0.18%	0	0.00%	824	5.43%	726	4.78%	0	0.00%	16	0.11%
Edison Schools	231	106	50.24%	28	13.27%	77	36.49%	0	0.00%	0	0.00%	0	0.00%	0	0.00%	0	0.00%	0	0.00%
Baltimore	13,559	6,065	50.75%	1,518	12.70%	3,348	28.02%	88	0.74%	15	0.11%	455	3.36%	468	3.45%	0	0.00%	49	0.36%
Calvert	2,315	1,016	48.38%	824	39.24%	146	6.95%	9	0.43%	0	0.00%	77	3.33%	43	1.86%	0	0.00%	2	0.09%
Caroline	722	380	59.38%	155	24.22%	99	15.47%	2	0.31%	0	0.00%	0	0.00%	1	0.14%	0	0.00%	3	0.42%
Carroll	3,723	2,326	69.62%	585	17.51%	233	6.97%	6	0.18%	1	0.03%	93	2.50%	100	2.69%	0	0.00%	4	0.11%
Cecil	2,593	1,377	59.46%	540	23.32%	343	14.81%	11	0.47%	0	0.00%	1	0.04%	25	0.96%	3	0.12%	16	0.62%
Charles	2,504	1,357	62.02%	383	17.50%	384	17.55%	18	0.82%	1	0.04%	9	0.36%	29	1.16%	2	0.08%	5	0.20%
Dorchester	591	432	81.97%	23	4.36%	70	13.28%	1	0.19%	0	0.00%	0	0.00%	0	0.00%	1	0.17%	0	0.00%
Frederick	4,728	3,297	76.30%	593	13.72%	207	4.79%	50	1.16%	2	0.04%	115	2.43%	61	1.29%	1	0.02%	2	0.04%
Garrett	721	359	54.31%	186	28.14%	112	16.94%	1	0.15%	0	0.00%	0	0.00%	2	0.28%	0	0.00%	1	0.14%
Harford	6,079	3,021	55.77%	1,966	36.29%	165	3.05%	9	0.17%	0	0.00%	137	2.25%	101	1.66%	2	0.03%	24	0.39%
Howard	5,005	2,474	58.20%	1,156	27.19%	426	10.02%	4	0.09%	0	0.00%	113	2.26%	93	1.86%	0	0.00%	10	0.20%
Kent	346	221	67.79%	44	13.50%	56	17.18%	3	0.92%	0	0.00%	0	0.00%	2	0.58%	0	0.00%	0	0.00%
Montgomery	17,013	6,709	43.77%	2,847	18.57%	4,629	30.20%	27	0.18%	0	0.00%	491	2.89%	656	3.86%	61	0.36%	18	0.11%
Prince George's	15,076	5,597	41.02%	3,349	24.54%	3,155	23.12%	17	0.12%	0	0.00%	482	3.20%	1,010	6.70%	17	0.11%	56	0.37%
Queen Anne's	995	683	76.48%	172	19.26%	21	2.35%	3	0.34%	7	0.70%	2	0.20%	8	0.80%	0	0.00%	1	0.10%
St. Mary's	2,144	1,098	57.49%	546	28.59%	232	12.15%	16	0.84%	1	0.05%	0	0.00%	4	0.19%	3	0.14%	10	0.47%
Somerset	361	250	74.40%	39	11.61%	40	11.90%	1	0.30%	0	0.00%	1	0.28%	1	0.28%	0	0.00%	4	1.11%
Talbot	467	271	65.78%	108	26.21%	32	7.77%	0	0.00%	0	0.00%	0	0.00%	0	0.00%	0	0.00%	1	0.21%
Washington	2,829	1,876	72.46%	355	13.71%	173	6.68%	2	0.08%	0	0.00%	97	3.43%	80	2.83%	0	0.00%	6	0.21%
Wicomico	1,663	1,066	70.41%	183	12.09%	255	16.84%	4	0.26%	1	0.06%	0	0.00%	1	0.06%	4	0.24%	0	0.00%
Worcester	860	587	76.04%	121	15.67%	59	7.64%	2	0.26%	3	0.35%	0	0.00%	0	0.00%	0	0.00%	0	0.00%
Total Local Education Agencies	112,184	52,059	51.68%	21,076	20.92%	20,369	20.22%	371	0.37%	35	0.03%	3,001	2.68%	3,785	3.37%	98	0.09%	261	0.23%
Department of Juvenile Justice	213	151	70.89%	20	9.39%	42	19.72%	0	0.00%	0	0.00%	0	0.00%	0	0.00%	0	0.00%	0	0.00%
Carter Center	7	4	57.14%	0	0.00%	3	42.86%	0	0.00%	0	0.00%	0	0.00%	0	0.00%	0	0.00%	0	0.00%
Cheltenham Detention Facility	21	2	9.52%	1	4.76%	18	85.71%	0	0.00%	0	0.00%	0	0.00%	0	0.00%	0	0.00%	0	0.00%
Cumberland Youth Services Ctr.	30	29	96.67%	1	3.33%	0	0.00%	0	0.00%	0	0.00%	0	0.00%	0	0.00%	0	0.00%	0	0.00%
Hickey School	102	69	67.65%	14	13.73%	19	18.63%	0	0.00%	0	0.00%	0	0.00%	0	0.00%	0	0.00%	0	0.00%
Maryland Youth Residence Center	7	7	100.00%	0	0.00%	0	0.00%	0	0.00%	0	0.00%	0	0.00%	0	0.00%	0	0.00%	0	0.00%
Noyse Children's Center	14	14	100.00%	0	0.00%	0	0.00%	0	0.00%	0	0.00%	0	0.00%	0	0.00%	0	0.00%	0	0.00%
Schaffer House	1	0	0.00%	0	0.00%	1	100.00%	0	0.00%	0	0.00%	0	0.00%	0	0.00%	0	0.00%	0	0.00%
Thomas JS Waxter Children's Ctr.	8	3	37.50%	4	50.00%	1	12.50%	0	0.00%	0	0.00%	0	0.00%	0	0.00%	0	0.00%	0	0.00%
Thomas O'Farrell	23	23	100.00%	0	0.00%	0	0.00%	0	0.00%	0	0.00%	0	0.00%	0	0.00%	0	0.00%	0	0.00%
Adult Corrections	100	23	23.00%	77	77.00%	0	0.00%	0	0.00%	0	0.00%	0	0.00%	0	0.00%	0	0.00%	0	0.00%
Maryland School for the Blind	177	0	0.00%	0	0.00%	0	0.00%	0	0.00%	0	0.00%	0	0.00%	48	27.12%	3	1.69%	117	66.10%
Maryland School for the Deaf	454	0	0.00%	0	0.00%	0	0.00%	0	0.00%	0	0.00%	445	98.02%	0	0.00%	0	0.00%	0	0.00%
Total State Operated Programs	944	174	19.66%	97	10.96%	42	4.75%	0	0.00%	0	0.00%	445	47.14%	48	5.08%	3	0.32%	117	12.39%

*Percentages calculated on total number of 3-21 year olds.

Figure 3
Students with Disabilities by LRE
Ages 3-21
December 1, 2002

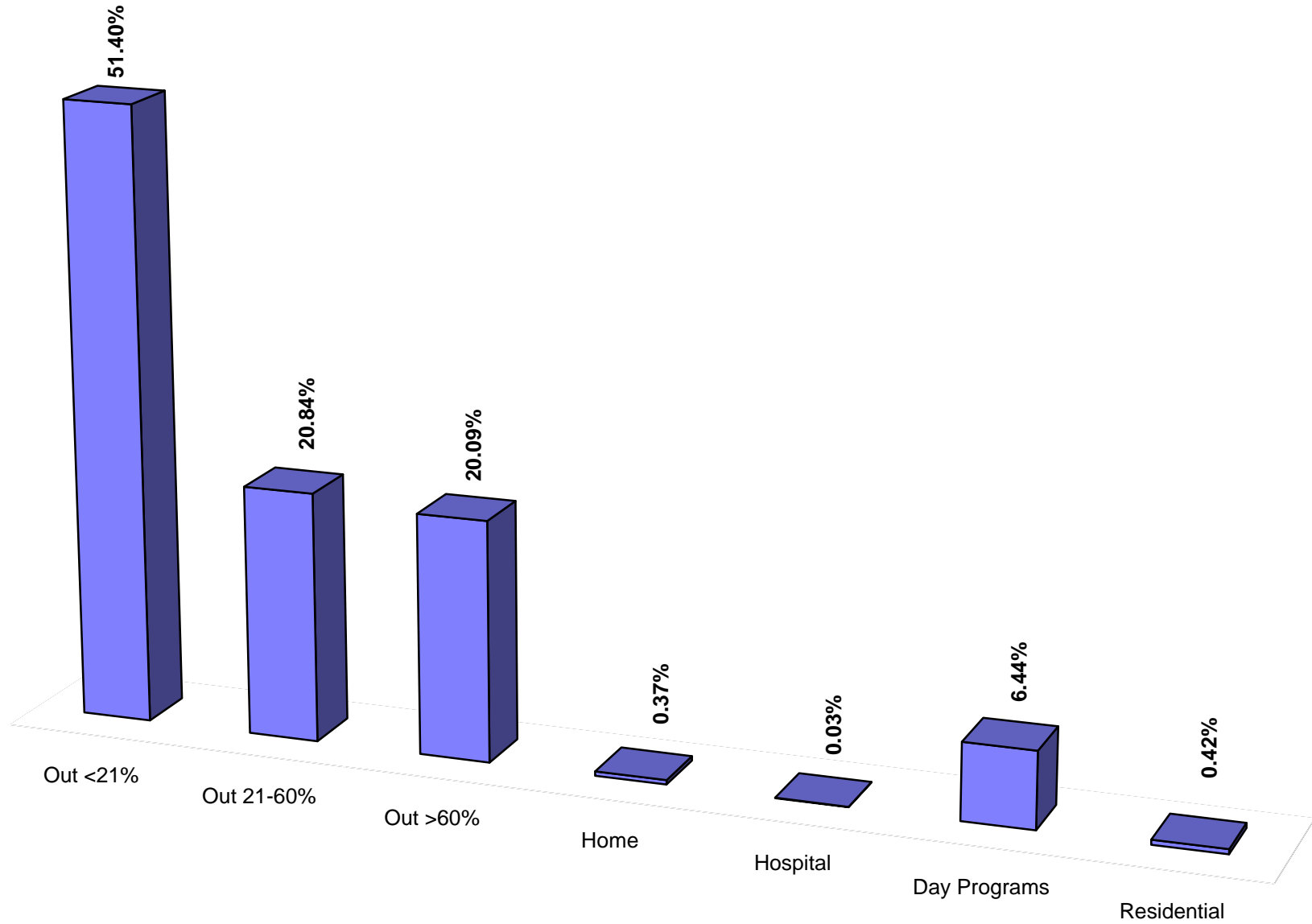


Figure 4
Students with Disabilities
Trend by LRE Setting
Ages 6-21
1996-2002

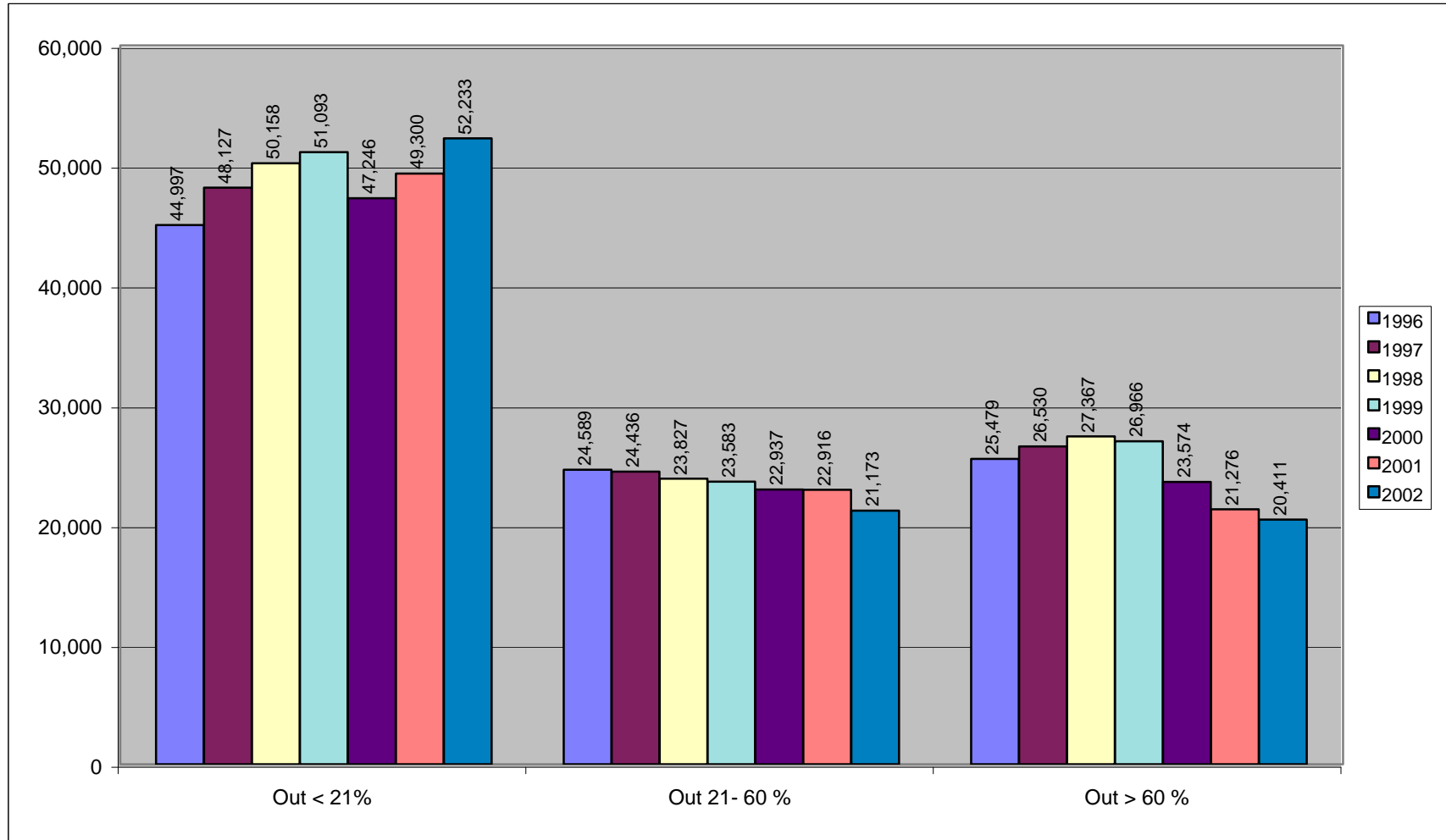


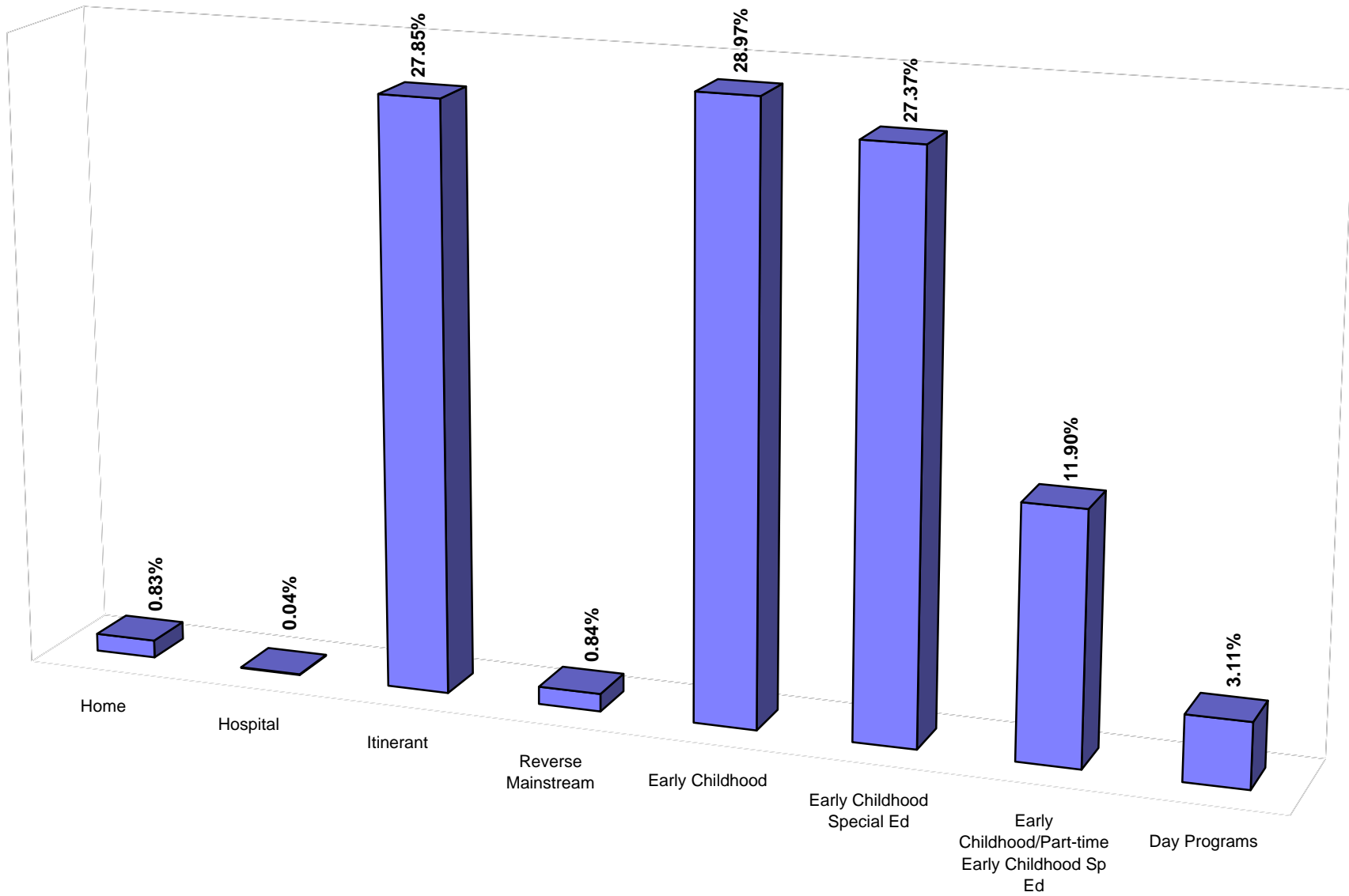
Table 12 (continued)

Preschool Students with Disabilities by Least Restrictive Environment
Ages 3-5
December 1, 2002

	Grand Total	Home		Itinerant		Rev Main		Early Childhood		Early Childhood Special Ed		Combined	
		Total	Percent	Total	Percent	Total	Percent	Total	Percent	Total	Percent	Total	Percent
Total State	11,510	95	0.83%	3,206	27.85%	97	0.84%	3,229	28.05%	3,150	27.37%	1,370	11.90%
Allegany	185	2	1.08%	21	11.35%	7	3.78%	127	68.65%	23	12.43%	5	2.70%
Anne Arundel	1,086	11	1.01%	382	35.17%	5	0.46%	189	17.40%	424	39.04%	73	6.72%
Baltimore City	1,305	23	1.76%	403	30.88%	30	2.30%	457	35.02%	311	23.83%	31	2.38%
Edison Schools	20	0	0.00%	0	0.00%	0	0.00%	20	100.00%	0	0.00%	0	0.00%
Baltimore	1,609	3	0.19%	145	9.01%	0	0.00%	814	50.59%	28	1.74%	563	34.99%
Calvert	215	0	0.00%	59	27.44%	0	0.00%	8	3.72%	64	29.77%	67	31.16%
Caroline	82	1	1.22%	20	24.39%	0	0.00%	36	43.90%	21	25.61%	4	4.88%
Carroll	382	2	0.52%	129	33.77%	0	0.00%	123	32.20%	102	26.70%	19	4.97%
Cecil	277	1	0.36%	36	13.00%	0	0.00%	148	53.43%	78	28.16%	14	5.05%
Charles	316	2	0.63%	190	60.13%	4	1.27%	115	36.39%	4	1.27%	1	0.32%
Dorchester	64	1	1.56%	1	1.56%	0	0.00%	24	37.50%	18	28.13%	20	31.25%
Frederick	407	1	0.25%	184	45.21%	0	0.00%	137	33.66%	64	15.72%	14	3.44%
Garrett	60	0	0.00%	2	3.33%	0	0.00%	58	96.67%	0	0.00%	0	0.00%
Harford	662	20	3.02%	87	13.14%	0	0.00%	321	48.49%	165	24.92%	61	9.21%
Howard	754	4	0.53%	268	35.54%	51	6.76%	66	8.75%	277	36.74%	63	8.36%
Kent	20	2	10.00%	3	15.00%	0	0.00%	12	60.00%	0	0.00%	3	15.00%
Montgomery	1,684	3	0.18%	798	47.39%	0	0.00%	105	6.24%	654	38.84%	15	0.89%
Prince George's	1,430	16	1.12%	273	19.09%	0	0.00%	65	4.55%	750	52.45%	289	20.21%
Queen Anne's	102	0	0.00%	23	22.55%	0	0.00%	39	38.24%	23	22.55%	13	12.75%
St. Mary's	234	2	0.85%	56	23.93%	0	0.00%	76	32.48%	47	20.09%	53	22.65%
Somerset	25	0	0.00%	4	16.00%	0	0.00%	9	36.00%	5	20.00%	7	28.00%
Talbot	55	0	0.00%	0	0.00%	0	0.00%	55	100.00%	0	0.00%	0	0.00%
Washington	240	0	0.00%	0	0.00%	0	0.00%	212	88.33%	23	9.58%	5	2.08%
Wicomico	149	1	0.67%	76	51.01%	0	0.00%	13	8.72%	48	32.21%	11	7.38%
Worcester	88	0	0.00%	46	52.27%	0	0.00%	0	0.00%	13	14.77%	29	32.95%
Total Local Education Agencies	11,451	95	0.83%	3,206	28.00%	97	0.85%	3,229	28.20%	3,142	27.44%	1,360	11.88%
Department of Juvenile Justice	0	0	0.00%	0	0.00%	0	0.00%	0	0.00%	0	0.00%	0	0.00%
Carter Center	0	0	0.00%	0	0.00%	0	0.00%	0	0.00%	0	0.00%	0	0.00%
Cheltenham Detention Facility	0	0	0.00%	0	0.00%	0	0.00%	0	0.00%	0	0.00%	0	0.00%
Cumberland Youth Services Ctr.	0	0	0.00%	0	0.00%	0	0.00%	0	0.00%	0	0.00%	0	0.00%
Hickey School	0	0	0.00%	0	0.00%	0	0.00%	0	0.00%	0	0.00%	0	0.00%
Maryland Youth Residence Center	0	0	0.00%	0	0.00%	0	0.00%	0	0.00%	0	0.00%	0	0.00%
Noyes Children's Center	0	0	0.00%	0	0.00%	0	0.00%	0	0.00%	0	0.00%	0	0.00%
Schaffer House	0	0	0.00%	0	0.00%	0	0.00%	0	0.00%	0	0.00%	0	0.00%
Thomas JS Waxter Children's Ctr.	0	0	0.00%	0	0.00%	0	0.00%	0	0.00%	0	0.00%	0	0.00%
Thomas O'Farrell	0	0	0.00%	0	0.00%	0	0.00%	0	0.00%	0	0.00%	0	0.00%
Adult Corrections	0	0	0.00%	0	0.00%	0	0.00%	0	0.00%	0	0.00%	0	0.00%
Maryland School for the Blind	10	0	0.00%	0	0.00%	0	0.00%	0	0.00%	8	80.00%	1	10.00%
Maryland School for the Deaf	49	0	0.00%	0	0.00%	0	0.00%	0	0.00%	0	0.00%	9	18.37%
Total State Operated Programs	59	0	0.00%	0	0.00%	0	0.00%	0	0.00%	8	13.56%	10	16.95%

*Percentages calculated on total number of 3-5 year olds.

Figure 5
Students with Disabilities by LRE
Age 3-5
December 1, 2002



*Percent is of 3-5 only

Table 12 continued

Students with Disabilities by Least Restrictive Environment
Ages 3-5
December 1, 2002

	Grand Total	Hospital		Day				Residential			
		Total	Percent	Public		Private		Public		Private	
				Total	Percent	Total	Percent	Total	Percent	Total	Percent
Total State	11,510	5	0.04%	207	1.80%	151	1.31%	0	0.00%	0	0.00%
Allegany	185	0	0.00%	0	0.00%	0	0.00%	0	0.00%	0	0.00%
Anne Arundel	1,086	0	0.00%	2	0.18%	0	0.00%	0	0.00%	0	0.00%
Baltimore City	1,305	0	0.00%	25	1.92%	25	1.92%	0	0.00%	0	0.00%
Edison Schools	20	0	0.00%	0	0.00%	0	0.00%	0	0.00%	0	0.00%
Baltimore	1,609	0	0.00%	46	2.86%	10	0.62%	0	0.00%	0	0.00%
Calvert	215	0	0.00%	17	7.91%	0	0.00%	0	0.00%	0	0.00%
Caroline	82	0	0.00%	0	0.00%	0	0.00%	0	0.00%	0	0.00%
Carroll	382	0	0.00%	5	1.31%	2	0.52%	0	0.00%	0	0.00%
Cecil	277	0	0.00%	0	0.00%	0	0.00%	0	0.00%	0	0.00%
Charles	316	0	0.00%	0	0.00%	0	0.00%	0	0.00%	0	0.00%
Dorchester	64	0	0.00%	0	0.00%	0	0.00%	0	0.00%	0	0.00%
Frederick	407	1	0.25%	6	1.47%	0	0.00%	0	0.00%	0	0.00%
Garrett	60	0	0.00%	0	0.00%	0	0.00%	0	0.00%	0	0.00%
Harford	662	0	0.00%	5	0.76%	3	0.45%	0	0.00%	0	0.00%
Howard	754	0	0.00%	9	1.19%	16	2.12%	0	0.00%	0	0.00%
Kent	20	0	0.00%	0	0.00%	0	0.00%	0	0.00%	0	0.00%
Montgomery	1,684	0	0.00%	18	1.07%	91	5.40%	0	0.00%	0	0.00%
Prince George's	1,430	0	0.00%	34	2.38%	3	0.21%	0	0.00%	0	0.00%
Queen Anne's	102	4	3.92%	0	0.00%	0	0.00%	0	0.00%	0	0.00%
St. Mary's	234	0	0.00%	0	0.00%	0	0.00%	0	0.00%	0	0.00%
Somerset	25	0	0.00%	0	0.00%	0	0.00%	0	0.00%	0	0.00%
Talbot	55	0	0.00%	0	0.00%	0	0.00%	0	0.00%	0	0.00%
Washington	240	0	0.00%	0	0.00%	0	0.00%	0	0.00%	0	0.00%
Wicomico	149	0	0.00%	0	0.00%	0	0.00%	0	0.00%	0	0.00%
Worcester	88	0	0.00%	0	0.00%	0	0.00%	0	0.00%	0	0.00%
Total Local Education Agencies	11,451	5	0.04%	167	1.46%	150	1.31%	0	0.00%	0	0.00%
Maryland School for the Blind	10	0	0.00%	0	0.00%	1	10.00%	0	0.00%	0	0.00%
Maryland School for the Deaf	49	0	0.00%	40	81.63%	0	0.00%	0	0.00%	0	0.00%
Total State Operated Programs	59	0	0.00%	40	67.80%	1	1.69%	0	0.00%	0	0.00%

Table 12 continued

Students with Disabilities by Least Restrictive Environment
Ages 6-21
December 1, 2002

	Grand Total	Out < 21%		Out 21-60%		Out > 60%		Home		Hospital		Day				Residential			
		Total	Percent	Total	Percent	Total	Percent	Total	Percent	Total	Percent	Public		Private		Public		Private	
												Total	Percent	Total	Percent	Total	Percent	Total	Percent
Total State	101,618	52,233	51.40%	21,173	20.84%	20,411	20.09%	371	0.37%	30	0.03%	3,239	3.19%	3,682	3.62%	101	0.10%	378	0.37%
Allegany	1,596	978	61.28%	399	25.00%	187	11.72%	6	0.38%	0	0.00%	0	0.00%	19	1.19%	0	0.00%	7	0.44%
Anne Arundel	9,609	5,616	58.45%	1,589	16.54%	1,847	19.22%	66	0.69%	4	0.04%	102	1.06%	355	3.69%	4	0.04%	26	0.27%
Baltimore City	13,878	4,897	35.29%	3,367	24.26%	4,073	29.35%	25	0.18%	0	0.00%	799	5.76%	701	5.05%	0	0.00%	16	0.12%
Edison Schools	211	106	50.24%	28	13.27%	77	36.49%	0	0.00%	0	0.00%	0	0.00%	0	0.00%	0	0.00%	0	0.00%
Baltimore	11,950	6,065	50.75%	1,518	12.70%	3,348	28.02%	88	0.74%	15	0.13%	409	3.42%	458	3.83%	0	0.00%	49	0.41%
Calvert	2,100	1,016	48.38%	824	39.24%	146	6.95%	9	0.43%	0	0.00%	60	2.86%	43	2.05%	0	0.00%	2	0.10%
Caroline	640	380	59.38%	155	24.22%	99	15.47%	2	0.31%	0	0.00%	0	0.00%	1	0.16%	0	0.00%	3	0.47%
Carroll	3,341	2,326	69.62%	585	17.51%	233	6.97%	6	0.18%	1	0.03%	88	2.63%	98	2.93%	0	0.00%	4	0.12%
Cecil	2,316	1,377	59.46%	540	23.32%	343	14.81%	11	0.47%	0	0.00%	1	0.04%	25	1.08%	3	0.13%	16	0.69%
Charles	2,188	1,357	62.02%	383	17.50%	384	17.55%	18	0.82%	1	0.05%	9	0.41%	29	1.33%	2	0.09%	5	0.23%
Dorchester	527	432	81.97%	23	4.36%	70	13.28%	1	0.19%	0	0.00%	0	0.00%	0	0.00%	1	0.19%	0	0.00%
Frederick	4,321	3,297	76.30%	593	13.72%	207	4.79%	50	1.16%	1	0.02%	109	2.52%	61	1.41%	1	0.02%	2	0.05%
Garrett	661	359	54.31%	186	28.14%	112	16.94%	1	0.15%	0	0.00%	0	0.00%	2	0.30%	0	0.00%	1	0.15%
Harford	5,417	3,021	55.77%	1,966	36.29%	165	3.05%	9	0.17%	0	0.00%	132	2.44%	98	1.81%	2	0.04%	24	0.44%
Howard	4,251	2,474	58.20%	1,156	27.19%	426	10.02%	4	0.09%	0	0.00%	104	2.45%	77	1.81%	0	0.00%	10	0.24%
Kent	326	221	67.79%	44	13.50%	56	17.18%	3	0.92%	0	0.00%	0	0.00%	2	0.61%	0	0.00%	0	0.00%
Montgomery	15,329	6,709	43.77%	2,847	18.57%	4,629	30.20%	27	0.18%	0	0.00%	473	3.09%	565	3.69%	61	0.40%	18	0.12%
Prince George's	13,646	5,597	41.02%	3,349	24.54%	3,155	23.12%	17	0.12%	0	0.00%	448	3.28%	1,007	7.38%	17	0.12%	56	0.41%
Queen Anne's	893	683	76.48%	172	19.26%	21	2.35%	3	0.34%	3	0.34%	2	0.22%	8	0.90%	0	0.00%	1	0.11%
St. Mary's	1,910	1,098	57.49%	546	28.59%	232	12.15%	16	0.84%	1	0.05%	0	0.00%	4	0.21%	3	0.16%	10	0.52%
Somerset	336	250	74.40%	39	11.61%	40	11.90%	1	0.30%	0	0.00%	1	0.30%	1	0.30%	0	0.00%	4	1.19%
Talbot	412	271	65.78%	108	26.21%	32	7.77%	0	0.00%	0	0.00%	0	0.00%	0	0.00%	0	0.00%	1	0.24%
Washington	2,589	1,876	72.46%	355	13.71%	173	6.68%	2	0.08%	0	0.00%	97	3.75%	80	3.09%	0	0.00%	6	0.23%
Wicomico	1,514	1,066	70.41%	183	12.09%	255	16.84%	4	0.26%	1	0.07%	0	0.00%	1	0.07%	4	0.26%	0	0.00%
Worcester	772	587	76.04%	121	15.67%	59	7.64%	2	0.26%	3	0.39%	0	0.00%	0	0.00%	0	0.00%	0	0.00%
Total Local Education Agencies	100,733	52,059	51.68%	21,076	20.92%	20,369	20.22%	371	0.37%	30	0.03%	2,834	2.81%	3,635	3.61%	98	0.10%	261	0.26%
Department of Juvenile Justice	213	151	70.89%	20	9.39%	42	19.72%	0	0.00%	0	0.00%	0	0.00%	0	0.00%	0	0.00%	0	0.00%
Carter Center	7	4	57.14%	0	0.00%	3	42.86%	0	0.00%	0	0.00%	0	0.00%	0	0.00%	0	0.00%	0	0.00%
Cheltenham Detention Facility	21	2	9.52%	1	4.76%	18	85.71%	0	0.00%	0	0.00%	0	0.00%	0	0.00%	0	0.00%	0	0.00%
Cumberland Youth Services Ctr.	30	29	96.67%	1	3.33%	0	0.00%	0	0.00%	0	0.00%	0	0.00%	0	0.00%	0	0.00%	0	0.00%
Hickey School	102	69	67.65%	14	13.73%	19	18.63%	0	0.00%	0	0.00%	0	0.00%	0	0.00%	0	0.00%	0	0.00%
Maryland Youth Residence Center	7	7	100.00%	0	0.00%	0	0.00%	0	0.00%	0	0.00%	0	0.00%	0	0.00%	0	0.00%	0	0.00%
Noyse Children's Center	14	14	100.00%	0	0.00%	0	0.00%	0	0.00%	0	0.00%	0	0.00%	0	0.00%	0	0.00%	0	0.00%
Schaffer House	1	0	0.00%	0	0.00%	1	100.00%	0	0.00%	0	0.00%	0	0.00%	0	0.00%	0	0.00%	0	0.00%
Thomas JS Waxter Children's Ctr.	8	3	37.50%	4	50.00%	1	12.50%	0	0.00%	0	0.00%	0	0.00%	0	0.00%	0	0.00%	0	0.00%
Thomas O'Farrell	23	23	100.00%	0	0.00%	0	0.00%	0	0.00%	0	0.00%	0	0.00%	0	0.00%	0	0.00%	0	0.00%
Adult Corrections	100	23	23.00%	77	77.00%	0	0.00%	0	0.00%	0	0.00%	0	0.00%	0	0.00%	0	0.00%	0	0.00%
Maryland School for the Blind	167	0	0.00%	0	0.00%	0	0.00%	0	0.00%	0	0.00%	0	0.00%	47	36.72%	3	1.80%	117	70.06%
Maryland School for the Deaf	405	0	0.00%	0	0.00%	0	0.00%	0	0.00%	0	0.00%	405	100.00%	0	0.00%	0	0.00%	0	0.00%
Total State Operated Programs	885	174	18.43%	97	10.96%	42	4.45%	0	0.00%	0	0.00%	405	77.44%	47	8.99%	3	0.34%	117	13.22%

*Percentages calculated on total number of 6-21 year olds.

Table 12a
 Students with Disabilities in LRE M Compared to LRE A in Rank Order
 December 1, 2002

LRE M Early Childhood Ages 3-5			LRE A Out < 21% Ages 6-21		
	Total	Percent		Total	Percent
Total State	3,209	27.93%	Total State	51,953	51.23%
Worcester	0	0.00%	Baltimore City	4,897	35.29%
Calvert	8	3.72%	Prince George's	5,597	41.02%
Prince George's	65	4.55%	Montgomery	6,709	43.77%
Montgomery	105	6.24%	Calvert	1,016	48.38%
Wicomico	13	8.72%	Baltimore	6,065	50.75%
Howard	66	8.75%	Garrett	359	54.31%
Anne Arundel	189	17.40%	Harford	3,021	55.77%
Carroll	123	32.20%	St. Mary's	1,098	57.49%
St. Mary's	76	32.48%	Howard	2,474	58.20%
Frederick	137	33.66%	Anne Arundel	5,616	58.45%
Baltimore City	457	35.02%	Caroline	380	59.38%
Somerset	9	36.00%	Cecil	1,377	59.46%
Charles	115	36.39%	Allegany	978	61.28%
Dorchester	24	37.50%	Charles	1,357	62.02%
Queen Anne's	39	38.24%	Talbot	271	65.78%
Caroline	36	43.90%	Kent	221	67.79%
Harford	321	48.49%	Carroll	2,326	69.62%
Baltimore	814	50.59%	Wicomico	1,066	70.41%
Cecil	148	53.43%	Washington	1,876	72.46%
Kent	12	60.00%	Worcester	587	76.04%
Allegany	127	68.65%	Somerset	250	74.40%
Washington	212	88.33%	Frederick	3,297	76.30%
Garrett	58	96.67%	Queen Anne's	683	76.48%
Talbot	55	100.00%	Dorchester	432	81.97%

*Data does not include Edison Schools

Table 12b
 Maryland Students with Disabilities LRE O Compared to LRE B in Rank Order
 December 1, 2002

LRE O Combined Early Childhood Ages 3-5			LRE B Out 21-60% Ages 6-21		
	Total	Percent		Total	Percent
Total State	1,360	11.84%	Total State	21,048	20.75%
Garrett	0	0.00%	Dorchester	23	4.36%
Talbot	0	0.00%	Somerset	39	11.61%
Charles	1	0.32%	Wicomico	183	12.09%
Montgomery	15	0.89%	Baltimore	1,518	12.70%
Washington	5	2.08%	Kent	44	13.50%
Baltimore City	31	2.38%	Washington	355	13.71%
Allegany	5	2.70%	Frederick	593	13.72%
Frederick	14	3.44%	Worcester	121	15.67%
Caroline	4	4.88%	Anne Arundel	1,589	16.54%
Carroll	19	4.97%	Charles	383	17.50%
Cecil	14	5.05%	Carroll	585	17.51%
Anne Arundel	73	6.72%	Montgomery	2,847	18.57%
Wicomico	11	7.38%	Queen Anne's	172	19.26%
Howard	63	8.36%	Cecil	540	23.32%
Harford	61	9.21%	Caroline	155	24.22%
Queen Anne's	13	12.75%	Baltimore City	3,367	24.26%
Kent	3	15.00%	Prince George's	3,349	24.54%
Prince George's	289	20.21%	Allegany	399	25.00%
St. Mary's	53	22.65%	Talbot	108	26.21%
Somerset	7	28.00%	Howard	1,156	27.19%
Dorchester	20	31.25%	Garrett	186	28.14%
Calvert	67	31.16%	St. Mary's	546	28.59%
Worcester	29	32.95%	Harford	1,966	36.29%
Baltimore	563	34.99%	Calvert	824	39.24%

*Data does not include Edison Schools

Table 12c
 Students with Disabilities LRE N Compared to LRE C in Rank Order
 December 1, 2002

LRE N Early Childhood Special Education Ages 3-5			LRE C Out > 60% Ages 6-21		
	Total	Percent		Total	Percent
Total State	3,142	27.35%	Total State	20,292	20.01%
Garrett	0	0.00%	Queen Anne's	21	2.35%
Kent	0	0.00%	Harford	165	3.05%
Talbot	0	0.00%	Frederick	207	4.79%
Charles	4	1.27%	Washington	173	6.68%
Baltimore	28	1.74%	Calvert	146	6.95%
Washington	23	9.58%	Carroll	233	6.97%
Allegany	23	12.43%	Talbot	32	7.77%
Worcester	13	14.77%	Worcester	59	7.64%
Frederick	64	15.72%	Howard	426	10.02%
Somerset	5	20.00%	Allegany	187	11.72%
St. Mary's	47	20.09%	Somerset	40	11.90%
Queen Anne's	23	22.55%	St. Mary's	232	12.15%
Baltimore City	311	23.83%	Dorchester	70	13.28%
Harford	165	24.92%	Cecil	343	14.81%
Caroline	21	25.61%	Caroline	99	15.47%
Carroll	102	26.70%	Wicomico	255	16.84%
Dorchester	18	28.13%	Garrett	112	16.94%
Cecil	78	28.16%	Kent	56	17.18%
Calvert	64	29.77%	Charles	384	17.55%
Wicomico	48	32.21%	Anne Arundel	1,847	19.22%
Howard	277	36.74%	Prince George's	3,155	23.12%
Montgomery	654	38.84%	Baltimore	3,348	28.02%
Anne Arundel	424	39.04%	Baltimore City	4,073	29.35%
Prince George's	750	52.45%	Montgomery	4,629	30.20%

*Data does not include Edison Schools

Table 13
 Students with Disabilities Served in Home/Hospital
 Ages 3-21
 December 1, 2002

	Grand Total	Home		Hospital	
		Number	Percent	Number	Percent
Total State	113,128	371	0.37%	35	0.03%
Allegany	1,781	6	0.38%	0	0.00%
Anne Arundel	10,695	66	0.69%	4	0.04%
Baltimore City	15,183	25	0.18%	0	0.00%
Edison Schools	231	0	0.00%	0	0.00%
Baltimore	13,559	88	0.74%	15	0.11%
Calvert	2,315	9	0.43%	0	0.00%
Caroline	722	2	0.31%	0	0.00%
Carroll	3,723	6	0.18%	1	0.03%
Cecil	2,593	11	0.47%	0	0.00%
Charles	2,504	18	0.82%	1	0.04%
Dorchester	591	1	0.19%	0	0.00%
Frederick	4,728	50	1.16%	2	0.04%
Garrett	721	1	0.15%	0	0.00%
Harford	6,079	9	0.17%	0	0.00%
Howard	5,005	4	0.09%	0	0.00%
Kent	346	3	0.92%	0	0.00%
Montgomery	17,013	27	0.18%	0	0.00%
Prince George's	15,076	17	0.12%	0	0.00%
Queen Anne's	995	3	0.34%	7	0.70%
St. Mary's	2,144	16	0.84%	1	0.05%
Somerset	361	1	0.30%	0	0.00%
Talbot	467	0	0.00%	0	0.00%
Washington	2,829	2	0.08%	0	0.00%
Wicomico	1,663	4	0.26%	1	0.06%
Worcester	860	2	0.26%	3	0.35%
Total Local Education Agencies	112,184	371	0.37%	35	0.03%
Department of Juvenile Justice	213	0	0.00%	0	0.00%
Carter Center	7	0	0.00%	0	0.00%
Cheltenham Detention Facility	21	0	0.00%	0	0.00%
Cumberland Youth Services Ctr.	30	0	0.00%	0	0.00%
Hickey School	102	0	0.00%	0	0.00%
Maryland Youth Residence Center	7	0	0.00%	0	0.00%
Noyse Children's Center	14	0	0.00%	0	0.00%
Schaffer House	1	0	0.00%	0	0.00%
Thomas JS Waxter Children's Ctr.	8	0	0.00%	0	0.00%
Thomas O'Farrell	23	0	0.00%	0	0.00%
Adult Corrections	100	0	0.00%	0	0.00%
Maryland School for the Blind	177	0	0.00%	0	0.00%
Maryland School for the Deaf	454	0	0.00%	0	0.00%
Total State Operated Programs	944	0	0.00%	0	0.00%

*Home percents calculated on 6-21 year olds. Hospital percents calculated on 3-21 year olds.

Table 14

Students with Disabilities Trend by LRE
1993 - 2002

	1993	1994	1995	1996	1997	1998	1999	2000	2001	2002
Total all LRE	94,999	96,779	100,863	104,630	109,084	111,688	111,711	112,078	112,426	113,128
Ages 3-5										
Early Childhood (M)	NA	NA	NA	NA	NA	NA	NA	2,513	2,652	3,229
Early Childhood Special Ed (N)	NA	NA	NA	NA	NA	NA	NA	2,326	3,144	3,150
Combined (O)	NA	NA	NA	NA	NA	NA	NA	1,871	1,115	1,370
Ages 6-21										
Out < 21% (A)	46,384	47,506	43,295	44,997	48,127	50,158	51,093	47,246	49,300	52,233
Out 21- 60% (B)	17,824	18,772	25,596	24,589	24,436	23,827	23,583	22,937	22,916	21,173
Out > 60% (C)	23,528	23,578	23,010	25,479	26,530	27,367	26,966	23,574	21,276	20,411

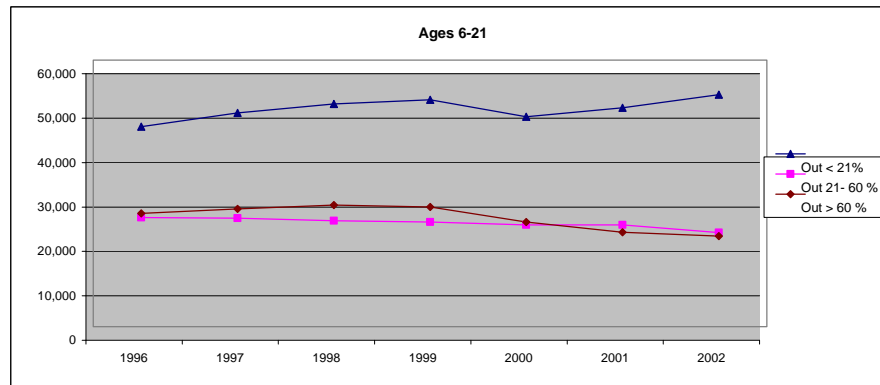
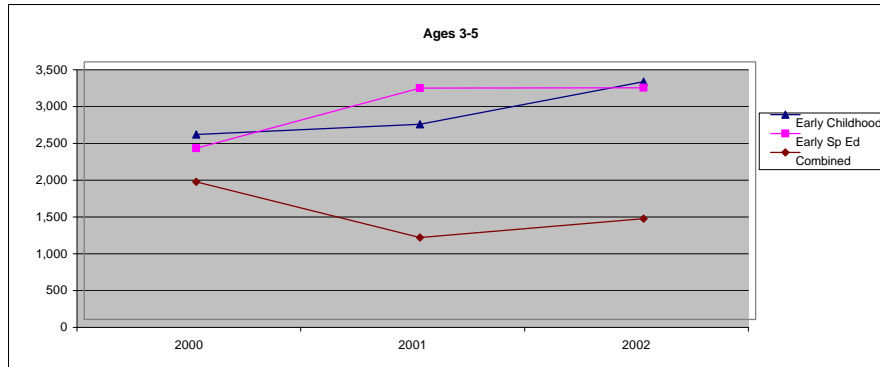


Table 15
Students with Disabilities by Race and LRE
Ages 3-21
December 1, 2002

	Grand Total	Out < 21%		Out 21-60%		Out > 60%		Home		Hospital		Public				Private			
		Total	Percent	Total	Percent	Total	Percent	Total	Percent	Total	Percent	Day Prog		Residential		Day Prog		Residential	
												Total	Percent	Total	Percent	Total	Percent	Total	Percent
Total State	113,128	52,233	46.17%	21,173	18.72%	20,411	18.04%	371	0.33%	35	0.03%	3,446	3.05%	101	0.09%	3,833	3.39%	378	0.33%
American Indian/Alaskan Native	440	194	44.09%	88	20.00%	66	15.00%	3	0.68%	1	0.23%	12	2.73%	0	0.00%	21	4.77%	1	0.23%
Asian	2,211	941	42.56%	313	14.16%	464	20.99%	7	0.32%	0	0.00%	74	3.35%	2	0.09%	75	3.39%	9	0.41%
African American	44,854	16,636	37.09%	9,838	21.93%	11,016	24.56%	124	0.28%	14	0.03%	1,717	3.83%	38	0.08%	1,736	3.87%	137	0.31%
White	60,110	32,376	53.86%	9,739	16.20%	7,408	12.32%	227	0.38%	20	0.03%	1,518	2.53%	54	0.09%	1,901	3.16%	222	0.37%
Hispanic	5,513	2,086	37.84%	1,195	21.68%	1,457	26.43%	10	0.18%	0	0.00%	125	2.27%	7	0.13%	100	1.81%	9	0.16%

Preschool Race and LRE
Ages 3-5

	Home		Itinerant		Reverse Mainstream		Early Childhood		Early Childhood Special Ed		Combined	
	Total	Percent	Total	Percent	Total	Percent	Total	Percent	Total	Percent	Total	Percent
Total State	95	21.59%	3,206	2.83%	97	0.09%	3,229	2.85%	3,150	2.78%	1,370	1.21%
American Indian/Alaskan Native	0	0.00%	17	3.86%	1	0.23%	16	3.64%	14	3.18%	6	1.36%
Asian	4	0.18%	86	3.89%	6	0.27%	52	2.35%	152	6.87%	26	1.18%
African American	37	0.08%	768	1.71%	36	0.08%	904	2.02%	1,287	2.87%	566	1.26%
White	53	0.09%	2,168	3.61%	53	0.09%	2,181	3.63%	1,462	2.43%	728	1.21%
Hispanic	1	0.02%	167	3.03%	1	0.02%	76	1.38%	235	4.26%	44	0.80%

Table 16

*Number and Percent of Students with Disabilities Receiving ESY Service

Ages 3-21

December 1, 2002

	Grand Total	ESY	
		Total	Percent
Total State	113,128	9,096	8.0%
Allegany	1,781	231	13.0
Anne Arundel	10,695	785	7.3
Baltimore City	15,183	628	4.1
Edison Schools	231	28	12.1
Baltimore	13,559	1,210	8.9
Calvert	2,315	45	1.9
Caroline	722	4	0.6
Carroll	3,723	197	5.3
Cecil	2,593	72	2.8
Charles	2,504	113	4.5
Dorchester	591	7	1.2
Frederick	4,728	543	11.5
Garrett	721	26	3.6
Harford	6,079	226	3.7
Howard	5,005	1,044	20.9
Kent	346	65	18.8
Montgomery	17,013	1,667	9.8
Prince George's	15,076	1,576	10.5
Queen Anne's	995	62	6.2
St. Mary's	2,144	90	4.2
Somerset	361	9	2.5
Talbot	467	6	1.3
Washington	2,829	329	11.6
Wicomico	1,663	36	2.2
Worcester	860	4	0.5
Total Local Education Agencies	112,184	9,003	8.0
Department of Juvenile Justice	213	0	0.0
Adult Corrections	100	0	0.0
Maryland School for the Blind	177	91	51.4
Maryland School for the Deaf	454	2	0.4
Total State Operated Programs	944	93	9.9

*Data may not reflect actual numbers or data may be incomplete. MSDE is working with local agencies to improve the accuracy of the d

Table 17a

*Number and Percent of Students with Disabilities Placed by Their Parents in Private Schools
 Ages 3-21
 December 1, 2002

	Grand			Parent Placed		Receiving Special Education Service		*Only Related Service		*No Service	
	Total	Total	Percent	Total	Percent	Total	Percent	Total	Percent	Total	Percent
Total State	112,184	1,444	1.29%	1,357	1.2%	16	0.0%	71	0.1%		
Allegany	1,781	16	0.90%	16	0.9	0	0.0	0	0.0		
Anne Arundel	10,695	141	1.32%	141	1.3	0	0.0	0	0.0		
Baltimore City	15,183	148	0.97%	132	0.9	9	0.1	7	4.7		
Edison Schools	231	1	0.43%	1	0.4	0	0.0	0	0.0		
Baltimore	13,559	255	1.88%	255	1.9	0	0.0	0	0.0		
Calvert	2,315	10	0.43%	8	0.3	0	0.0	2	20.0		
Caroline	722	1	0.14%	1	0.1	0	0.0	0	0.0		
Carroll	3,723	218	5.86%	206	5.5	6	0.2	6	2.8		
Cecil	2,593	20	0.77%	17	0.7	0	0.0	3	15.0		
Charles	2,504	30	1.20%	22	0.9	0	0.0	8	26.7		
Dorchester	591	1	0.17%	1	0.2	0	0.0	0	0.0		
Frederick	4,728	47	0.99%	43	0.9	0	0.0	4	8.5		
Garrett	721	1	0.14%	1	0.1	0	0.0	0	0.0		
Harford	6,079	132	2.17%	131	2.2	0	0.0	1	0.8		
Howard	5,005	13	0.26%	5	0.1	0	0.0	8	61.5		
Kent	346	4	1.16%	0	0.0	0	0.0	4	100.0		
Montgomery	17,013	255	1.50%	251	1.5	0	0.0	4	1.6		
Prince George's	15,076	70	0.46%	60	0.4	0	0.0	10	14.3		
Queen Anne's	995	0	0.00%	0	0.0	0	0.0	0	0.0		
St. Mary's	2,144	30	1.40%	28	1.3	1	0.0	1	3.3		
Somerset	361	1	0.28%	1	0.3	0	0.0	0	0.0		
Talbot	467	17	3.64%	8	1.7	0	0.0	9	52.9		
Washington	2,829	19	0.67%	16	0.6	0	0.0	3	15.8		
Wicomico	1,663	9	0.54%	8	0.5	0	0.0	1	11.1		
Worcester	860	5	0.58%	5	0.6	0	0.0	0	0.0		

*Data may not reflect actual numbers or data may be incomplete. MSDE is working with local agencies to improve the accuracy of the data.

Table 17b

*Number and Percent of Students with Disabilities Placed by Their Parents in Private Schools

Ages 3-5

December 1, 2002

	Grand	Parent Placed		Receiving Special Education Service		*Only Related Service		*No Service	
	Total	Total	Percent	Total	Percent	Total	Percent	Total	Percent
Total State	11,510	438	3.81%	437	3.8%	4	0.0%	8	0.1%
Allegany	185	7	3.78%	7	3.8	0	0.0	0	0.0
Anne Arundel	1,086	5	0.46%	5	0.5	0	0.0	0	0.0
Baltimore City	1,305	7	0.54%	6	0.5	0	0.0	1	14.3
Edison Schools	20	0	0.00%	0	0.0	0	0.0	0	0.0
Baltimore	1,609	146	9.07%	146	9.1	0	0.0	0	0.0
Calvert	215	0	0.00%	0	0.0	0	0.0	0	0.0
Caroline	82	4	4.88%	0	0.0	4	4.9	0	0.0
Carroll	382	125	32.72%	125	32.7	0	0.0	0	0.0
Cecil	277	1	0.36%	1	0.4	0	0.0	0	0.0
Charles	316	8	2.53%	7	2.2	0	0.0	1	12.5
Dorchester	64	0	0.00%	0	0.0	0	0.0	0	0.0
Frederick	407	5	1.23%	5	1.2	0	0.0	0	0.0
Garrett	60	1	1.67%	1	1.7	0	0.0	0	0.0
Harford	662	19	2.87%	19	2.9	0	0.0	0	0.0
Howard	754	1	0.13%	1	0.1	0	0.0	0	0.0
Kent	20	0	0.00%	75	375.0	0	0.0	0	0.0
Montgomery	1,684	75	4.45%	19	1.1	0	0.0	1	1.3
Prince George's	1,430	19	1.33%	7	0.5	0	0.0	3	15.8
Queen Anne's	102	0	0.00%	1	1.0	0	0.0	0	0.0
St. Mary's	234	7	2.99%	4	1.7	0	0.0	1	14.3
Somerset	25	1	4.00%	1	4.0	0	0.0	0	0.0
Talbot	55	4	7.27%	4	7.3	0	0.0	1	25.0
Washington	240	1	0.42%	1	0.4	0	0.0	0	0.0
Wicomico	149	2	1.34%	2	1.3	0	0.0	0	0.0
Worcester	88	0	0.00%	0	0.0	0	0.0	0	0.0

*Data may not reflect actual numbers or data may be incomplete. MSDE is working with local agencies to improve the accuracy of the data.

Table 18

*Number and Percent of Students with Disabilities with IEPs Older than 13 Months and Evaluations Which Need to be Updated
 Ages 3-21
 December 1, 2002

	Grand	IEPs Older than 13 Months		Evaluations Which Need to be Updated	
	Total	Total	Percent	Total	Percent
Total State	113,128	2,243	2.0%	5,028	4.4%
Allegany	1,781	11	0.6	60	3.4
Anne Arundel	10,695	436	4.1	203	1.9
Baltimore City	15,183	23	0.2	0	0.0
Edison Schools	231	1	0.4	0	0.0
Baltimore	13,559	0	0.0	85	0.6
Calvert	2,315	4	0.2	25	1.1
Caroline	722	0	0.0	1	0.1
Carroll	3,723	36	1.0	97	2.6
Cecil	2,593	11	0.4	61	2.4
Charles	2,504	35	1.4	281	11.2
Dorchester	591	1	0.2	1	0.2
Frederick	4,728	260	5.5	7	0.1
Garrett	721	3	0.4	5	0.7
Harford	6,079	0	0.0	0	0.0
Howard	5,005	12	0.2	9	0.2
Kent	346	1	0.3	0	0.0
Montgomery	17,013	1	0.0	2,444	14.4
Prince George's	15,076	1,042	6.9	1,508	10.0
Queen Anne's	995	155	15.6	54	5.4
St. Mary's	2,144	4	0.2	18	0.8
Somerset	361	6	1.7	11	3.0
Talbot	467	2	0.4	3	0.6
Washington	2,829	120	4.2	88	3.1
Wicomico	1,663	62	3.7	44	2.6
Worcester	860	5	0.6	2	0.2
Total Local Education Agencies	112,184	2,231	2.0	5,007	4.5
Department of Juvenile Justice	213	49	23.0	30	14.1
Adult Corrections	100	12	12.0	10	10.0
Maryland School for the Blind	177	0	0.0	11	6.2
Maryland School for the Deaf	454	0	0.0	0	0.0
Total State Operated Programs	944	12	1.3	21	2.2

*Data may not reflect actual numbers or data may be incomplete. MSDE is working with local agencies to improve the accuracy of the data.

MARYLAND SPECIAL EDUCATION EXIT DATA

JULY 1, 2001 - JUNE 30, 2002

Table 19
 Students with Disabilities by Exit Reason and LEA
 Ages 14 - 21
 July 2001 - June 2002

	Total	Returned to		Graduated				Reached Maximum		Deceased		Transferred		Dropped	
		General Ed	Percent	with Diploma	Percent	with Certificate	Percent	Age	Percent	Percent	Percent	Percent	Out	Percent	
STATE TOTAL	9,765	1,326	13.6%	3,780	38.7%	435	4.5%	105	1.1%	26	0.3%	2,735	28.0%	1,358	13.9%
Allegany	173	22	12.7%	82	47.4%	3	1.7%	2	1.2%	1	0.6%	36	20.8%	27	15.6%
Anne Arundel	1,093	137	12.5%	441	40.3%	44	4.0%	11	1.0%	1	0.1%	243	22.2%	216	19.8%
Baltimore City	1,782	327	18.4%	340	19.1%	74	4.2%	9	0.5%	8	0.4%	535	30.0%	489	27.4%
Baltimore	1,226	97	7.9%	593	48.4%	32	2.6%	0	0.0%	1	0.1%	394	32.1%	109	8.9%
Calvert	190	47	24.7%	59	31.1%	1	0.5%	5	2.6%	0	0.0%	39	20.5%	39	20.5%
Caroline	72	12	16.7%	27	37.5%	1	1.4%	23	31.9%	0	0.0%	0	0.0%	9	12.5%
Carroll	258	39	15.1%	178	69.0%	15	5.8%	0	0.0%	1	0.4%	10	3.9%	15	5.8%
Cecil	220	32	14.5%	55	25.0%	18	8.2%	5	2.3%	2	0.9%	64	29.1%	44	20.0%
Charles	316	77	24.4%	89	28.2%	19	6.0%	2	0.6%	0	0.0%	82	25.9%	47	14.9%
Dorchester	56	9	16.1%	12	21.4%	7	12.5%	0	0.0%	0	0.0%	10	17.9%	18	32.1%
Frederick	336	49	14.6%	193	57.4%	15	4.5%	0	0.0%	1	0.3%	64	19.0%	14	4.2%
Garrett	75	12	16.0%	26	34.7%	3	4.0%	22	29.3%	0	0.0%	0	0.0%	12	16.0%
Harford	349	53	15.2%	187	53.6%	16	4.6%	3	0.9%	1	0.3%	46	13.2%	43	12.3%
Howard	455	47	10.3%	219	48.1%	16	3.5%	4	0.9%	1	0.2%	129	28.4%	39	8.6%
Kent	36	1	2.8%	15	41.7%	1	2.8%	0	0.0%	0	0.0%	14	38.9%	5	13.9%
Montgomery	1,340	221	16.5%	687	51.3%	81	6.0%	5	0.4%	6	0.4%	311	23.2%	29	2.2%
Prince George's	597	41	6.9%	215	36.0%	29	4.9%	1	0.2%	1	0.2%	221	37.0%	89	14.9%
Queen Anne's	87	4	4.6%	34	39.1%	3	3.4%	0	0.0%	0	0.0%	35	40.2%	11	12.6%
St. Mary's	202	16	7.9%	94	46.5%	7	3.5%	1	0.5%	0	0.0%	53	26.2%	31	15.3%
Somerset	20	3	15.0%	4	20.0%	0	0.0%	0	0.0%	0	0.0%	10	50.0%	3	15.0%
Talbot	63	4	6.3%	12	19.0%	8	12.7%	1	1.6%	0	0.0%	26	41.3%	12	19.0%
Washington	210	55	26.2%	118	56.2%	24	11.4%	1	0.5%	0	0.0%	4	1.9%	8	3.8%
Wicomico	118	8	6.8%	18	15.3%	3	2.5%	1	0.8%	1	0.8%	55	46.6%	32	27.1%
Worcester	100	9	9.0%	40	40.0%	2	2.0%	3	3.0%	0	0.0%	32	32.0%	14	14.0%
LEA TOTAL	9,374	1,322	14.1%	3,738	39.9%	422	4.5%	99	1.1%	25	0.3%	2,413	25.7%	1,355	14.5%
Adult Corrections	49	1	2.0%	1	2.0%	0	0.0%	6	12.2%	0	0.0%	40	81.6%	1	2.0%
DJJ	281	3	1.1%	8	2.8%	0	0.0%	0	0.0%	0	0.0%	270	96.1%	0	0.0%
MSB	14	0	0.0%	0	0.0%	13	92.9%	0	0.0%	1	7.1%	0	0.0%	0	0.0%
MSD	47	0	0.0%	33	70.2%	0	0.0%	0	0.0%	0	0.0%	12	25.5%	2	4.3%
SOP TOTAL	391	4	1.0%	42	10.7%	13	3.3%	6	1.5%	1	0.3%	322	82.4%	3	0.8%

Figure 6
Students with Disabilities
by Exit Reason
July 2001-June 2002

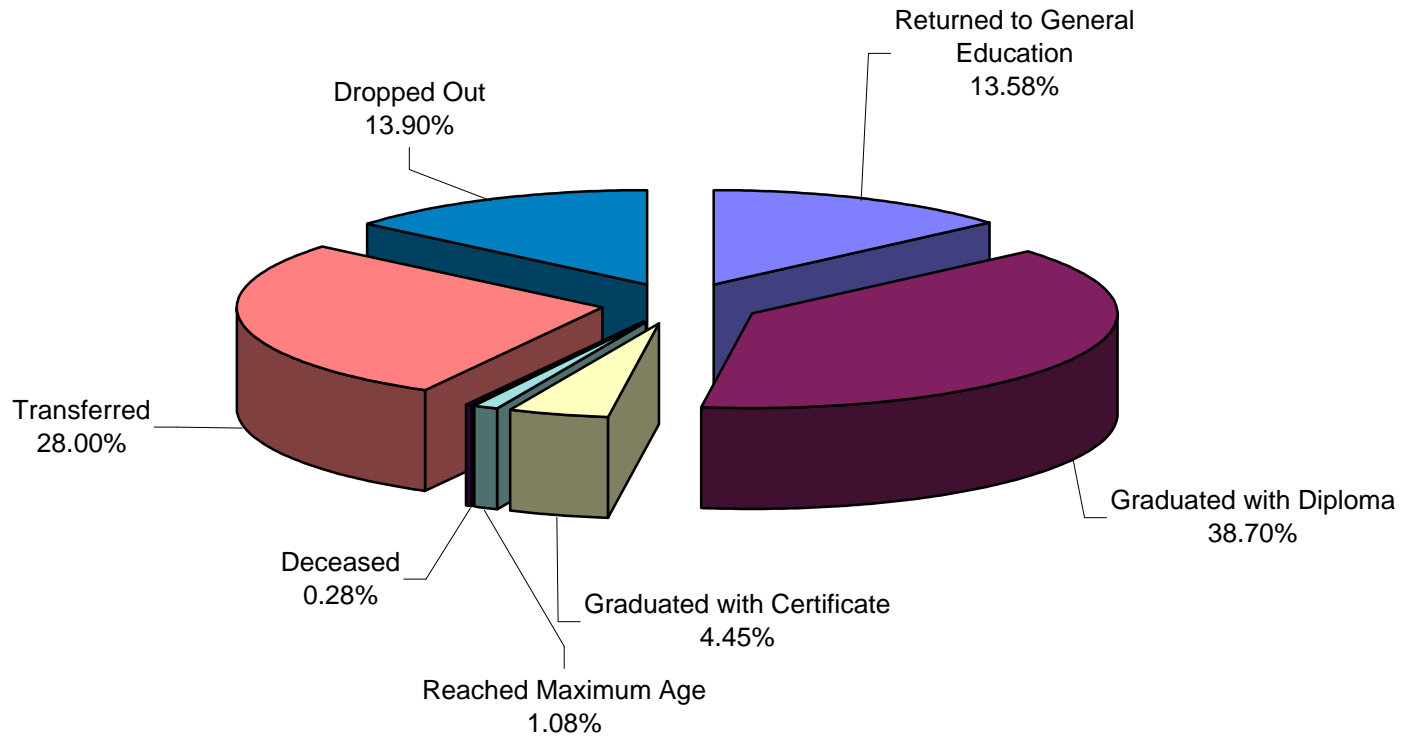


Table 20
 Students with Disabilities by Exit Reason and Disability
 Ages 14 - 21
 July 2001 - June 2002

	Total	Returned to General Ed		Graduated				Reached Maximum Age		Deceased		Transferred		Dropped Out	
		Number	Percent	with Diploma		with Certificate		Number	Percent	Number	Percent	Number	Percent	Number	Percent
				Number	Percent	Number	Percent								
State Total	9,765	1,326	13.58%	3,780	38.71%	435	4.45%	60	0.61%	26	0.27%	2,780	28.47%	1,358	13.91%
Mentally Retarded	643	9	1.40%	143	22.24%	170	26.44%	23	3.58%	4	0.62%	183	28.46%	111	17.26%
Hearing Impaired	50	9	18.00%	30	60.00%	1	2.00%	1	2.00%	0	0.00%	6	12.00%	3	6.00%
Deaf	73	1	1.37%	48	65.75%	4	5.48%	0	0.00%	0	0.00%	16	21.92%	4	5.48%
Speech/Language	678	243	35.84%	259	38.20%	4	0.59%	0	0.00%	0	0.00%	131	19.32%	41	6.05%
Visually Impaired	58	4	6.90%	26	44.83%	14	24.14%	0	0.00%	1	1.72%	11	18.97%	2	3.45%
Emotionally Disturbed	1,657	132	7.97%	411	24.80%	28	1.69%	1	0.06%	5	0.30%	759	45.81%	321	19.37%
Orthopedically Impaired	39	5	12.82%	19	48.72%	7	17.95%	0	0.00%	0	0.00%	6	15.38%	2	5.13%
Other Health Impaired	585	78	13.33%	247	42.22%	16	2.74%	1	0.17%	4	0.68%	172	29.40%	67	11.45%
Specific Learning Disability	5,425	827	15.24%	2,389	44.04%	87	1.60%	8	0.15%	8	0.15%	1,352	24.92%	754	13.90%
Deaf/Blind	2	0	0.00%	1	50.00%	1	50.00%	0	0.00%	0	0.00%	0	0.00%	0	0.00%
Multiple Handicap	409	15	3.67%	138	33.74%	74	18.09%	17	4.16%	4	0.98%	117	28.61%	44	10.76%
Autism	58	2	3.45%	34	58.62%	7	12.07%	0	0.00%	0	0.00%	9	15.52%	6	10.34%
Traumatic Brain Injury	88	1	1.14%	35	39.77%	22	25.00%	9	10.23%	0	0.00%	18	20.45%	3	3.41%
Developmental Delay	0	0	0.00%	0	0.00%	0	0.00%	0	0.00%	0	0.00%	0	0.00%	0	0.00%

Maryland Students with Disabilities Suspension Data

Table 21
 Extended Suspensions: Number and Percentage of Suspensions
 Maryland Public Schools
 2001-02

	Number and Percentage of All Students Suspended			Number and Percentage of Students with Disabilities Suspended			Number and Percentage of Non-disabled Students Suspended		
	Total 9/30/2001 Enrollment	Suspended for More Than 10 Days	Percent	12/1/2001 SSIS Count*	Suspended for More Than 10 Days	Percent	Total	Suspended for More Than 10 Days	Percent
Total State	860,640	3,200	0.37%	111,551	584	0.52%	749,089	2,620	0.35%
Allegany	10,180	6	0.06%	1,892	0	0.00%	8,288	6	0.07%
Anne Arundel	75,081	205	0.27%	10,448	51	0.49%	64,633	154	0.24%
Baltimore City	95,475	36	0.04%	16,157	11	0.07%	79,318	25	0.03%
Edison Schools	2,342	1	0.04%	226	1	0.44%	2,116	0	0.00%
Baltimore	107,212	1,059	0.99%	13,313	136	1.02%	93,899	923	0.98%
Calvert	16,651	5	0.03%	2,183	0	0.00%	14,468	5	0.03%
Caroline	5,609	0	0.00%	714	0	0.00%	4,895	0	0.00%
Carroll	28,127	1	0.00%	3,732	0	0.00%	24,395	1	0.00%
Cecil	16,095	57	0.35%	2,606	0	0.00%	13,489	57	0.42%
Charles	24,001	39	0.16%	2,577	9	0.35%	21,424	30	0.14%
Dorchester	4,884	16	0.33%	642	3	0.47%	4,242	13	0.31%
Frederick	38,022	41	0.11%	4,537	15	0.33%	33,485	26	0.08%
Garrett	4,869	2	0.04%	743	1	0.13%	4,126	1	0.02%
Harford	39,966	359	0.90%	5,803	104	1.79%	34,163	259	0.76%
Howard	46,257	117	0.25%	4,830	23	0.48%	41,427	94	0.23%
Kent	2,684	0	0.00%	336	0	0.00%	2,348	0	0.00%
Montgomery	136,895	230	0.17%	16,471	37	0.22%	120,424	193	0.16%
Prince George's	135,039	927	0.69%	14,853	169	1.14%	120,186	758	0.63%
Queen Anne's	7,232	8	0.11%	1,026	0	0.00%	6,206	8	0.13%
St. Mary's	15,482	2	0.01%	2,121	1	0.05%	13,361	1	0.01%
Somerset	3,060	1	0.03%	375	0	0.00%	2,685	1	0.04%
Talbot	4,516	11	0.24%	474	7	1.48%	4,042	4	0.10%
Washington	19,961	77	0.39%	2,925	16	0.55%	17,036	61	0.36%
Wicomico	14,116	0	0.00%	1,679	0	0.00%	12,437	0	0.00%
Worcester	6,884	0	0.00%	888	0	0.00%	5,996	0	0.00%

Table 22
Multiple Suspensions - Summing to Greater than Ten Days
Maryland Public Schools
2001-02

	Number and Percentage of All Students Suspended			Number and Percentage of Students with Disabilities Suspended			Number and Percentage of Non-disabled Students Suspended		
	Total Suspended for 9/30/2001 Enrollment	More Than 10 Days	Percent	12/1/2001 SSIS Count*	Suspended for More Than 10 Days	Percent	Total Suspended for	More Than 10 Days	Percent
Total State	860,640	6,483	0.75%	111,551	1,538	1.38%	749,089	4,901	0.65%
Allegany	10,180	59	0.58%	1,892	11	0.58%	8,288	48	0.58%
Anne Arundel	75,081	454	0.60%	10,448	95	0.91%	64,633	359	0.56%
Baltimore City	95,475	1,282	1.34%	16,157	403	2.49%	79,318	857	1.08%
Edison Schools	2,342	1	0.04%	226	0	0.00%	2,116	1	0.05%
Baltimore	107,212	531	0.50%	13,313	86	0.65%	93,899	445	0.47%
Calvert	16,651	124	0.74%	2,183	23	1.05%	14,468	101	0.70%
Caroline	5,609	154	2.75%	714	60	8.40%	4,895	94	1.92%
Carroll	28,127	104	0.37%	3,732	28	0.75%	24,395	75	0.31%
Cecil	16,095	230	1.43%	2,606	1	0.04%	13,489	226	1.68%
Charles	24,001	181	0.75%	2,577	43	1.67%	21,424	138	0.64%
Dorchester	4,884	130	2.66%	642	33	5.14%	4,242	97	2.29%
Frederick	38,022	292	0.77%	4,537	76	1.68%	33,485	216	0.65%
Garrett	4,869	8	0.16%	743	2	0.27%	4,126	6	0.15%
Harford	39,966	556	1.39%	5,803	183	3.15%	34,163	365	1.07%
Howard	46,257	97	0.21%	4,830	12	0.25%	41,427	84	0.20%
Kent	2,684	30	1.12%	336	4	1.19%	2,348	26	1.11%
Montgomery	136,895	354	0.26%	16,471	108	0.66%	120,424	238	0.20%
Prince George's	135,039	1,151	0.85%	14,853	248	1.67%	120,186	903	0.75%
Queen Anne's	7,232	28	0.39%	1,026	7	0.68%	6,206	21	0.34%
St. Mary's	15,482	177	1.14%	2,121	29	1.37%	13,361	148	1.11%
Somerset	3,060	110	3.59%	375	11	2.93%	2,685	98	3.65%
Talbot	4,516	29	0.64%	474	7	1.48%	4,042	22	0.54%
Washington	19,961	27	0.14%	2,925	2	0.07%	17,036	25	0.15%
Wicomico	14,116	326	2.31%	1,679	53	3.16%	12,437	273	2.20%
Worcester	6,884	48	0.70%	888	13	1.46%	5,996	35	0.58%

*Source: Maryland Special Education Census Data, December 1, 2001, Table 1

NOTE: Students who were disabled at the time of one suspension but not at the time of another suspension may be included in the all student column but may not be included in the disabled and/or non-disabled columns.

MARYLAND INFANTS AND TODDLERS PROGRAM
PART C DATA
as of 12/1/2002

Table 23
Part C Child Report
as of 12/1/02

Jurisdiction	Total # of Children Receiving Early Intervention Services as of 12/1/02				Total # of Children Receiving Early Intervention Services Annually	Total # of Children Referred to Local Infants & Toddlers Programs Annually
	Birth to One	One to Two	Two to Three	Total Snapshot (as of 12/1/01)	Annual Count (from 12/1/01 to 12/1/02)	Referral Count (from 12/1/01 to 12/1/02)
Total State	752	1,685	3,081	5,518	9,182	9,075
Allegany	18	35	34	87	135	147
Anne Arundel	39	113	320	472	864	809
Baltimore City	159	313	394	866	1,314	1,170
Baltimore	74	225	526	825	1,346	1,606
Calvert	1	22	43	66	103	87
Caroline	2	3	13	18	46	20
Carroll	38	37	65	140	228	298
Cecil	6	16	29	51	98	115
Charles	18	31	34	83	152	153
Dorchester	15	11	15	41	67	53
Frederick	26	51	119	196	340	320
Garrett	4	6	13	23	23	13
Harford	39	75	161	275	511	479
Howard	29	87	153	269	499	593
Kent	0	2	2	4	10	17
Montgomery	110	329	591	1030	1,677	1,494
Prince George's	80	208	357	645	1104	986
Queen Anne's	10	11	25	46	61	97
Somerset	1	1	7	9	9	28
St. Mary's	25	34	55	114	160	140
Talbot	5	12	19	36	50	78
Washington	38	30	57	125	202	199
Wicomico	13	29	39	81	147	108
Worcester	2	4	10	16	36	65

Figure 7
Part C Eligibility for 12/1/02

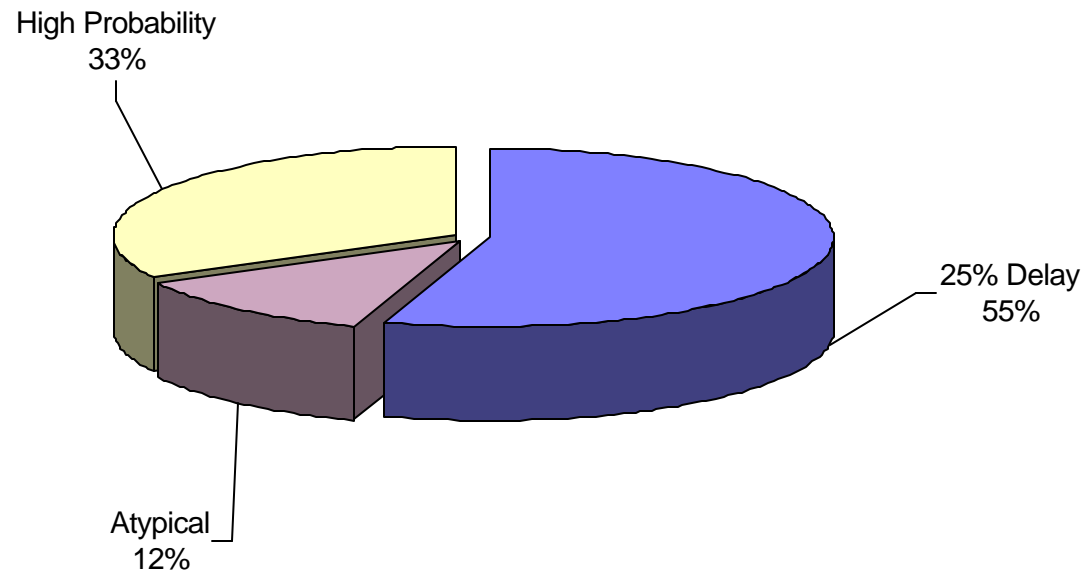


Table 24
Transition in Maryland
Based on 12/1/02 Part C Data Collection

Jurisdiction	All Children who Transitioned at age 3	With IEP Meeting Date Entered	Part B Eligible	With IEP Meeting Date Entered	Part B Eligible with Referrals	Not Part B Eligible	With IEP Meeting Date Entered	Not Part B Eligible with Referrals	Part B Eligibility Not Determined
Allegany County	47	39	30	30	21	9	9	1	8
Anne Arundel County	258	258	256	256	18	2	2	0	0
Baltimore City	413	352	279	279	103	73	73	52	61
Baltimore County	437	271	248	248	118	23	23	17	166
Calvert County	34	34	30	30	30	4	4	4	0
Caroline County	22	15	15	15	10	0	0	0	7
Carroll County	58	35	32	32	20	3	3	3	23
Cecil County	43	37	35	35	24	2	2	0	6
Charles County	60	48	47	47	2	1	1	0	12
Dorchester County	18	18	16	16	11	2	2	2	0
Frederick County	100	78	45	45	29	33	33	8	22
Garrett County	0	0	0	0	0	0	0	0	0
Harford County	140	140	128	128	46	12	12	10	0
Howard County	167	158	156	156	56	2	2	2	9
Kent County	3	2	2	2	2	0	0	0	1
Montgomery County	552	542	466	466	108	76	76	19	10
Prince George's County	354	227	224	224	217	3	3	3	127
Queen Anne's County	25	20	19	19	13	1	1	0	5
Somerset County	2	2	2	2	1	0	0	0	0
St. Mary's County	41	37	32	32	7	5	5	3	4
Talbot County	8	8	8	8	8	0	0	0	0
Washington County	50	50	46	46	45	4	4	3	0
Wicomico County	40	38	32	32	32	6	6	6	2
Worcester County	18	18	18	18	18	0	0	0	0
Statewide Total	2,890	2,427	2,166	2,166	939	261	261	133	463
Percent of Total		84%	75%	100%	43%	9%	100%	51%	16%